

H. A. ROWLAND § Kansas Licensed Civil Engineer

Member:

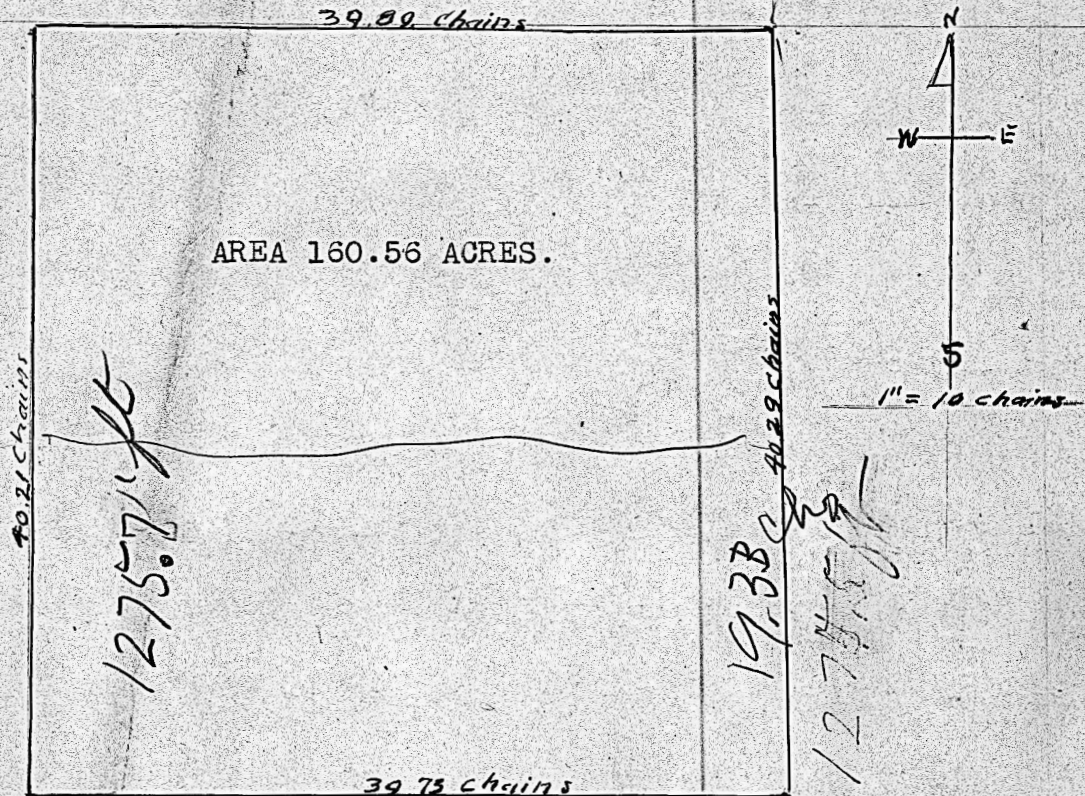
National Society Professional Engineers
Kansas Society Professional Engineers
Kansas Engineering Society

PHONE 796X

McPHERSON, KANSAS

PLAT OF

NE $\frac{1}{4}$ OF SEC. 7--TWP. 19 S.--RANGE 4 WEST 6TH P. M.,
McPHERSON COUNTY, KANSAS.



STATE OF KANSAS,
McPherson County, ss.,

This is to Certify, That, I have made a survey of Section 7 in
Town 19 south, and of Range 4 West of the 6th P.M., and find that
the Northeast Quarter of the same contains 160.56 acres.

Dated at McPherson, Kansas, Sep. 27th 1947.

H. A. Rowland
Registered Civil Engineer.

MICROFILM