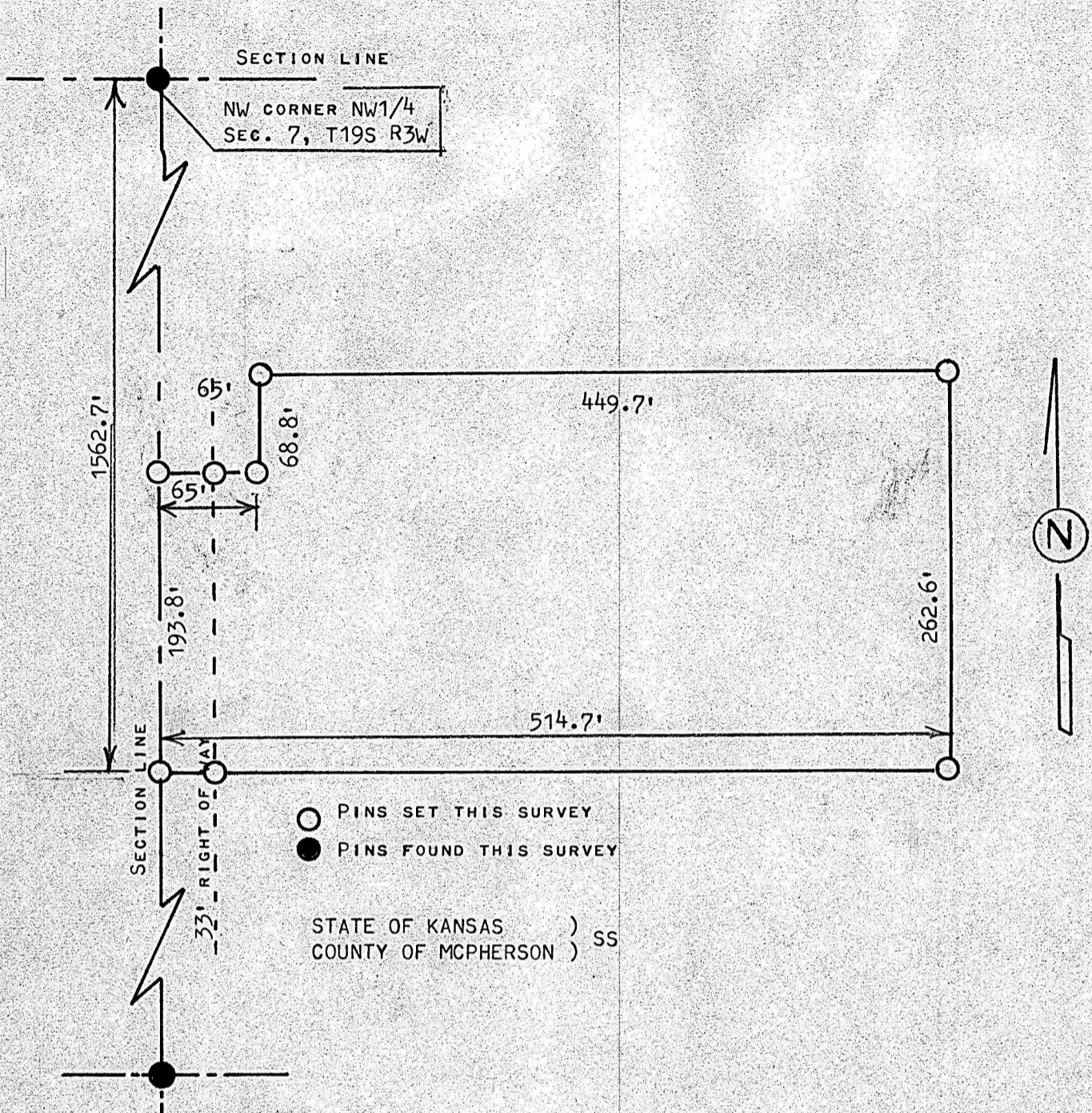


A SURVEY OF A TRACT OF LAND IN THE NW1/4
SECTION 7, T19S, R3W, MCPHERSON COUNTY, KANSAS



I, MELVIN FERGUSON, PROFESSIONAL ENGINEER OF THE STATE OF KANSAS DO HEREBY CERTIFY THAT UNDER MY SUPERVISION A SURVEY WAS MADE OF A TRACT OF LAND IN THE NW1/4, SECTION 7, T19S R3W OF THE 6TH P.M. AND DESCRIBED AS FOLLOWS;

BEGINNING 1562.7 FEET SOUTH OF THE NW CORNER OF SAID NW1/4, SECTION 7, T19S, R3W; THENCE RIGHT ANGLE EAST AND A DISTANCE OF 514.7 FEET; THENCE NORTH PARALLEL WITH SECTION LINE 262.6 FEET; THENCE WEST 449.7 FEET TO A POINT 65 FEET EAST OF SECTION LINE; THENCE SOUTH PARALLEL WITH SECTION LINE 68.8 FEET; THENCE WEST TO SECTION LINE 65 FEET; THENCE SOUTH ON SECTION LINE 193.8 FEET AND TO PLACE OF BEGINNING, SAID TRACT OF LAND CONTAINS 3.0 ACRES MORE OR LESS, AND THAT THE ABOVE PLAT IS A TRUE EXHIBIT OF SAID SURVEY AS FAR AS IT IS KNOWN TO ME.

SURVEY CALLED FOR BY ERNEST ADAMS

SIGNED THIS 29th DAY OF OCTOBER, 1980

Melvin Ferguson
MELVIN FERGUSON
PROFESSIONAL ENGINEER
MCPHERSON, KANSAS

