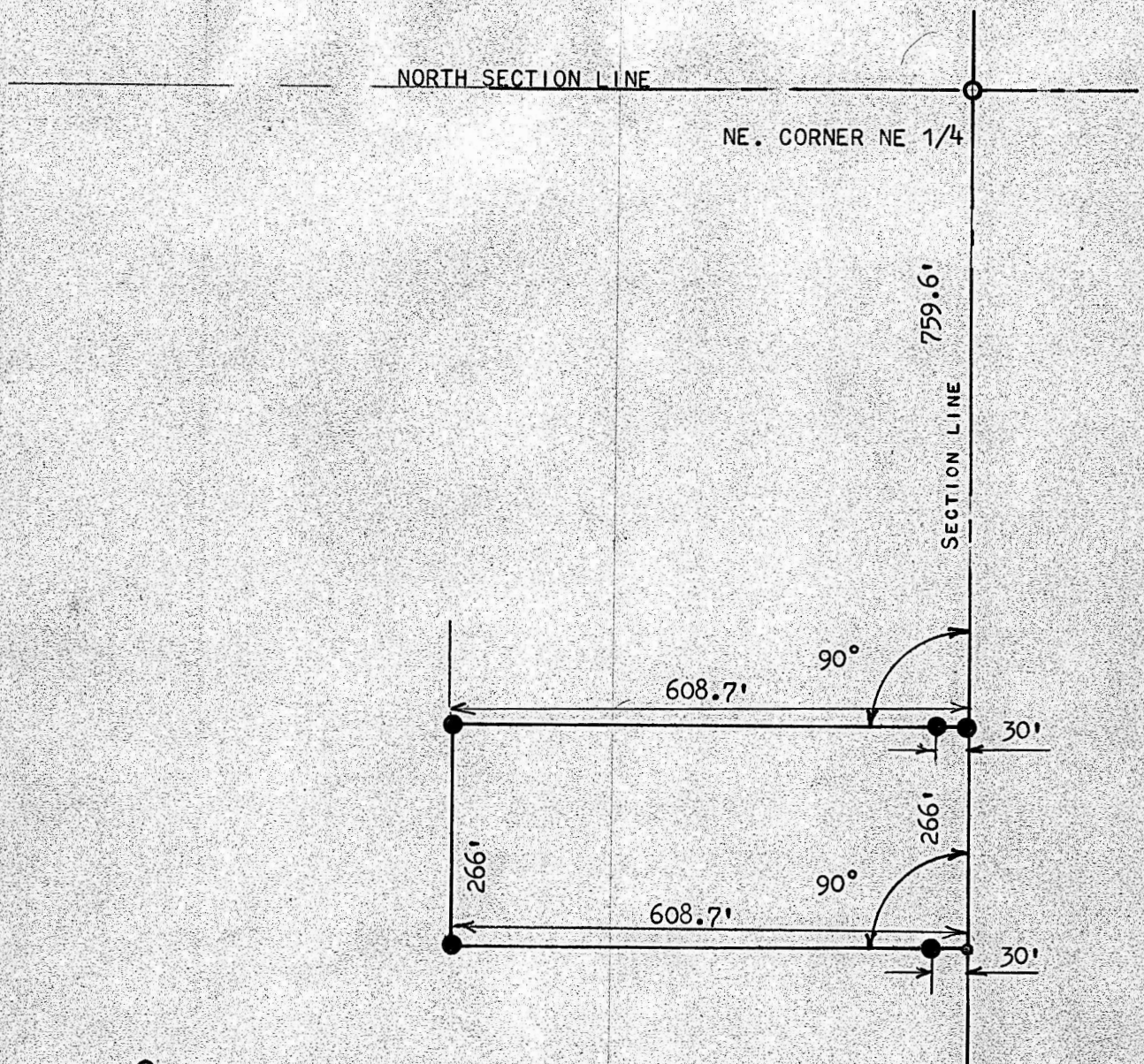


A SURVEY OF A TRACT OF LAND IN THE
NE 1/4, SECTION 7 T19S R3W OF THE 6TH P.M.
MC PHERSON COUNTY, KANSAS



- PINS FOUND THIS SURVEY
- PINS SET THIS SURVEY

STATE OF KANSAS)
COUNTY OF MC PHERSON) SS

I, FRANCIS RANKIN, PROFESSIONAL ENGINEER OF THE STATE OF KANSAS
DO HEREBY CERTIFY THAT UNDER MY SUPERVISION A SURVEY WAS MADE
IN THE NE 1/4, SECTION 7, T19S R3W OF THE 6TH P.M. AND DESCRIBED
AS FOLLOWS;

BEGINNING AT A POINT 759.6 FEET SOUTH OF THE NE CORNER OF SAID
NE 1/4, SECTION 7, T19S R3W; THENCE RIGHT ANGLE WEST 608.7 FEET;
THENCE SOUTH 266.0 FEET; THENCE EAST TO SECTION LINE 608.7 FEET;
THENCE NORTH ON SECTION LINE 266.0 FEET TO PLACE OF BEGINNING,
SAID TRACT OF LAND CONTAINS 3.72 ACRES MORE OR LESS, AND THAT THE
ACCOMPANYING PLAT IS A TRUE EXHIBIT OF SAID SURVEY AS FAR AS IT IS
KNOWN TO ME.

SURVEY CALLED FOR BY HILL

SIGNED THIS 23, MARCH, 1970

Francis Rankin
FRANCIS RANKIN
PROFESSIONAL ENGINEER
MC PHERSON, KANSAS
799
KANSAS
PROFESSIONAL ENGINEER

1100075-1