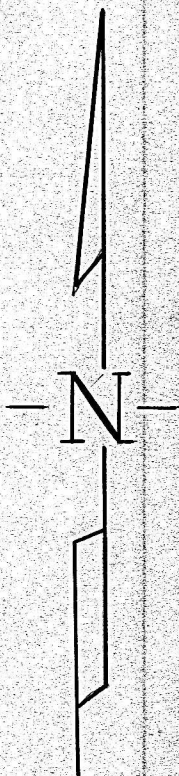
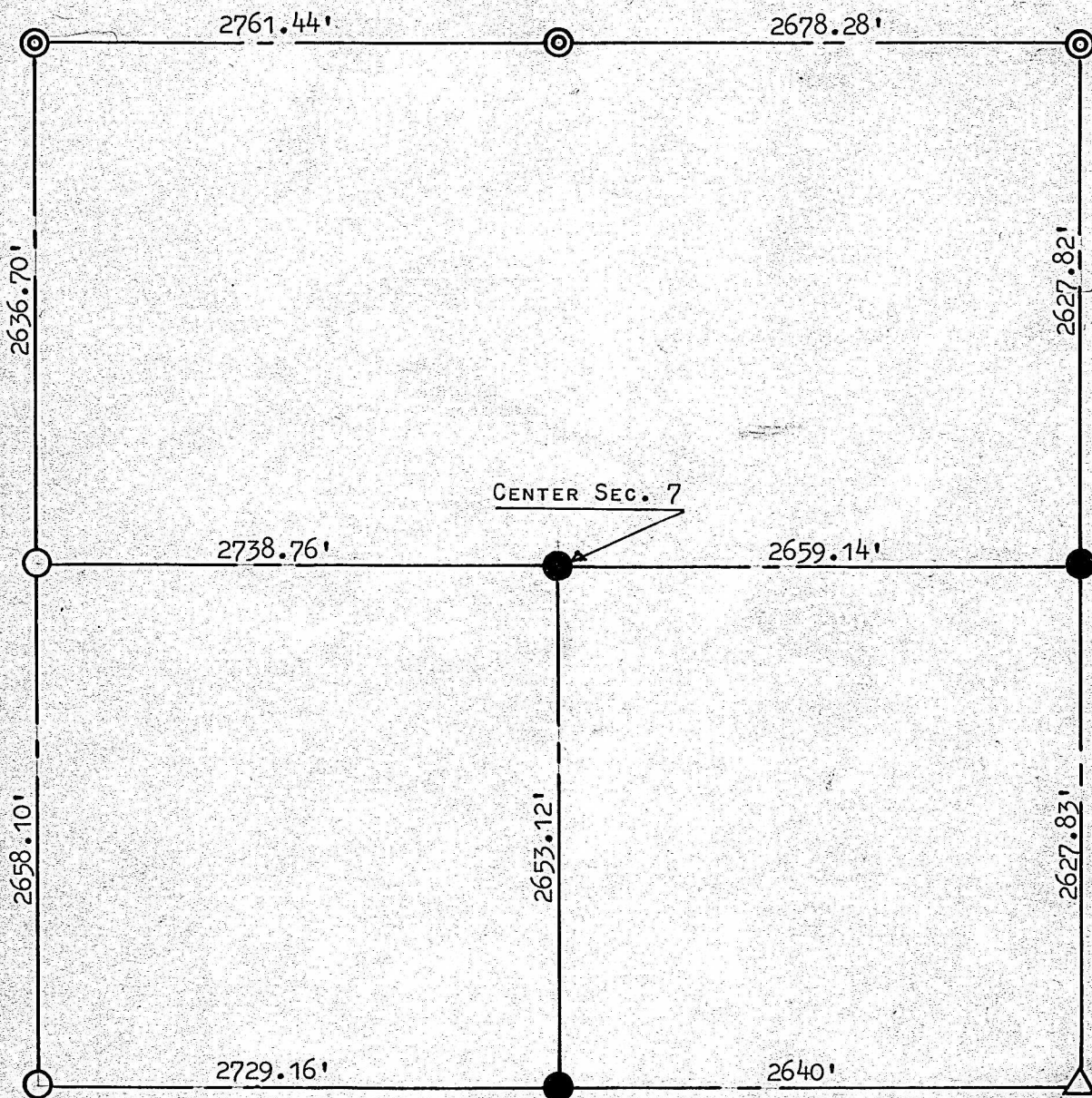
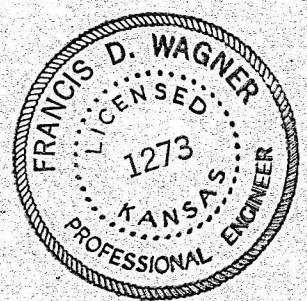


A SURVEY OF THE S¹/₂
SECTION 7, T18S, R4W 6TH P.M.



- ⊙ PINS SET U.S. GOV. SURVEY
- PINS FOUND THIS SURVEY
- PINS SET THIS SURVEY 3/4" PIPE
- △ STONE FOUND THIS SURVEY



STATE OF KANSAS) SS
COUNTY OF McPHERSON)

I, FRANCIS D. WAGNER, COUNTY ENGINEER OF McPHERSON COUNTY KANSAS,
DO HEREBY CERTIFY THAT I DID CAUSE TO BE DONE ON THE 22ND DAY
OF JULY 1960 A SURVEY OF THE S¹/₂ OF SECTION 7, T18S, R4W OF THE
6TH P.M. AND THAT THE ACCOMPANYING PLAT IS A TRUE EXHIBIT OF SAID
SURVEY.

Francis D. Wagner

FRANCIS D. WAGNER
COUNTY ENGINEER
McPHERSON COUNTY

15 AUGUST, 1960

~~UNRECORDED~~

MICROFILM