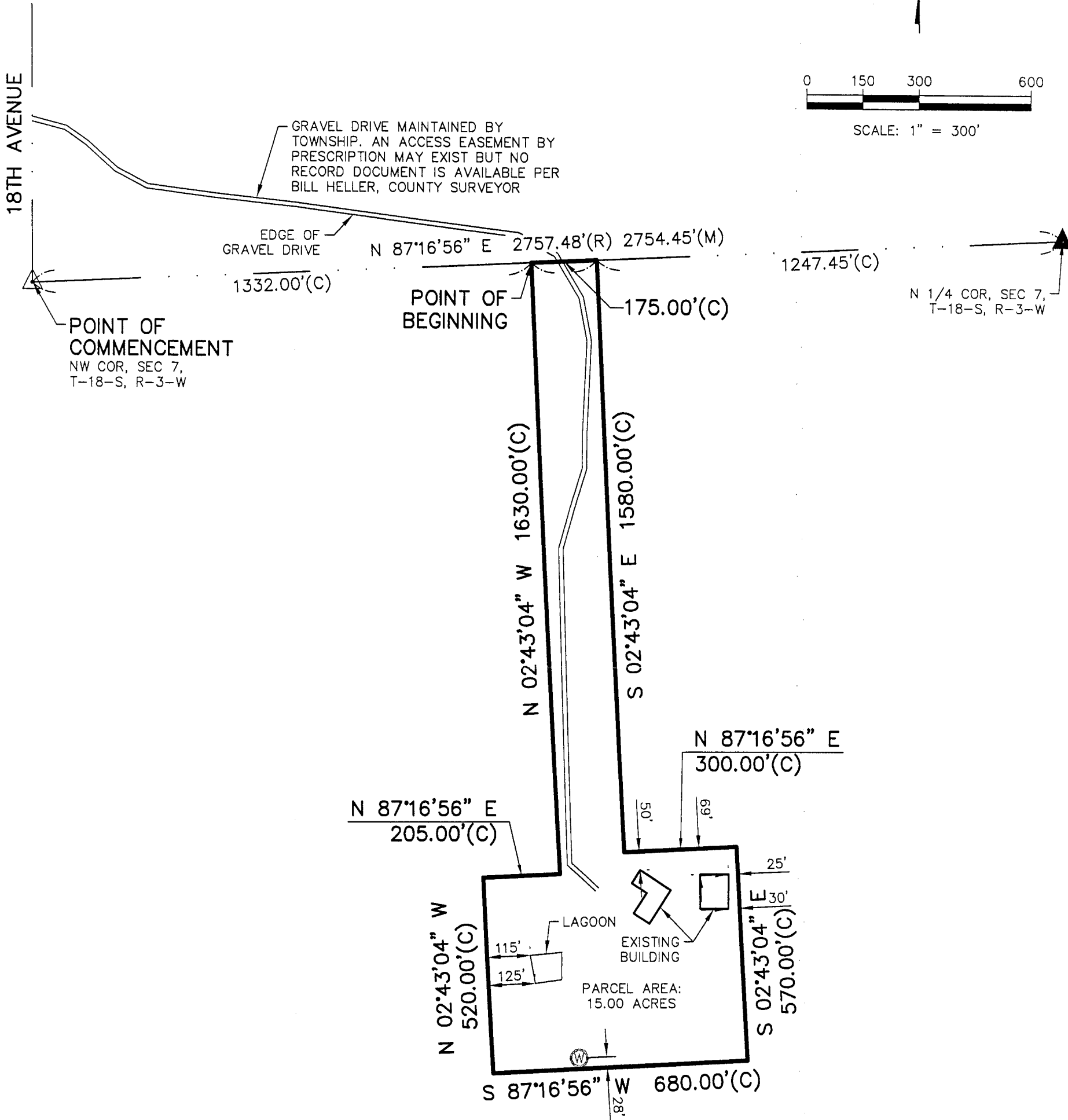
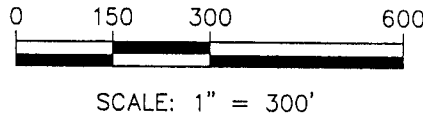



CERTIFICATE OF SURVEY

A PORTION OF THE NW 1/4, SEC 7, T-18-S, R-2-W  
MCPHERSON COUNTY, KANSAS



LEGEND

- SECTION CORNER FOUND, 5/8" REBAR W/ ILLEGIBLE YELLOW CAP
- SECTION CORNER SET, 1/2"x24" REBAR W/ "KVE CLS-20" CAP
- (R) RECORD DISTANCE PER A. BASS SURVEY, DATED: APRIL 23, 1886
- (M) MEASURED BEARING & DISTANCE
- (C) CALCULATED MEASUREMENT
- WELL

	742 DUVALL AVENUE SALINA, KANSAS 67401 PH. (785) 823-3400   FAX (785) 823-3411 sa@kveng.com   www.kveng.com	PROJECT NO. <b>E18S1954</b>
	<b>KAW VALLEY ENGINEERING</b>	DRAWN BY <b>TDA</b>
		CHECKED BY <b>WCD</b>
		CFN <b>1954CS</b>
		SHEET <b>2 OF 2</b>
PREPARED FOR: <b>DARIN PEARSON</b> 2308 18TH AVENUE LINDSBORG, KANSAS 67456	KAW VALLEY ENGINEERING, INC., IS AUTHORIZED TO OFFER SURVEYING SERVICES BY KANSAS STATE CERTIFICATE OF AUTHORIZATION NO. LS-20. EXPIRES 12/31/18	