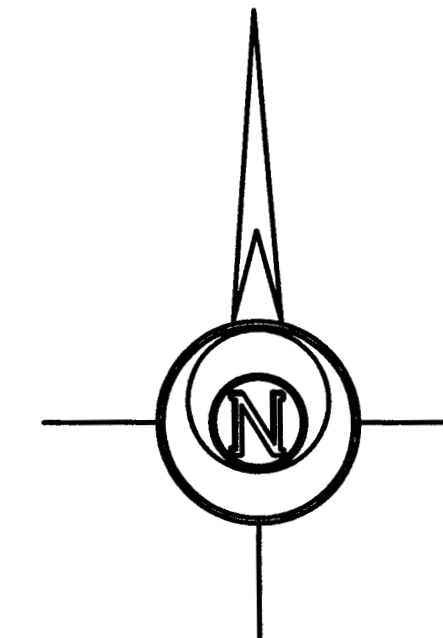
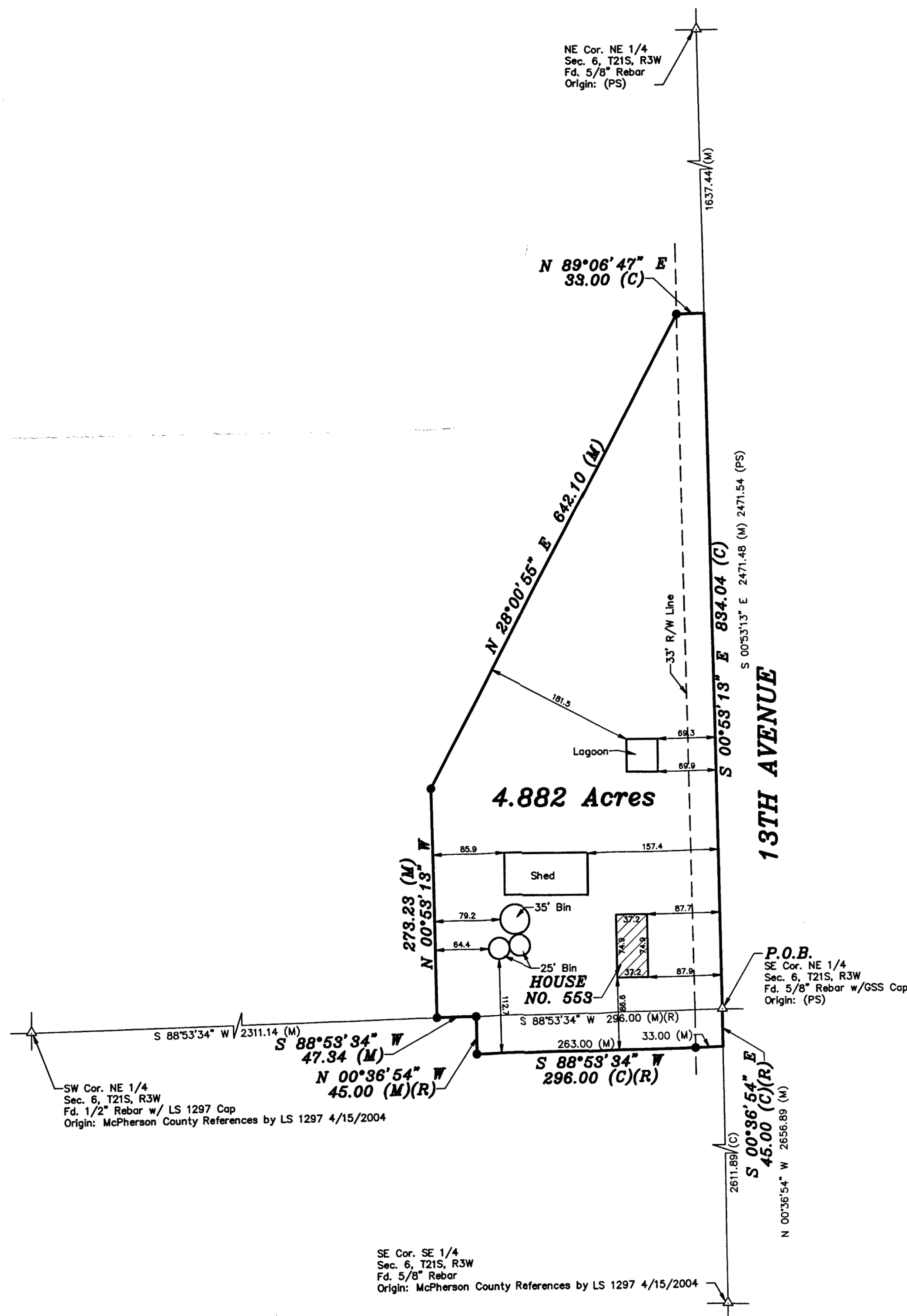


Copyright © 2018 Garber Surveying Service, P.A. Saved 11/12/2018 3:59:51 PM by KZOOK  
Plot Date & Time Monday, November 12, 2018 4:00:16 PM Dwg Path C:\DD\GSSFILES\2018\20180805M.dwg\20180805 NDS Auto S Ground



-100 0 100 200 300

BASIS OF BEARING = NAD 83 KANSAS SOUTH ZONE

#### LEGEND

- △ - Sectional Monument Found
- - 5/8" x 24" Iron Rebar Set w/G.S.S. Cap
- (C) - Calculated
- (M) - Measured
- (R) - Record measurement
- (PS) - Previous Survey GSS Project #G81-11
- P.O.B. - Point of Beginning

#### DESCRIPTION:

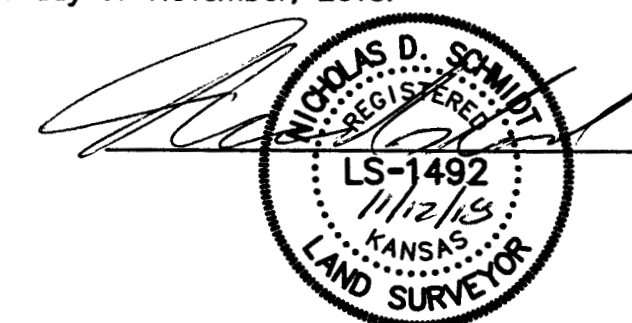
A portion of the Northeast Quarter and a portion of the Southeast Quarter of Section 6, Township 21 South, Range 3 West of the 6th Principal Meridian, McPherson County, Kansas described as follows:

Beginning at the Northeast corner of said Southeast Quarter; thence on a NAD 83 Kansas South Zone bearing of South 00°36'54" East on the East line of said Southeast Quarter a distance of 45.00 feet (Record); thence South 88°53'34" West parallel with the North line of said Southeast Quarter a distance of 296.00 feet (Record); thence North 00°36'54" West parallel with said East line a distance of 45.00 feet (Record) to said North line; thence South 88°53'34" West on said North line a distance of 47.34 feet; thence North 00°53'13" West parallel with the East line of said Northeast Quarter a distance of 273.23 feet; thence North 28°00'55" East a distance of 642.10 feet; thence North 89°06'47" East perpendicular to the East line of said Northeast Quarter a distance of 33.00 feet to said East line; thence South 00°53'13" East on said East line a distance of 834.04 feet to the point of beginning.

Containing 4.882 Acres and subject to a road right of easement across the East 33.00 feet thereof and any other easements or restrictions of record.

#### SURVEYOR'S CERTIFICATE:

I hereby certify this plat to be a true, correct and complete representation of the property described hereon, as surveyed under my supervision, this 12th day of November, 2018.



Prepared For:		Description:	
NORMAN ENSZ		A PORTION OF THE NE 1/4 & SE 1/4 SECTION 6, T21S, R3W MCPHERSON COUNTY, KANSAS	
Prepared By:		Garber Surveying Service, P.A.	
GSS		HUTCHINSON (Main Office) 2908 North Plum St. 67502 Ph. 620-665-7032 Fax 620-663-7401 McPHERSON (Branch Office) 115 East Marlin 67460 Ph. 620-241-4441 Fax 620-241-4458 NEWTON (Branch Office) 511 North Poplar St. 67114 Ph. 316-283-5053 Fax 316-283-5073	
Drawn By: KDZ	Scale: 1"=100'	Date of Field Work: October 29, 2018	Job No:
Checked By: NDS	Date: 11/12/2018	Sheet 1 of 1 Sheet(s)	G2018-805