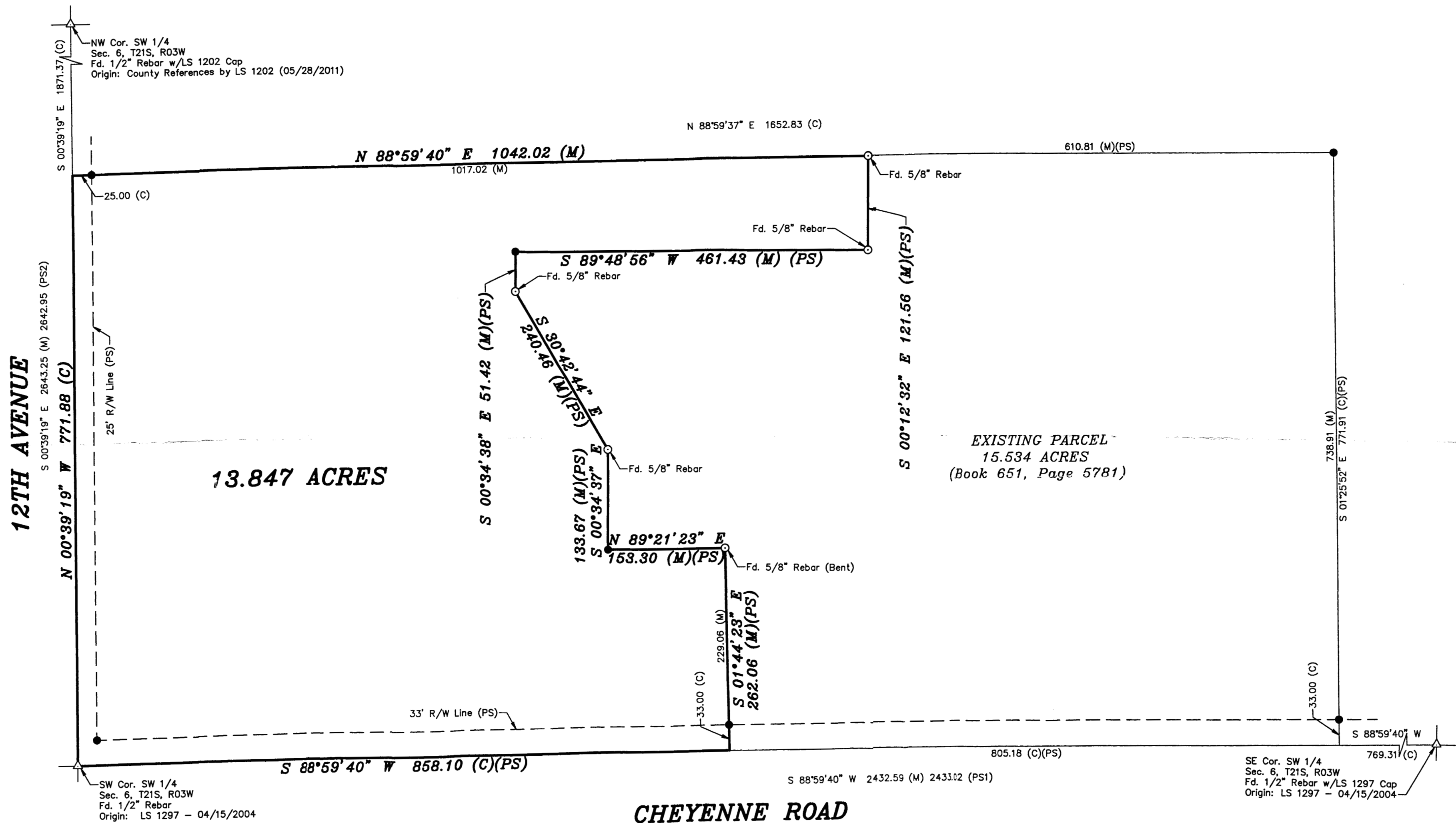


Saved 3/12/2018 10:06:12 AM by K200K  
Plot Date & Time Monday, March 12, 2018 10:06:32 AM Dwg Path C:\DD\GSSFILES\2018\20180116M.dwg\20180116 KWE Auto S Ground



#### DESCRIPTION:

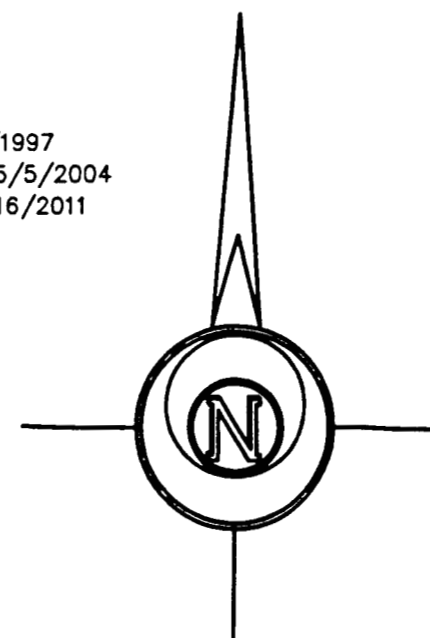
A portion of the Southwest Quarter of Section 6, Township 21 South, Range 3 West of the 6th Principal Meridian, McPherson County, Kansas described as follows:

Beginning at the Southwest corner of said Southwest Quarter; thence on a NAD 83 Kansas South Zone bearing of North 00°39'19" West on the West line of said Southwest Quarter a distance of 771.88 feet; thence North 88°59'40" East parallel with the South line of said Southwest Quarter a distance of 1042.02 to the Northwest corner of a parcel described in Book 651, Page 5781 at the McPherson County Register of Deeds Office; thence South 00°12'32" East on the West line of said parcel a distance of 121.56 feet; thence South 89°48'56" West on said West line a distance of 461.43 feet; thence South 00°34'38" East on said West line a distance of 51.42 feet; thence South 30°42'44" East on said West line a distance of 240.46 feet; thence South 00°34'37" East on said West line a distance of 133.67 feet; thence North 89°21'23" East on said West line a distance of 153.30 feet; thence South 01°44'23" East on said West line a distance of 262.06 feet to the South line of said Southwest Quarter; thence South 88°59'40" West on said South line a distance of 858.10 feet to the point of beginning.

Containing 13.847 Acres and subject to road right of way easements across the West 25.00 feet and South 33.00 feet thereof, and any other easements or restrictions of record.

#### LEGEND

- △ - Sectional Monument Found
- - Survey Monument Found
- - 5/8" x 24" Iron Rebar Set w/G.S.S. Cap
- (C) - Calculated
- (M) - Measured
- (PS) - Previous Survey by GSS Project #97-503, 8/29/1997
- (PS1) - Previous Survey by Melanie L. Thrower LS 1297, 5/5/2004
- (PS2) - Previous Survey by William B. Heller LS 1202, 5/16/2011



-100 0 100 200 300

BASIS OF BEARING = NAD 83 KANSAS SOUTH ZONE

#### SURVEYOR'S CERTIFICATE:

I hereby certify this plat to be a true, correct and complete representation of the property described hereon, as surveyed under my supervision, this 12th day of March, 2018.



Prepared For: <b>TIM NIKKEL</b>		Description: <b>A PORTION OF THE SW 1/4 SECTION 6, T21S, R03W MCPHERSON COUNTY, KANSAS</b>	
Prepared By: <b>GSS</b>		<b>Garber Surveying Service, P.A.</b>	
HUTCHINSON (Main Office) 2908 North Plum St. 67502 Ph. 620-665-7032 Fax 620-663-7401		McPHERSON (Branch Office) 115 East Marlin 67460 Ph. 620-241-4441 Fax 620-241-4458	
NEWTON (Branch Office) 511 North Poplar St. 67114 Ph. 316-283-5053 Fax 316-283-5073			
Drawn By: <b>KDZ</b>	Scale: <b>1"=100'</b>	Date of Field Work: <b>February 27, 2018</b>	Job No:
Checked By: <b>NDS</b>	Date: <b>03/12/2018</b>	Sheet <b>1 of 1</b> Sheet(s)	<b>G2018-116</b>