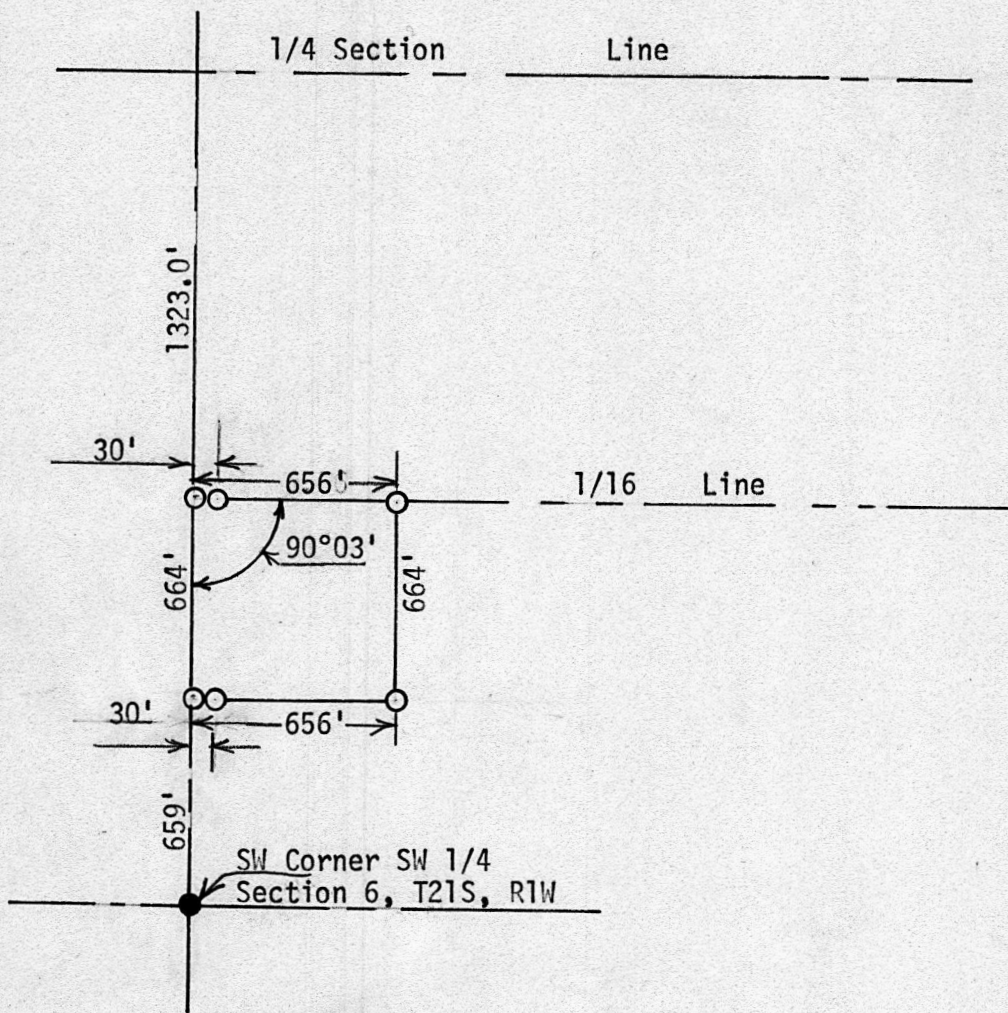


SURVEY OF A TRACT OF LAND IN THE  
S 1/2, SW 1/4, SECTION 6, T21S, R1W  
MC PHERSON COUNTY, KANSAS



- Pins Set This Survey
- Reference on corner

State of Kansas )  
County of McPherson ) S.S.

I, F. R. Rankin, County Engineer of McPherson County, Kansas, do hereby certify that under my supervision a survey was made in the S 1/2 SW 1/4 Section 6, T21S, R1W of the 6th P.M. and described as follows:

Beginning at the NW corner of said S1/2 SW 1/4 Section 6, T21S, R1W of the 6th P.M.; thence East on the 1/16th line 656 feet; thence South parallel with section line 664 feet; thence West to Section Line 656 feet; thence North 664 feet to place of beginning. The land herein described contains 10 acres more or less and the above plat is a true exhibit of said survey as far as it is known to me.

Survey requested by Mathilda Hoyer

Signed this 14 day of December, 1973

*F. R. Rankin*

F. R. Rankin, P. E.  
Administrator of P.W. & County Engr.  
McPherson County, Kansas



MICROFILM