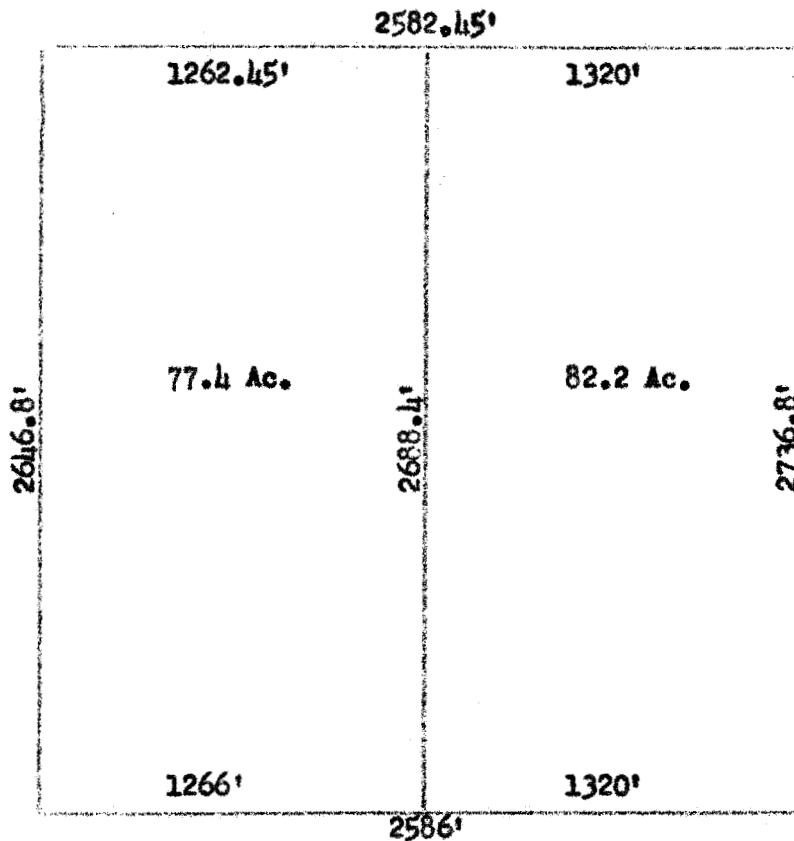


Sec 6

28th January, 1954



Survey in the
NW Quarter of
Section 6-18-3

State of Kansas, County of McPherson, ss

I, Francis D. Wagner, County Engineer of McPherson County, Kansas did cause to be done on the 28th day January 1954 a survey to determine the acreage in the NW 1/4 Section 6-18-3 etc.

FRANCIS D. WAGNER
County Engineer
McPherson County

MICROFILM