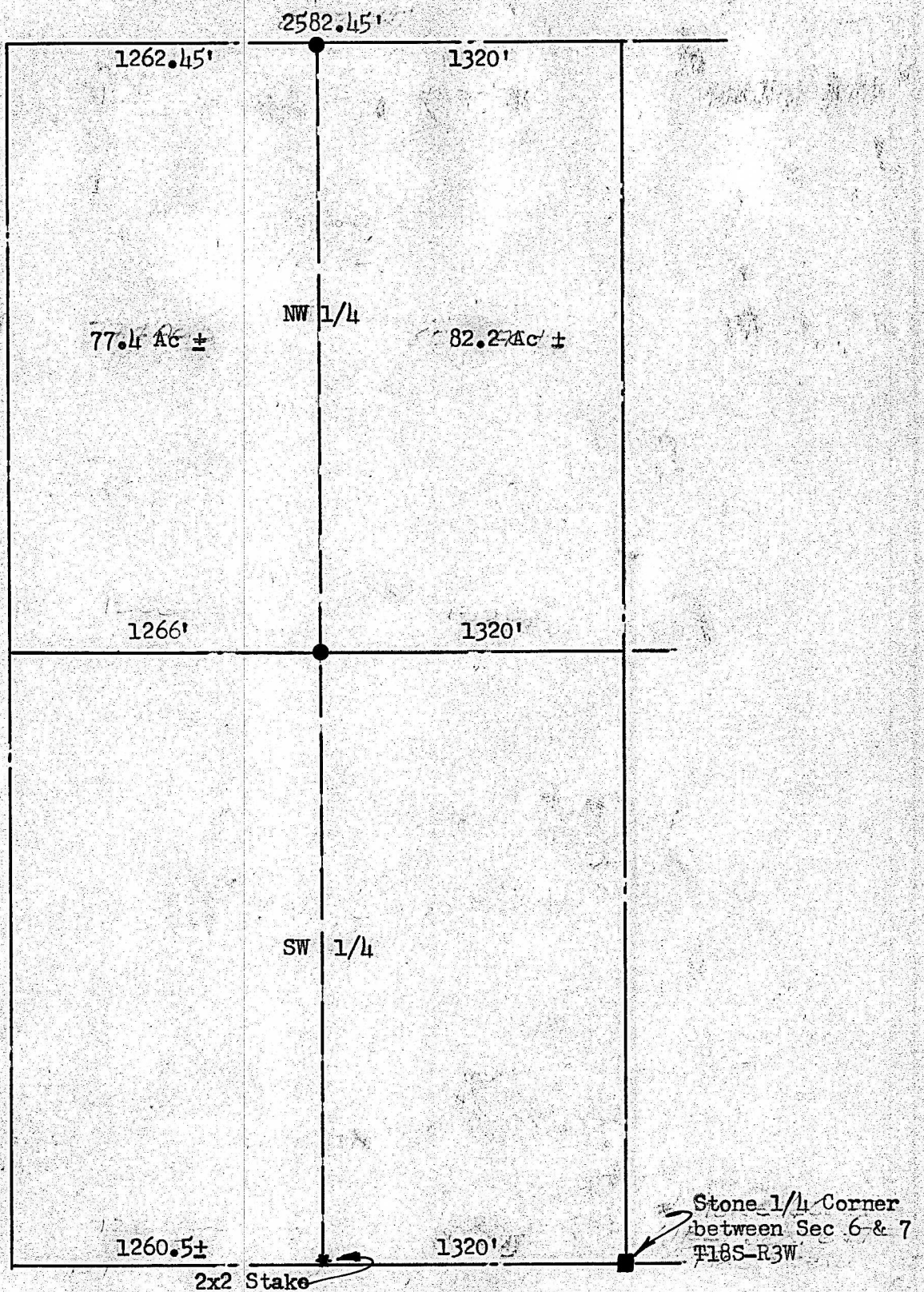
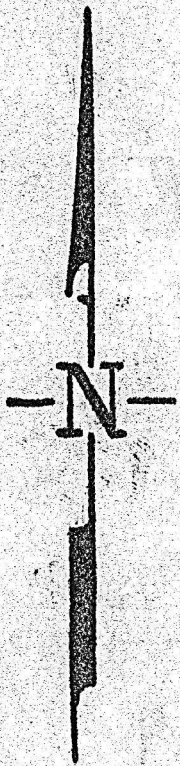


PROPERTY LINE SURVEY

E 1/2 SW 1/4 Sec 6-T 18 S-R 3 W



● Pin set on previous survey.

State of Kansas)
County of McPherson) SS

I, Francis D Wagner, County Engineer of McPherson County, Kansas, did cause to be done on the 7th day of April, 1955, a survey to determine the west line of the East 1/2 SW 1/4 Sec 6-T18S-R3W of the 6th PM of McPherson County, Kansas, and that the accompanying plat is a true exhibit of said survey.

7th April 1955

Francis D Wagner

Francis D Wagner
County Engineer
McPherson County

MICROFILM