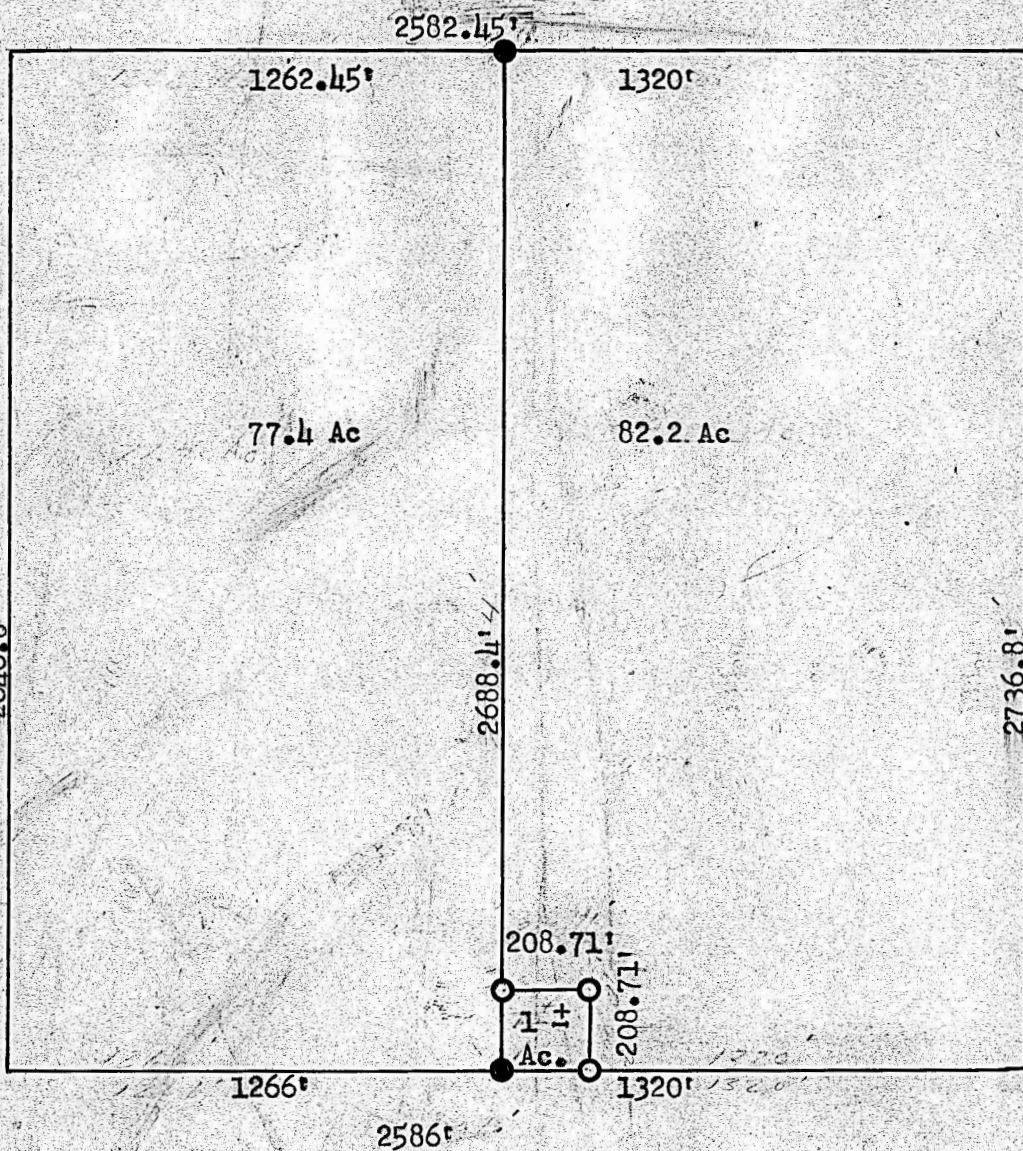


A SURVEY IN THE NW 1/4  
Sec. 6-18T-S, R 3 W



Center Section  
6-18-3

● Pins From Previous Survey

○ Pins Set On This Survey

County of McPherson) ss  
State of Kansas )

I, Francis D. Wagner, County Engineer of McPherson County, do hereby certify that I did Cause to be done on the 16th day of March 1955, a Survey of a one acre tract in NW 1/4 of Section 6-18-S, R 3 W of 6th PM. Described as follows:

Beginning at the center of Section 6-18-3, thence 1320' West along Quarter Section line between the NW 1/4 and SW 1/4 to place of beginning, thence East along said Quarter Section line 208.71', thence North 208.71', thence West 208.71', thence South 208.71' along West boundary line of 82.2 acre tract to place of beginning.

Tract of land contains 1 acre ± and that accompanying plat is a true exhibit of said survey.

*Francis D. Wagner*  
Francis D. Wagner  
County Engineer  
McPherson, County

MICROFILM



D.H.C.