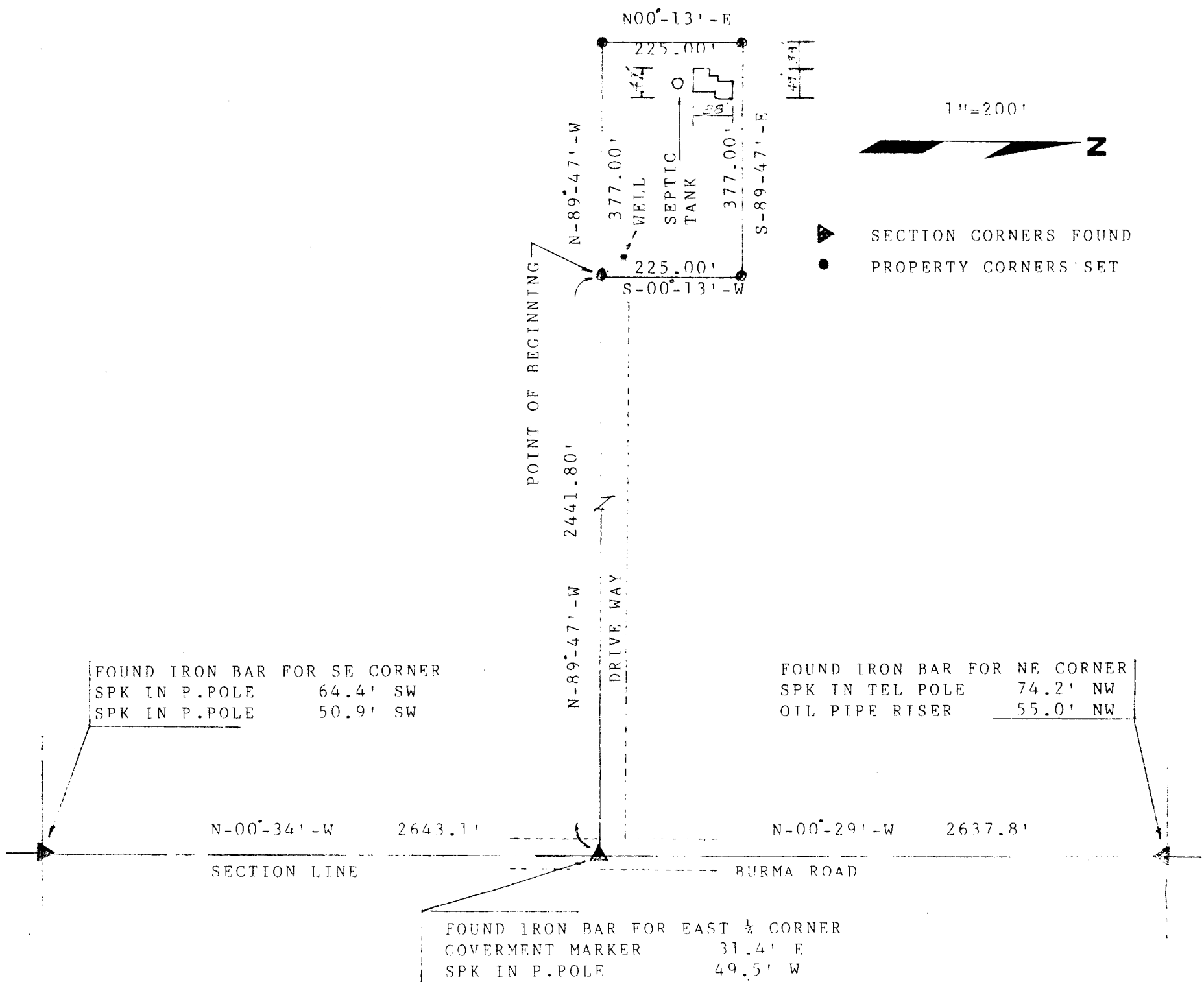


DEED CERTIFICATE



I HEREBY CERTIFY THIS TO BE THE PLAT OF A SURVEY PREFORMED BY ME OR UNDER MY DIRECTION OF A TRACT OF LAND IN THE NORTH HALF OF SECTION 6, TOWNSHIP 17 S, RANGE 3 WEST, OF THE 6TH P.M.. IN McPHERSON COUNTY, KANSAS, DESCRIBED AS FOLLOWS: BEGINNING AT A POINT 2441.80 FEET N-89°-47'-W OF THE SOUTHEAST CORNER OF THE NORTHEAST QUARTER OF SAID SECTION 6, THENCE N-89°-47'-W, A DISTANCE OF 377.00 FEET, THENCE N-00°-13'-E, A DISTANCE OF 225.00 FEET, THENCE S-89°-47'-E, A DISTANCE OF 377.00 FEET, THENCE S-00°-13'-W, A DISTANCE OF 225.00 FEET, TO THE POINT OF BEGINNING, CONTAINING 1.95 ACRES MORE OR LESS.

D. W. Bassett

SURVEYOR 12/6/89

D. W. BASSETT

1201 ALBANY ROAD

WICHITA, KANSAS 67401

(913) 813-6058

