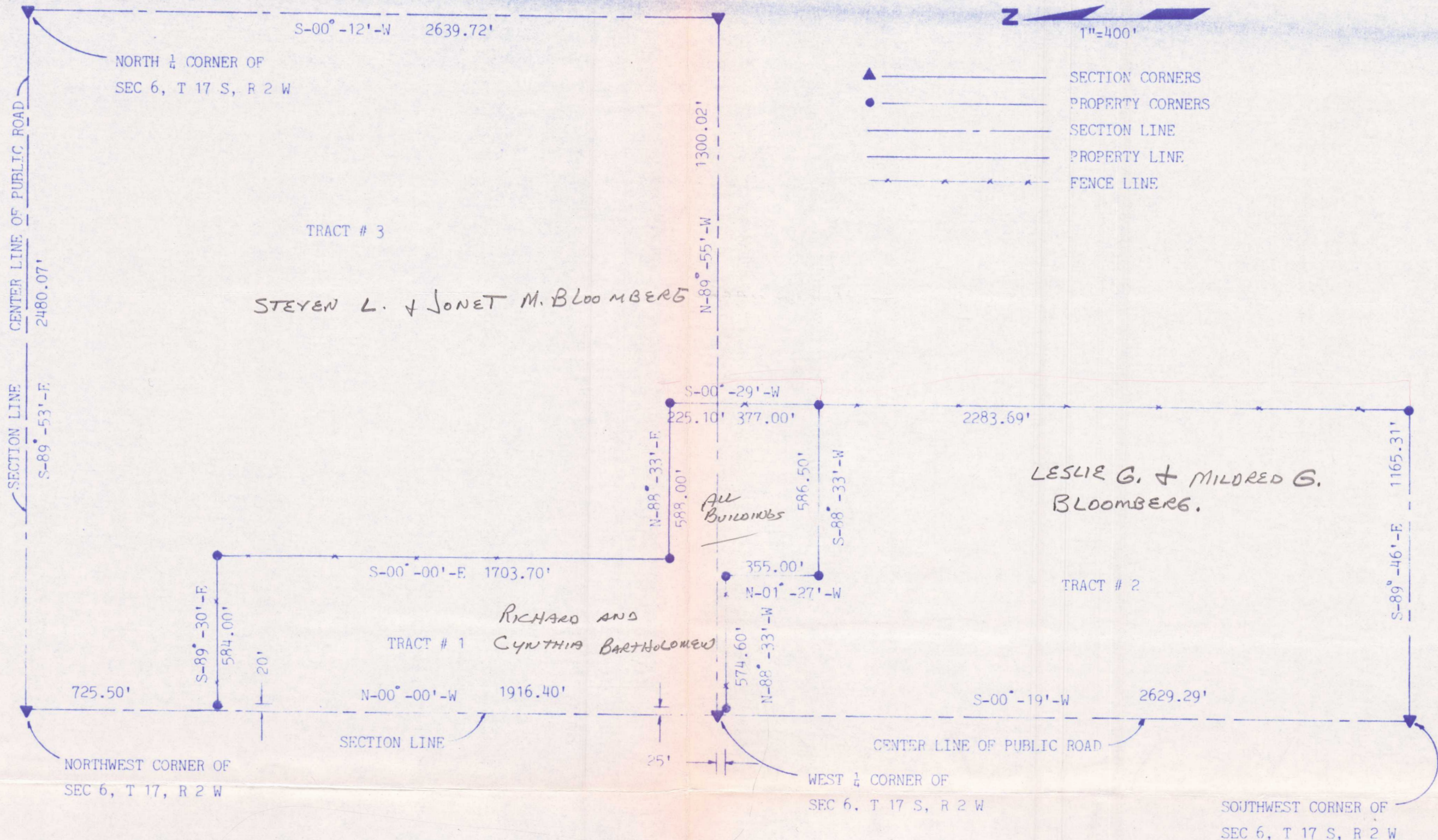


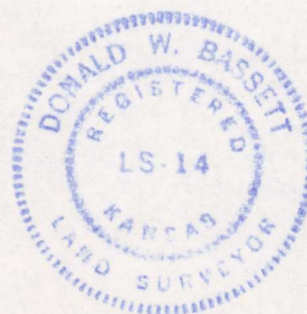
# SURVEYORS CERTIFICATE



TRACT # 1, SURVEY OF THAT PART OF THE WEST HALF OF SECTION 6, TOWNSHIP 17 SOUTH RANGE 2 WEST OF THE 6TH P.M. IN MC PHERSON COUNTY KANSAS, DESCRIBED AS FOLLOWS: BEGINNING AT A POINT ON THE WEST LINE OF SAID SECTION 6, WHICH POINT BEING 725.50 FEET SOUTH OF THE NORTHWEST CORNER OF SAID SECTION 6, THENCE S-89°-30'-E, A DISTANCE OF 584.00 FEET, THENCE S-00°-00'-E, A DISTANCE OF 1703.70 FEET, THENCE N-88°-33'-E, A DISTANCE OF 588.00 FEET, THENCE S-00°-29'-W, A DISTANCE OF 602.10 FEET, THENCE S-88°-33'-W, A DISTANCE OF 586.50 FEET, THENCE N-01°-27'-W, A DISTANCE OF 355.00 FEET, THENCE N-88°-33'-W, A DISTANCE OF 574.60 FEET, TO THE WEST LINE OF SAID SECTION 6, THENCE N-00°-19'-W, ALONG THE WEST LINE OF SAID SECTION 6, A DISTANCE OF 25.00 FEET, THENCE N-00°-00'-E, ALONG THE WEST LINE OF SAID SECTION 6, A DISTANCE OF 1916.40 FEET TO THE POINT OF BEGINNING, CONTAINING 33.5 ACRES MORE OR LESS.

TRACT # 2, SURVEY OF THAT PART OF THE WEST HALF OF SECTION 6, TOWNSHIP 17 SOUTH, RANGE 2 WEST OF THE 6TH P.M. IN MC PHERSON COUNTY KANSAS, DESCRIBED AS FOLLOWS: BEGINNING AT THE SOUTHWEST CORNER OF SAID SECTION 6, THENCE S-89°-46'-E, ALONG THE SOUTH LINE OF SAID SECTION 6, A DISTANCE OF 1165.31 FEET, THENCE N-00°-29'-E, A DISTANCE OF 2283.69 FEET, THENCE S-88°-33'-W, A DISTANCE OF 586.50 FEET, THENCE N-01°-27'-W, A DISTANCE OF 355.00 FEET, THENCE N-88°-33'-W, A DISTANCE OF 574.60 FEET, TO THE WEST LINE OF SAID SECTION 6, THENCE S-00°-19'-W, ALONG THE WEST LINE OF SAID SECTION 6, A DISTANCE OF 2629.29 FEET, TO THE POINT OF BEGINNING, CONTAINING 65.5 ACRES MORE OR LESS.

TRACT # 3 SURVEY OF THAT PART OF THE WEST HALF OF SECTION 6, TOWNSHIP 17 SOUTH, RANGE 2 WEST OF THE 6TH P.M. IN MC PHERSON COUNTY KANSAS, DESCRIBED AS FOLLOWS: BEGINNING AT THE NORTHWEST CORNER OF SAID SECTION 6, THENCE S-89°-53'-E, ALONG THE NORTH LINE OF SAID SECTION 6, A DISTANCE OF 2480.07 FEET, TO THE NORTHEAST CORNER OF THE NORTHWEST QUARTER OF SAID SECTION 6, THENCE S-00°-12'-W, ALONG THE EAST LINE OF SAID NORTHWEST QUARTER OF SAID SECTION 6, A DISTANCE OF 2639.72 FEET, TO THE SOUTHEAST CORNER OF THE NORTHWEST QUARTER OF SAID SECTION 6, THENCE N-89°-55'-W, ALONG THE SOUTH LINE OF SAID NORTHWEST QUARTER OF SAID SECTION 6, A DISTANCE OF 1300.02 FEET, THENCE N-00°-29'-E, A DISTANCE OF 225.10 FEET, THENCE S-88°-33'-W, A DISTANCE OF 588.00 FEET, THENCE N-00°-00'-E, A DISTANCE OF 1703.70 FEET, THENCE N-89°-30'-W, A DISTANCE OF 584.00 FEET, TO THE WEST LINE OF SAID SECTION 6, THENCE N-00°-00'-E, ALONG THE WEST LINE OF SAID SECTION 6, A DISTANCE OF 725.50 FEET, TO THE POINT OF BEGINNING, CONTAINING 120.0 ACRES MORE OR LESS.



*D.W. Bassett*  
 SURVEYOR 5/2/89  
**D. W. BASSETT**  
 133 MILLVIEW ROAD  
 SALINA, KANSAS 67401  
 (913) 825-5058