



Branch Offices
511 North Poplar Street
Newton, KS 67114
Office: (316) 283 - 5053
Fax: (316) 283 - 5073

115 East Marlin, Suite 102
McPherson, KS. 67460
Office: (620) 241-4441
Fax: (620) 241-4458

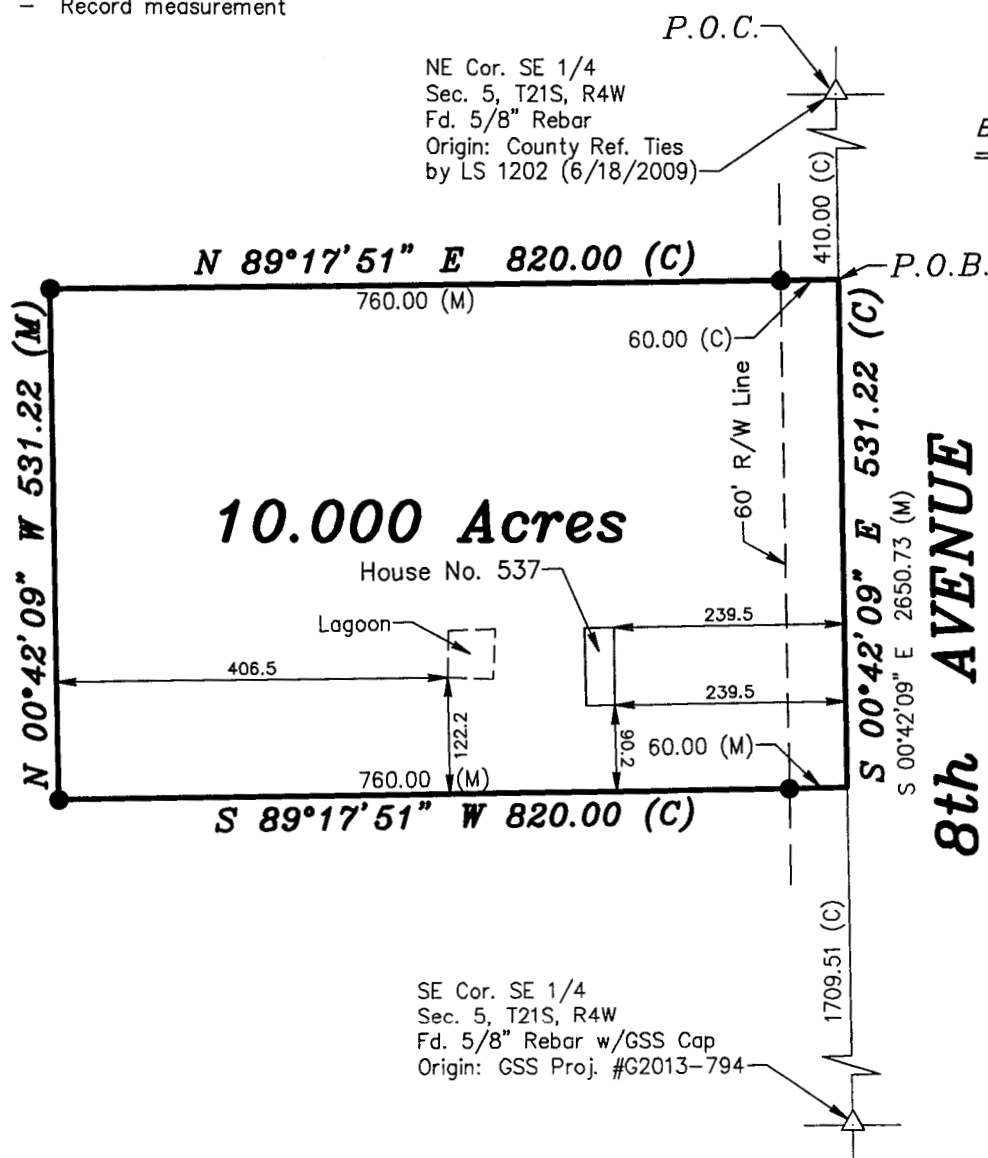
Project No. G2017-381

A portion of the Southeast Quarter of Section 5, Township 21 South, Range 4 West of the 6th Principal Meridian, McPherson County, Kansas described as follows:

Commencing at the Northeast corner of said Southeast Quarter; thence on a NAD 83 Kansas South Zone bearing of South 00°42'09" East on the East line of said Southeast Quarter a distance of 410.00 feet to the point of beginning; thence continuing South 00°42'09" East on said South line a distance of 531.22 feet; thence South 89°17'51" West perpendicular to said East line a distance of 820.00 feet; thence North 00°42'09" West parallel with said East line a distance of 531.22 feet; thence North 89°17'51" East perpendicular to said East line a distance of 820.00 feet to the point of beginning.

Containing 10.000 Acres and subject to a road right of way easement across the East 60.00 feet thereof, and any other easements or restrictions of record.

△ - Sectional Monument Found
 ○ - Survey Monument Found
 ● - 5/8" x 24" Rebar Set w/GSS Cap
 (C) - Calculated
 (M) - Measured
 (R) - Record measurement



Scale: 1"=200'

I hereby certify this plat to be a true, correct and complete representation of the property described above as surveyed under my supervision.
Dated: 6/7/2017

Copyright © 2015 Garber Surveying Service, P.A.

Nicholas D. Schmidt SLG #192

Approved 6/17/2017 8:11:21 AM by ALOPEZ
Not Date & Time Wednesday, June 07, 2017 9:21:17 AM User Path U:\DD\ GSSFILES\2017\20170381 C38\dsq\20170381 bs