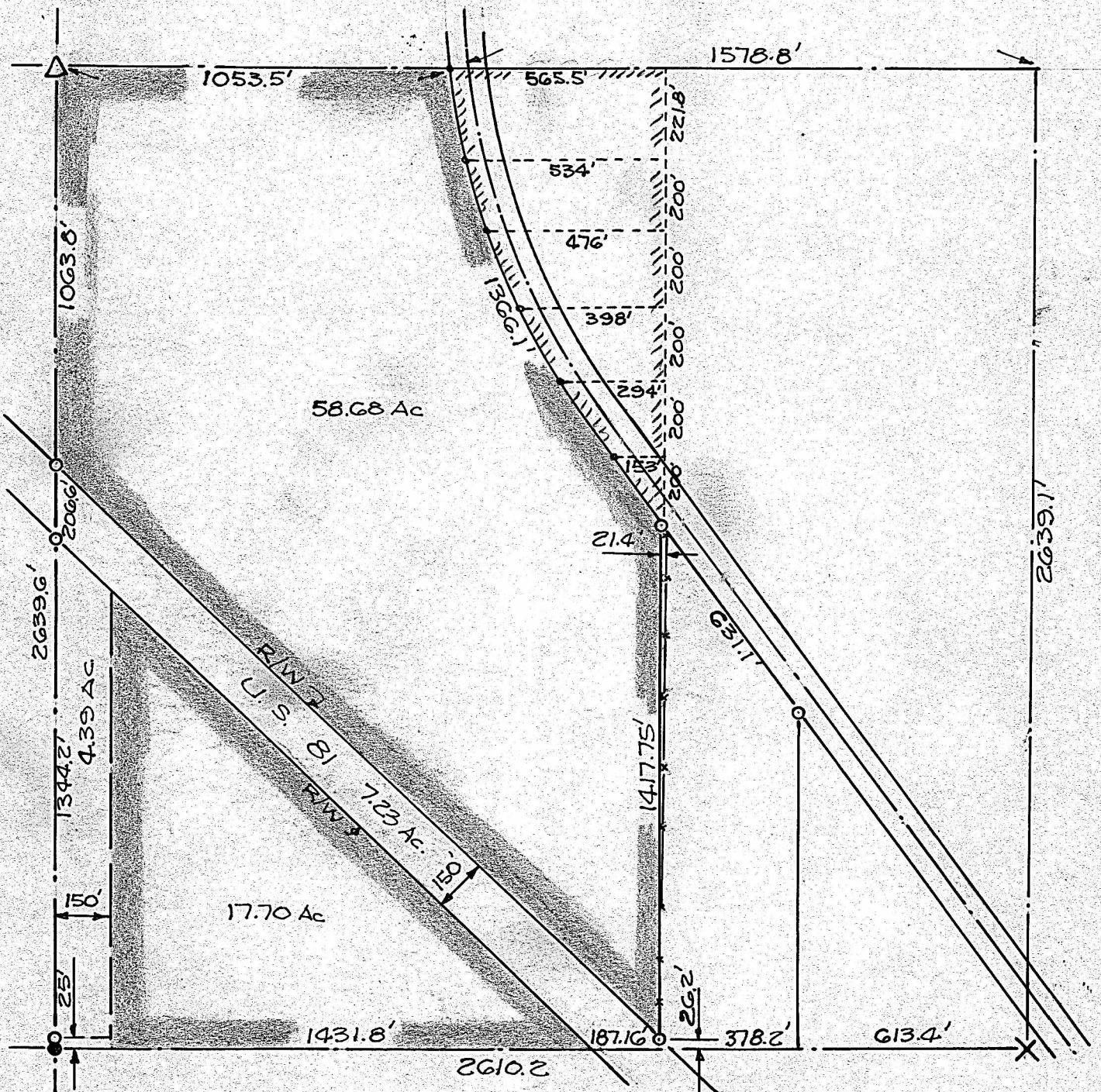


SURVEY OF TRACT IN THE
SE $\frac{1}{4}$ SECTION 5-T20S-R3W
MCIPHERSON COUNTY, KS.



● PINS IN PLACE

○ PINS SET ON THIS SURVEY

STATE OF KANSAS) SS
COUNTY OF McPHERSON)

I, FRANCIS D. WAGNER, COUNTY ENGINEER OF McPHERSON COUNTY DO HEREBY, CERTIFY, THAT I DID CAUSE TO BE DONE ON THE 11TH DAY OF AUGUST, 1958, A SURVEY IN THE SE $\frac{1}{4}$ SECTION 5-T20S-R3W OF THE 6TH PRINCIPAL MERIDIAN AND THAT THE ACCOMPANYING PLAT IS A TRUE EXHIBIT OF SAID SURVEY.

Francis D. Wagner

FRANCIS D. WAGNER
COUNTY ENGINEER
MCIPHERSON COUNTY

AUGUST 21, 1958

MICROFILM