

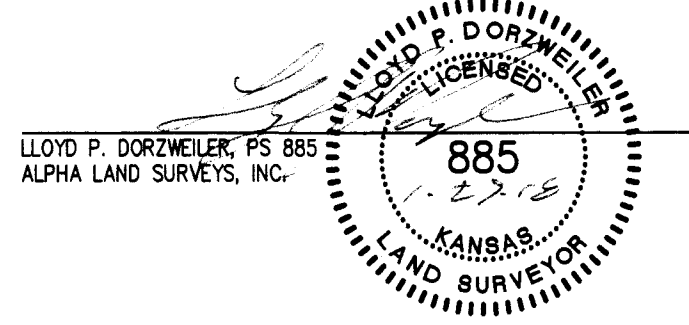
NW CORNER NE 1/4  
SECTION 5, T19S, R5W  
FOUND 1/5" REBAR SET BY  
"GARBER SURVEYING" 0.6 DEEP  
FROM TIES AT MCPHERSON  
COUNTY PUBLIC WORKS

NE CORNER NE 1/4  
SECTION 5, T19S, R5W  
FOUND 1/2" REBAR 0.5 DEEP  
FROM TIES BY SAM, INC.  
ON FILE WITH MCPHERSON  
COUNTY PUBLIC WORKS

DESCRIPTION:  
THE SOUTH HALF OF THE NORTHEAST QUARTER AND THE NORTH HALF OF THE SOUTHEAST QUARTER OF SECTION  
5, TOWNSHIP 19 SOUTH, RANGE 5 WEST OF THE 6TH PRINCIPAL MERIDIAN, MCPHERSON COUNTY, KANSAS.

GENERAL NOTES:  
1) SECTION CORNER REFERENCE TIES FILED WITH THE KANSAS STATE HISTORICAL SOCIETY AND THE MCPHERSON  
COUNTY PUBLIC WORKS DEPARTMENT AS REQUIRED BY KSA 1987 SUPP. 58-2011.  
2) NO TITLEWORK WAS PROVIDED BY CLIENT FOR SUBJECT PROPERTY. ALL EASEMENTS AND RIGHTS-OF-WAYS  
AFFECTING SUBJECT PROPERTY MAY NOT BE SHOWN.

SURVEYORS CERTIFICATE:  
I HEREBY CERTIFY THAT THIS SURVEY WAS MADE UNDER MY SUPERVISION ON JANUARY 18, 2018.



- LEGEND
- - FOUND SURVEY MONUMENT
  - △ - FOUND SECTION SUBDIVISION CORNER
  - - FOUND "X" CUT IN CONCRETE
  - ▲ - SET 1/2"x24" REBAR WITH CAP
  - - STAMPED "ALPHA CLS-184"
  - ✱ - SET "X" CUT IN CONCRETE
  - ⊠ - RIGHT-OF-WAY MARKER
  - R - RECORD
  - M - MEASURED
  - C - CALCULATED MEASURE
  - PRO - PROPORTIONED
  - POB - POINT OF BEGINNING

NW CORNER SW 1/4  
SECTION 5, T19S, R5W  
FOUND P-K NAIL AT SURFACE SET BY  
MCPHERSON COUNTY PUBLIC WORKS  
FROM TIES AT MCPHERSON  
COUNTY PUBLIC WORKS  
REPLACED WITH 1/2"x24" REBAR  
WITH PLASTIC CAP STAMPED  
"ALPHA CLS-184"

NW CORNER S 1/2 NE 1/4  
SECTION 5, T19S, R5W

NE CORNER S 1/2 NE 1/4  
SECTION 5, T19S, R5W

S 1/2 NE 1/4  
80.787 ACRES

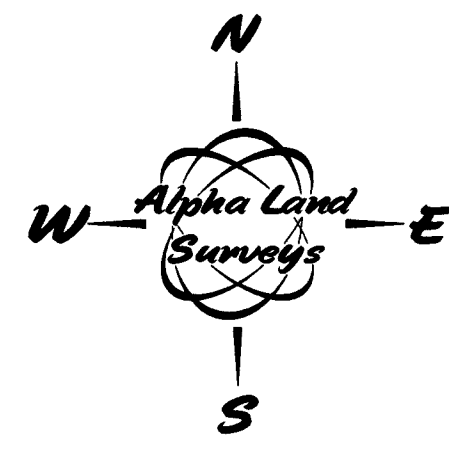
N 1/2 SE 1/4  
80.166 ACRES

2ND AVENUE

SW CORNER SW 1/4  
SECTION 5, T19S, R5W  
FOUND 1/5" REBAR SET BY  
"GARBER SURVEYING" 0.6 DEEP  
FROM TIES AT MCPHERSON  
COUNTY PUBLIC WORKS

SW CORNER SE 1/4  
SECTION 5, T19S, R5W  
FOUND 5/8" REBAR SET BY  
"GARBER SURVEYING" 0.1 DEEP  
FROM TIES AT MCPHERSON  
COUNTY PUBLIC WORKS

SE CORNER SE 1/4  
SECTION 5, T19S, R5W  
FOUND 5/8" REBAR  
FROM TIES BY SAM, INC.  
ON FILE WITH MCPHERSON  
COUNTY PUBLIC WORKS



BASIS OF BEARINGS IS NAD83 GRID  
KANSAS SOUTH ZONE

SURVEY FOR: <b>TIMOTHY BORNHOLDT</b>	
SURVEY TYPE: <b>BOUNDARY</b>	
<b>Alpha Land Surveys, Inc.</b> 216 WEST SECOND AVENUE HUTCHINSON, KANSAS 67501 PH: (620) 728-0012 FAX: (620) 728-0413	
SURVEY DATE: 01/18/2018	PLOT DATE: 01/22/2018
DRAWN BY: RB	PROJ. NO.: 1800108
CHECKED BY: LPD	SHEET 1 OF 1