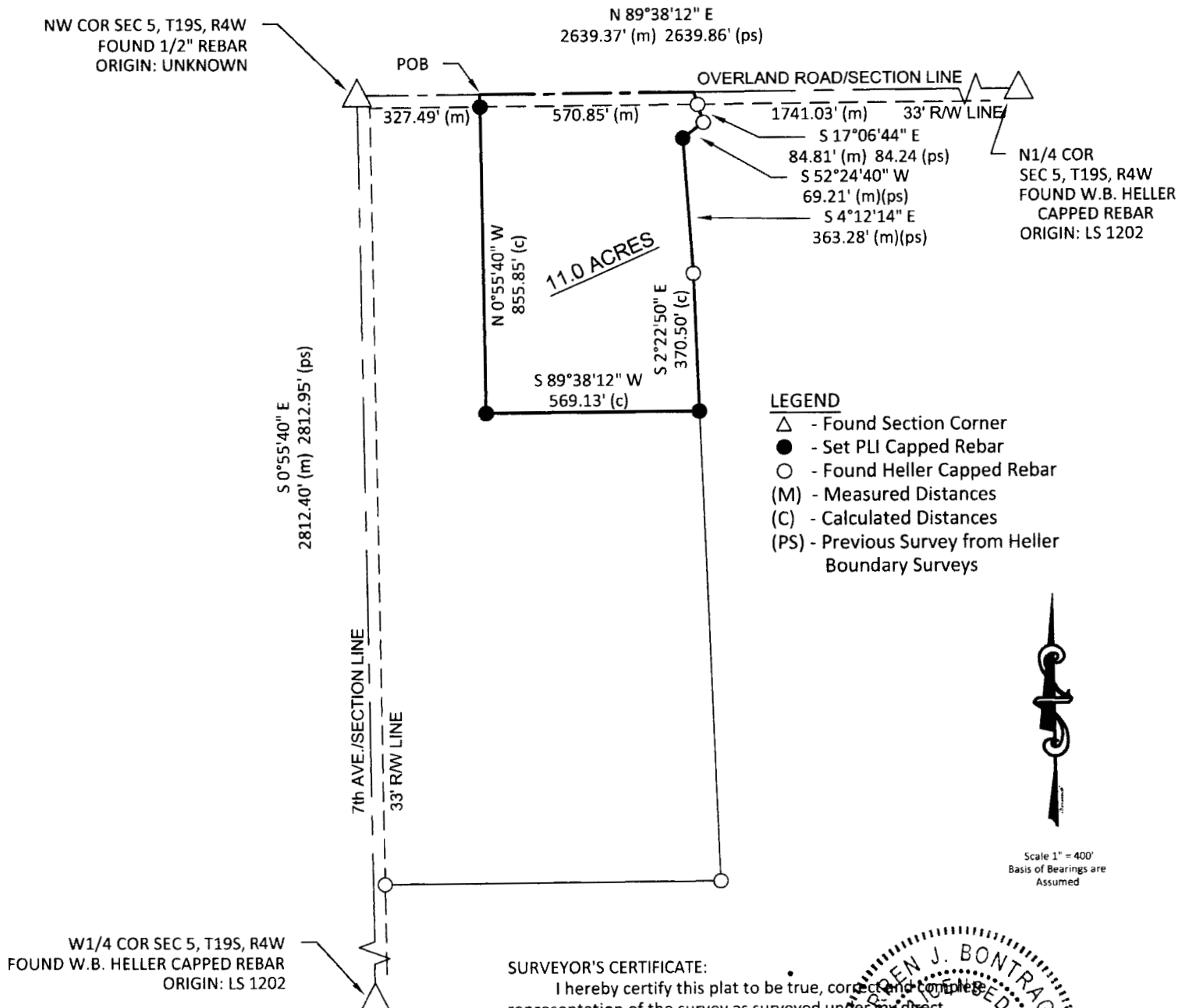


DESCRIPTION: A portion of the Northwest Quarter of Section 5, T19S, R4W of the Sixth Principle Meridian, McPherson County, Kansas, more particularly described as follows:

**NW/4 Section 5, T19S, R4W**

**SURVEYOR'S CERTIFICATE:**

I hereby certify this plat to be true, correct and complete representation of the survey as surveyed under my direct supervision, this 24th day of September, 2014.

Prairie Landworks, Inc.

McPherson, KS 67460

861 N.Vanguard St.

PH. 620-504-5049