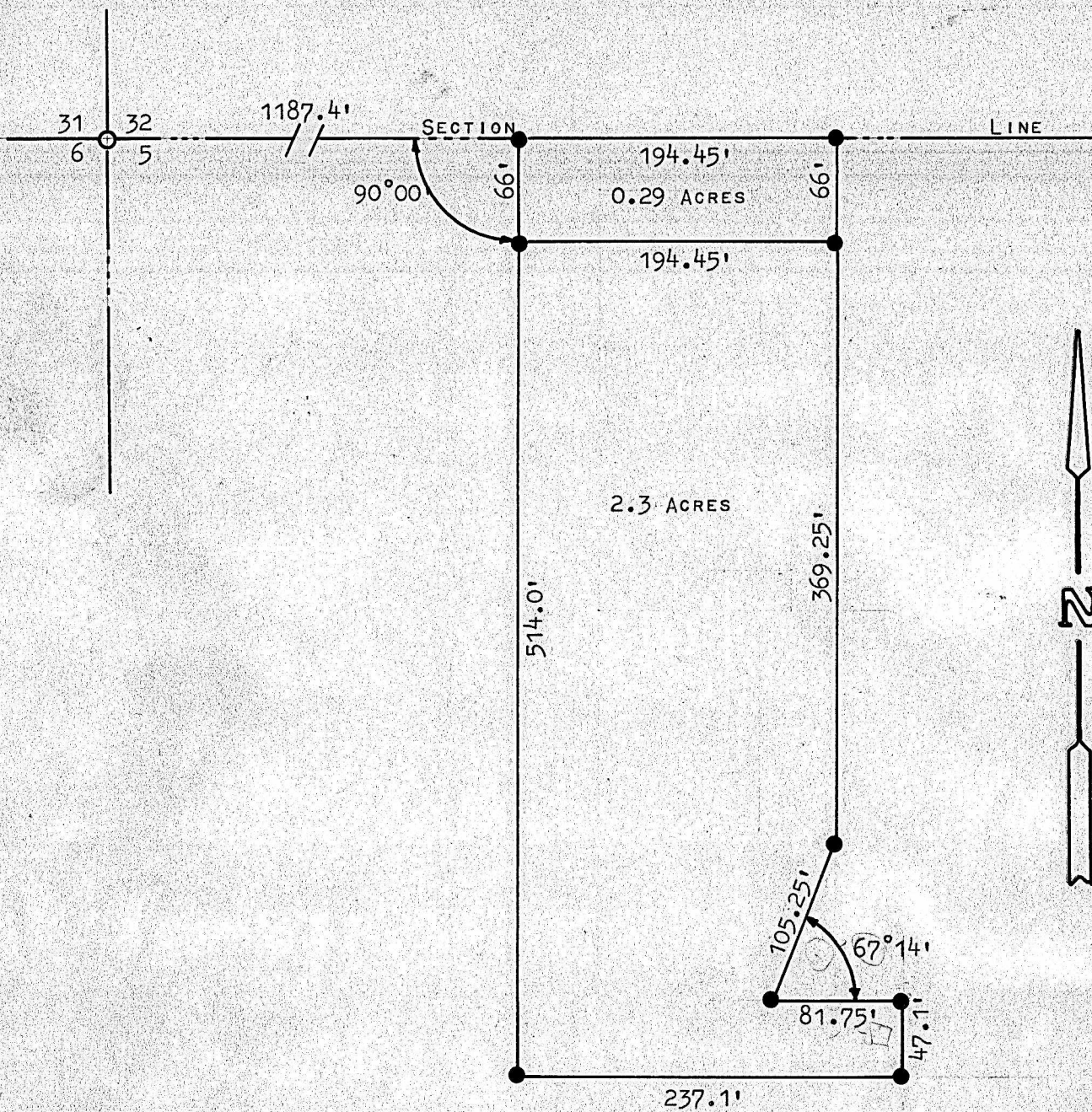


A TRACT OF LAND IN THE  
N.W.1/4 SECTION 5, T18S - R4W  
McPHERSON, KANSAS



- ⊙ COMMON CORNER GOVERNMENT MARKER
- PINS SET THIS SURVEY

STATE OF KANSAS )  
COUNTY OF MCPHERSON )

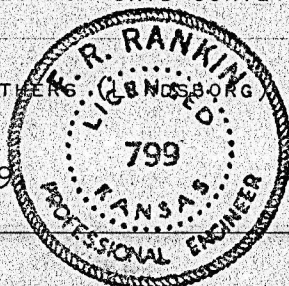
I, FRANCIS RANKIN, COUNTY ENGINEER OF MCPHERSON, KANSAS, DO HEREBY CERTIFY THAT UNDER MY SUPERVISION A SURVEY WAS DONE IN THE NW1/4 OF SECTION 5, T18S -R4W OF THE 6TH P.M. AND DESCRIBED AS FOLLOWS:

COMMENCING AT THE NW CORNER OF SAID NW1/4; THENCE EAST, ON THE NORTH LINE OF SAID SECTION 5, 1187.4 FEET; THENCE 90°00' SOUTH, A DISTANCE OF 66 FEET, TO A POINT OF BEGINNING; THENCE SOUTH 514.0 FEET; THENCE 90°00' EAST 237.1 FEET; THENCE 90°00' NORTH 47.1 FEET; THENCE 90°00' WEST 81.75 FEET; THENCE NORTHEAST, WITH AN EXTERIOR ANGLE OF 67°14', 105.25 FEET; THENCE NORTH 369.25 FEET TO A POINT 66 FEET SOUTH OF THE NORTH SECTION LINE OF SAID SECTION 5; THENCE 90°00' WEST 194.45 FEET TO THE PLACE OF BEGINNING. THE LAND HEREIN DESCRIBED CONTAINS 2.3 ACRES MORE OR LESS.

AND THE ABOVE PLAT IS A TRUE EXHIBIT OF SAID SURVEY AS FAR AS IT IS KNOWN TO ME.

SURVEY CALLED FOR BY PETERSON BROTHERS (LANSBORG)

SIGNED THIS 17 DAY OF APRIL, 1969



*Francis Rankin*  
FRANCIS RANKIN  
COUNTY ENGINEER  
MCPHERSON, KANSAS

MICROFILM