

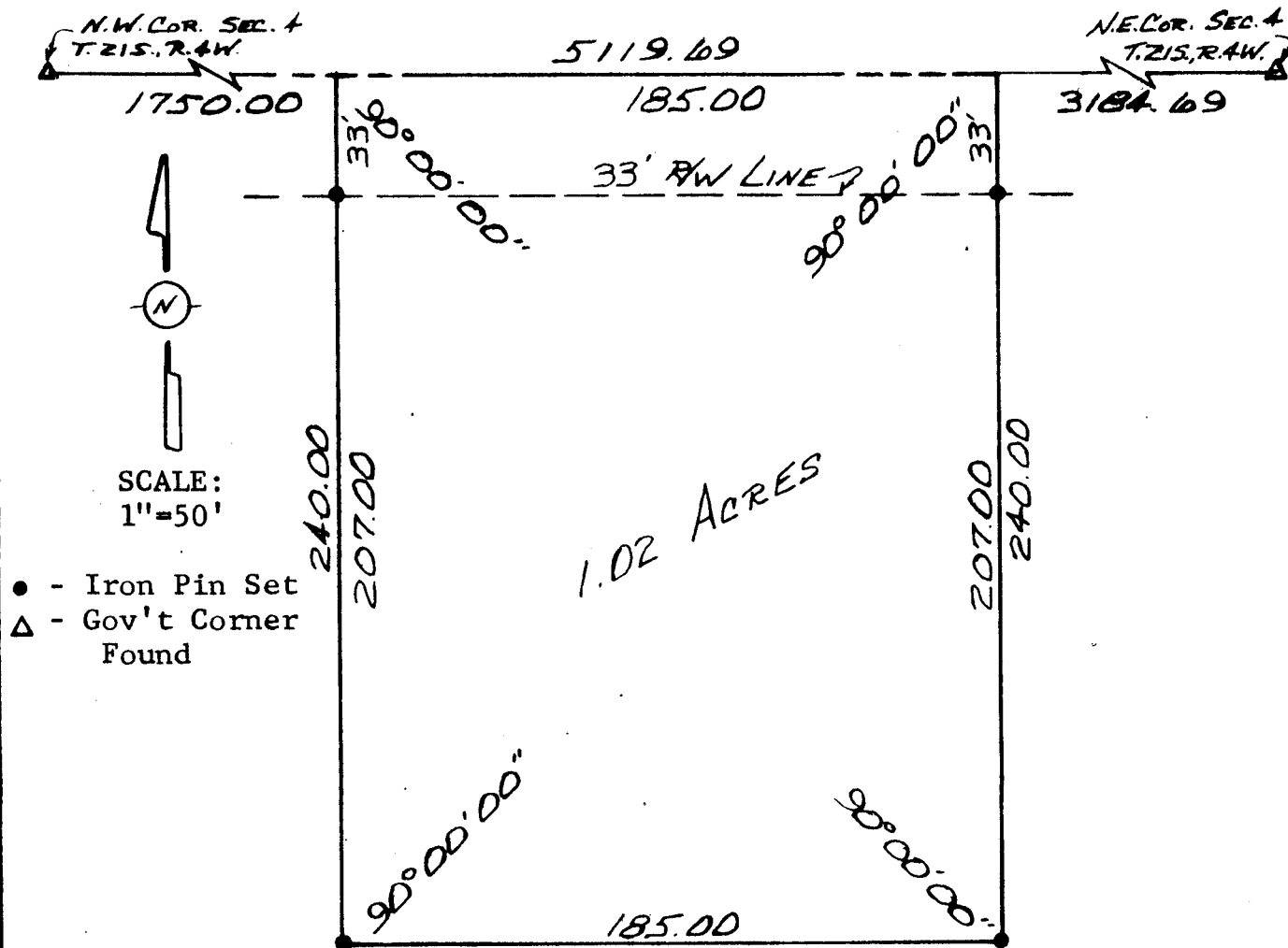
Survey for: Wes Koehn

By: Garber Surveying Service, P.A.

217 East First Ave., Suite 9

Hutchinson, Kansas 67501

DESCRIPTION: A tract in the N.½, N.W.¼ Section 4, T21S, R4W of the  
6th P.M. as more particularly described on the attached sheet.



I hereby certify this plat to be a true, correct  
and complete representation of the property described  
above and on the attached sheet, as surveyed by me,  
this 6th day of May 1981.

*Daniel E. Garber*  
Daniel E. Garber, R.L.S.

