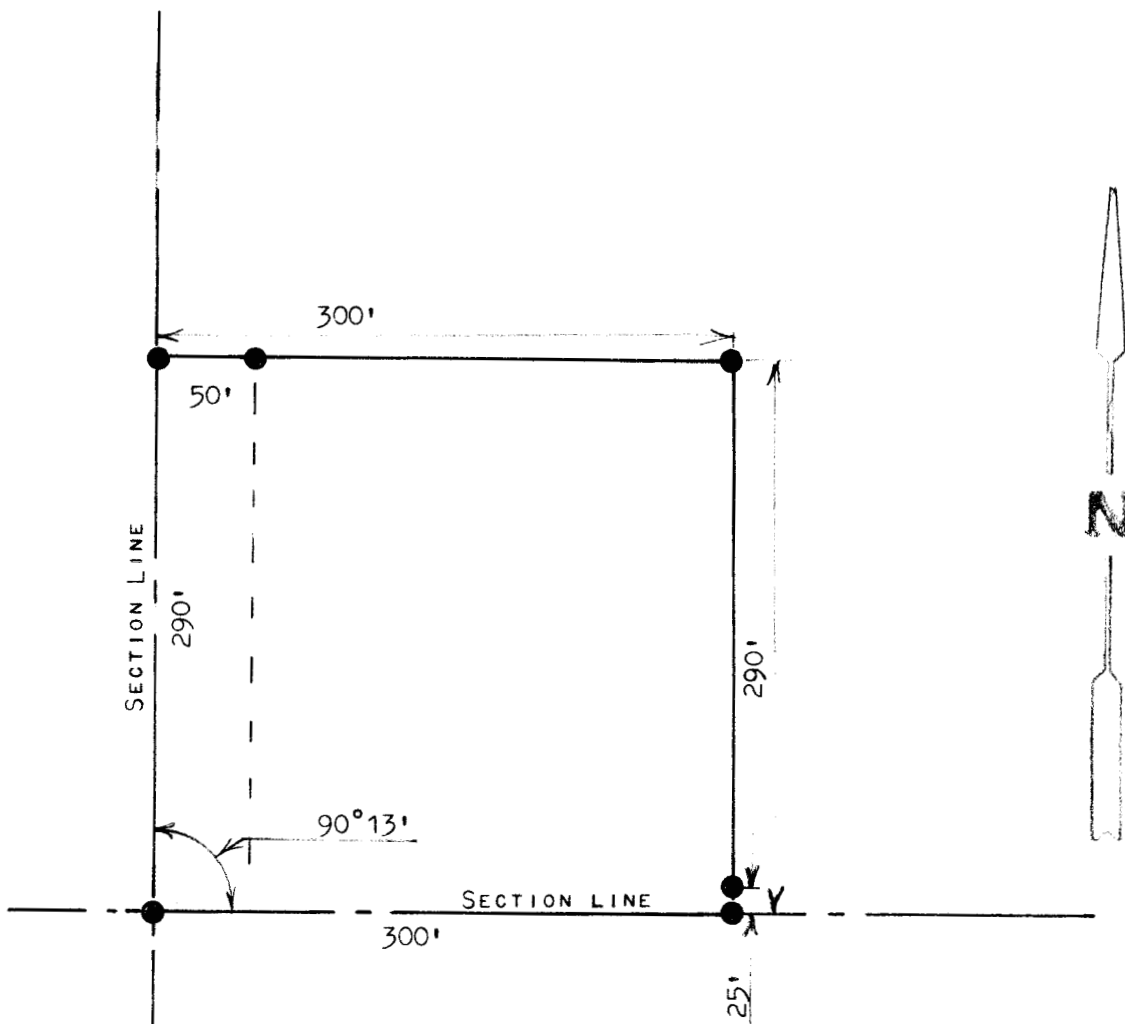


A SURVEY OF A TRACT OF LAND IN THE
SW 1/4, SECTION 4, T21S, R4W
MCPHERSON, COUNTY, KANSAS



● PINS SET THIS SURVEY

STATE OF KANSAS)
COUNTY OF MCPHERSON) SS

I, MELVIN FERGUSON, PROFESSIONAL ENGINEER OF THE STATE OF KANSAS
DO HEREBY CERTIFY THAT UNDER MY SUPERVISION A SURVEY WAS MADE
OF A TRACT OF LAND IN THE SW1/4, SECTION 4, T21S, R4W OF THE 6TH
P.M. AND DESCRIBED AS FOLLOWS;

BEGINNING AT THE SW CORNER OF SAID SW1/4, SECTION 4, T21S, R4W;
THENCE EAST ON SECTION LINE 300 FEET; THENCE NORTH PARALLEL TO
SECTION LINE 290 FEET; THENCE WEST TO SECTION LINE 300 FEET;
THENCE SOUTH 290 FEET TO PLACE OF BEGINNING, SAID TRACT OF LAND
CONTAINS 2.0 ACRES MORE OR LESS, AND THE ABOVE PLAT IS A TRUE EXHIBIT
OF SAID SURVEY AS FAR AS IT IS KNOWN TO ME.

SURVEY CALLED FOR BY DAVID GOERTZEN

SIGNED THIS 29th DAY OF APRIL, 1974

Melvin Ferguson
MELVIN FERGUSON
PROFESSIONAL ENGINEER
MCPHERSON, KANSAS



ENCLOSURE