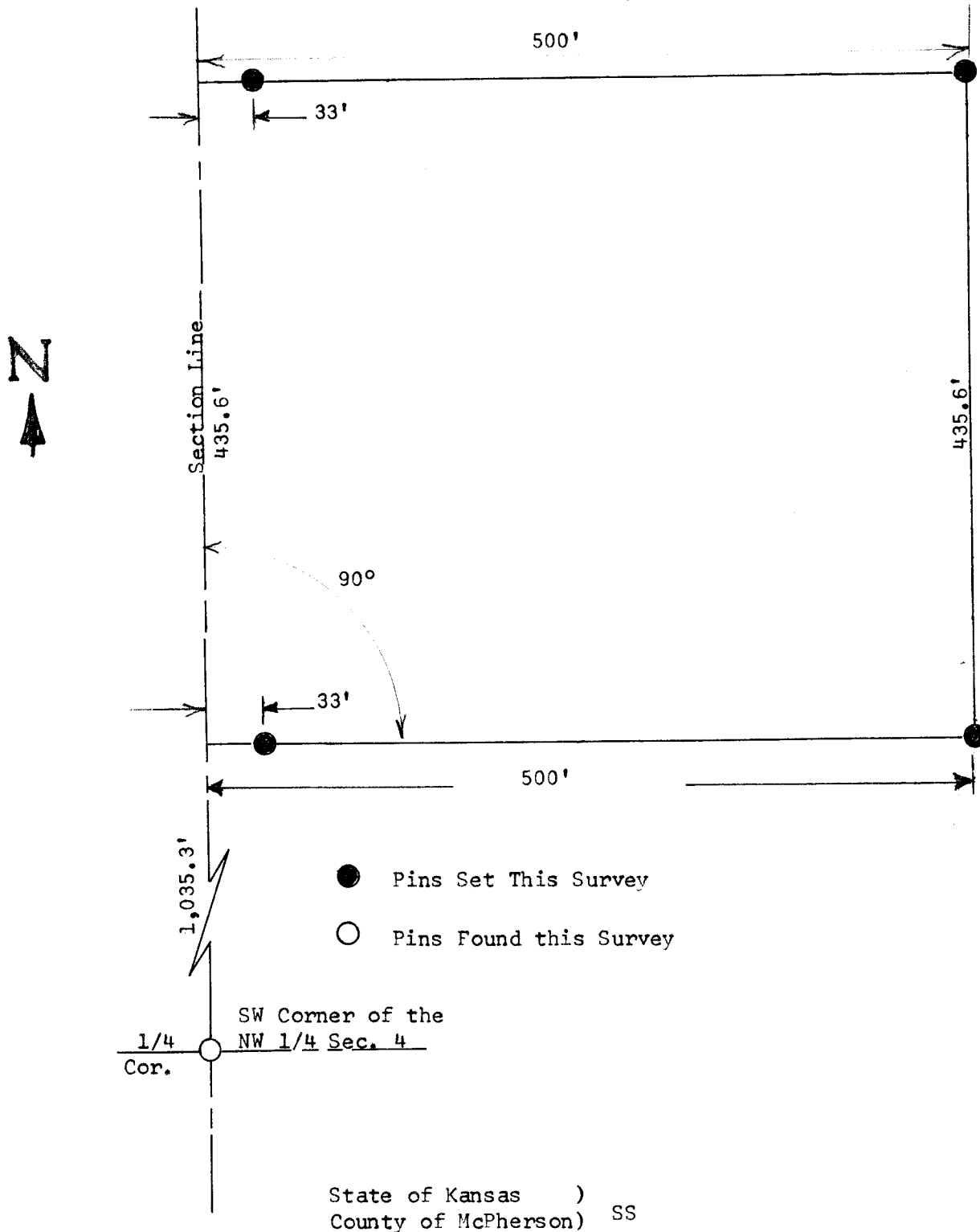


A SURVEY OF A TRACT OF LAND IN THE  
NW 1/4 SECTION 4, T21S, R3W  
MC PHERSON COUNTY, KANSAS



I, Melvin Ferguson, County Engineer of McPherson County, Kansas do hereby certify that under my supervision a survey was made of a tract of land in the NW 1/4 Section 4, T21S, R3W of the 6th P.M. and described as follows:

Beginning 1,035.3 feet North of the SW corner of said NW 1/4 Section 4, T21S, R3W; thence right angle East 500 feet; thence North parallel with Section Line 435.6 feet; thence West 500 feet; thence South 435.6 feet to place of beginning. Said tract of land contains 5.0 acres more or less. The accompanying plat is a true exhibit of said survey as far as it is known to me.

Survey called for by Richard D. Schrag

Signed this 23<sup>rd</sup> day of April, 1974

*Melvin Ferguson*  
Melvin Ferguson, P. E.  
County Engineer  
McPherson County, Kansas

