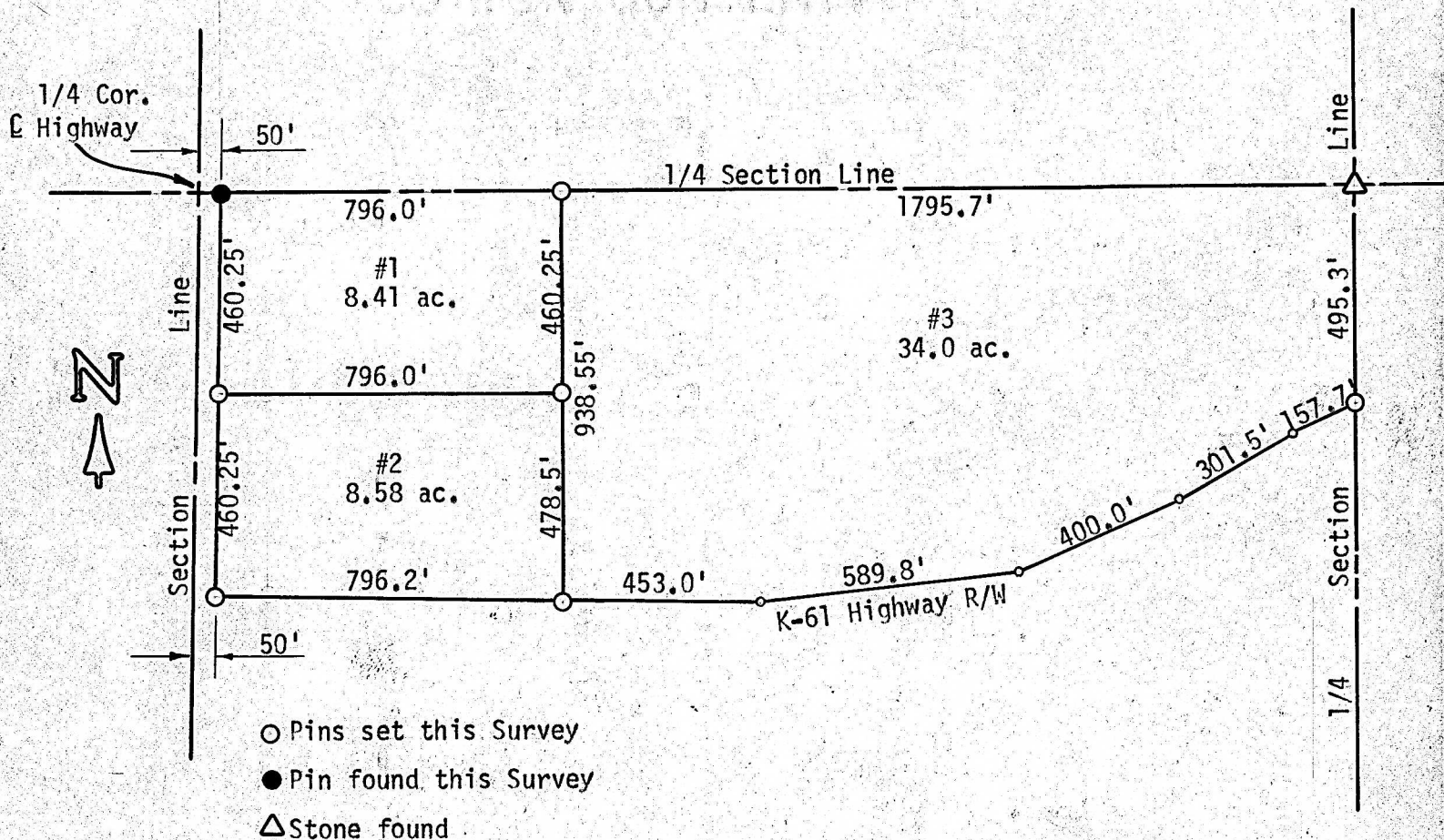


A SURVEY OF TRACTS OF LAND IN
THE N1/2 OF THE SW1/4 OF
SECTION 4, T20S - R3W



State of Kansas)ss
County of McPherson)

I, F. R. Rankin, County Engineer of McPherson Co., Kansas, do hereby certify that under my supervision a Survey was made in the SW1/4 of Section 4, T20S-R3W of the 6th P. M. and described as follows:

Tract #1 - Beginning 50 feet East of the NW corner of said SW1/4, thence East, on 1/4 Section Line, 796.0 feet; thence South, parallel with the West Section Line, 460.25 feet; thence West, parallel with the 1/4 Section Line, 796.0 feet; thence North, along the Highway R/W, 460.25 feet to the place of beginning. Said tract contains 8.41 acres more or less.

Tract #2 - Beginning 50 feet East and 460.25 feet South of the NW corner of said SW1/4, thence East, parallel with the 1/4 Section Line, 796.0 feet; thence South, parallel with the Section Line, 478.3 feet to K-61 Highway R/W Line; thence WNW, along the Highway R/W, 796.2'; thence North, Along H/W R/W, 460.25' to the place of beginning. Said tract contains 8.58 Ac. more or less.

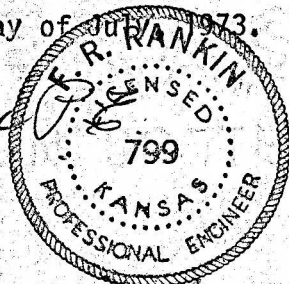
Tract #3 - Beginning 846.0 feet east of the NW corner of said SW1/4, thence East, on the 1/4 Section Line, 1795.7 feet to the center of Section 4, thence South, on the 1/4 Section Line, 495.3 feet to K-61 Highway R/W; thence along R/W, South 66°52' West, 157.7 feet; thence along R/W, South 61°10' West, 301.5 feet; thence along R/W, South 66°53' West, 400.0 feet; thence along R/W, South 85°10' West, 589.8 feet; thence along R/W, North 86°53' West, 453.0 feet; thence North 938.55 feet to the place of beginning. Said tract contains 34.0 acres more or less.

I also certify that the accompanying plat is a true exhibit of said Survey as far as it is known to me.

Survey called for by Larry Weibert.

Signed on this 11 day of July, 1973.

F. R. Rankin
F. R. Rankin
County Engineer
McPherson Co., Kansas



MICROFILM