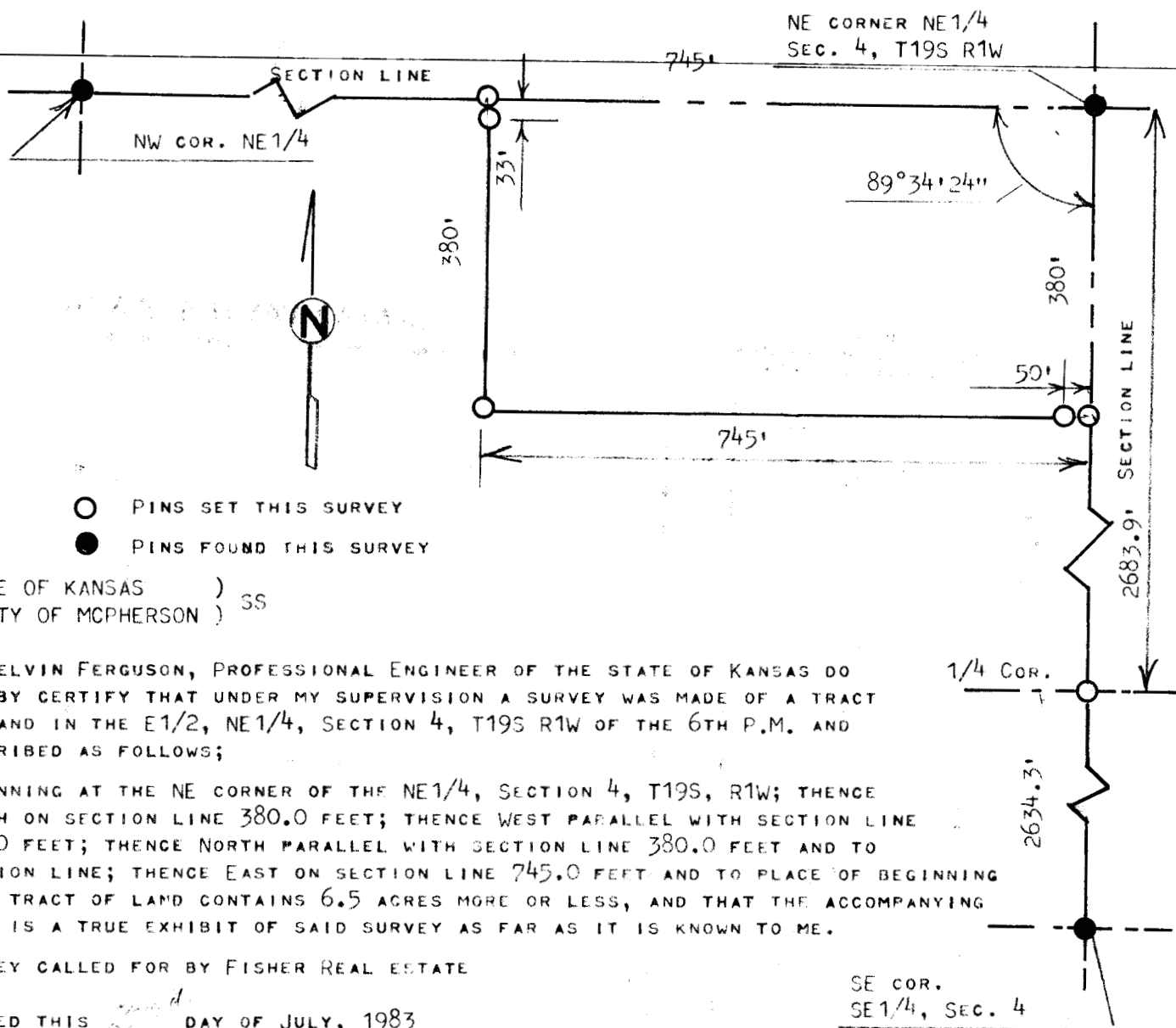


A SURVEY OF A TRACT OF LAND IN THE  
E1/2, NE1/4, SECTION 4, T19S, R1W  
McPHERSON COUNTY, KANSAS



STATE OF KANSAS )  
COUNTY OF MCPHERSON ) SS

I, MELVIN FERGUSON, PROFESSIONAL ENGINEER OF THE STATE OF KANSAS DO  
HEREBY CERTIFY THAT UNDER MY SUPERVISION A SURVEY WAS MADE OF A TRACT  
OF LAND IN THE E1/2, NE1/4, SECTION 4, T19S R1W OF THE 6TH P.M. AND  
DESCRIBED AS FOLLOWS;

BEGINNING AT THE NE CORNER OF THE NE1/4, SECTION 4, T19S, R1W; THENCE  
SOUTH ON SECTION LINE 380.0 FEET; THENCE WEST PARALLEL WITH SECTION LINE  
745.0 FEET; THENCE NORTH PARALLEL WITH SECTION LINE 380.0 FEET AND TO  
SECTION LINE; THENCE EAST ON SECTION LINE 745.0 FEET AND TO PLACE OF BEGINNING  
SAID TRACT OF LAND CONTAINS 6.5 ACRES MORE OR LESS, AND THAT THE ACCOMPANYING  
PLAT IS A TRUE EXHIBIT OF SAID SURVEY AS FAR AS IT IS KNOWN TO ME.

SURVEY CALLED FOR BY FISHER REAL ESTATE

SIGNED THIS 2nd DAY OF JULY, 1983

MELVIN FERGUSON  
PROFESSIONAL ENGINEER  
MCPHERSON, KANSAS



SE COR.  
SE1/4, SEC. 4