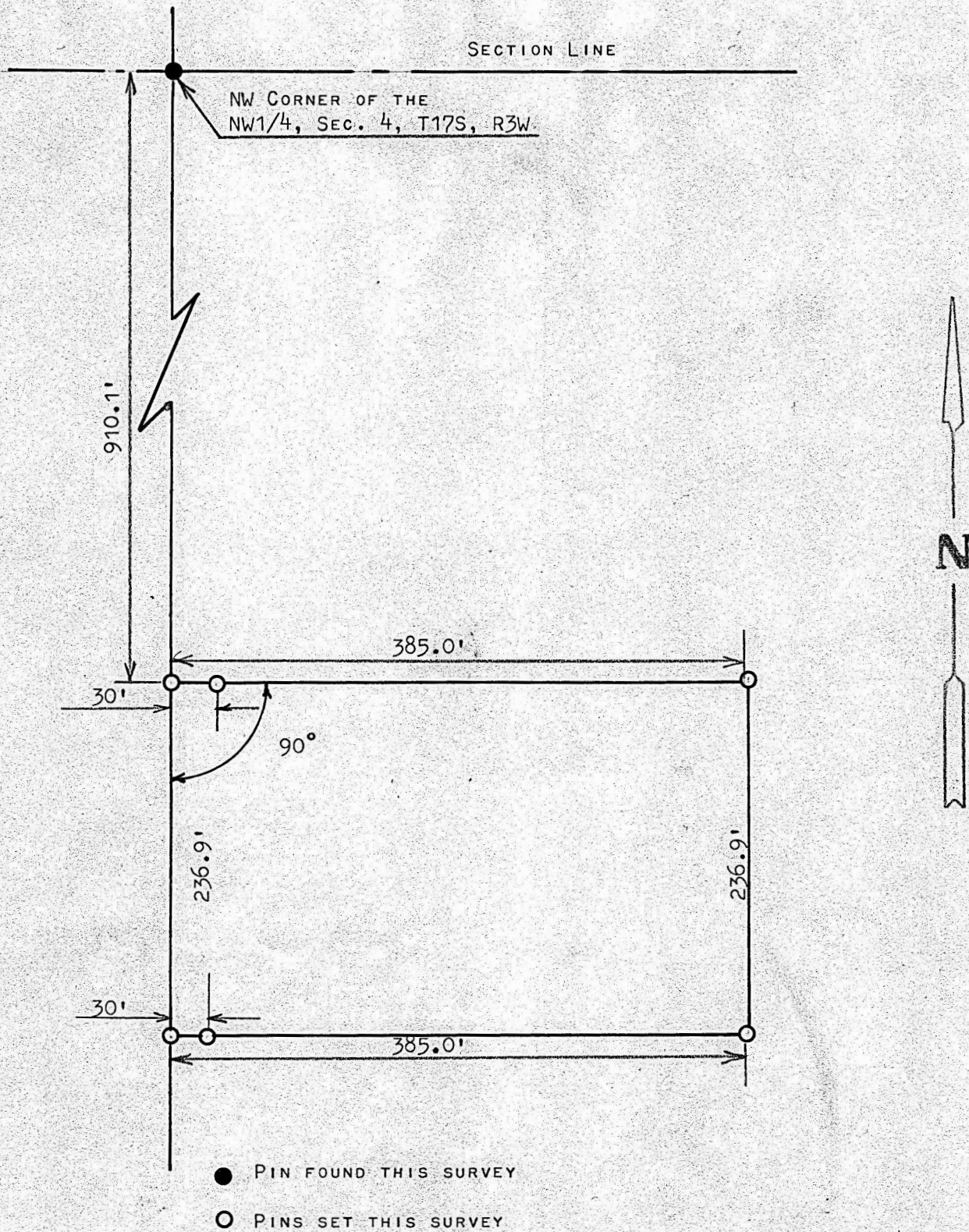


A SURVEY OF A TRACT OF LAND IN THE
NW1/4, SECTION 4, T17S R3W
MCPHERSON, COUNTY



STATE OF KANSAS)
COUNTY OF MCPHERSON) SS

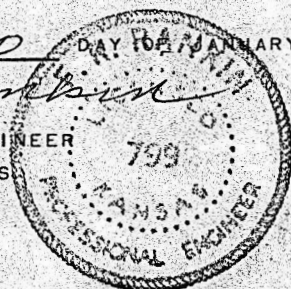
I, FRANCIS RANKIN, PROFESSIONAL ENGINEER OF THE STATE OF KANSAS DO
HEREBY CERTIFY THAT UNDER MY SUPERVISION A SURVEY WAS MADE OF A TRACT
OF LAND IN THE NW1/4, SECTION 4, T17S R3W OF THE 6TH P.M. AND DESCRIBED
AS FOLLOWS;

BEGINNING AT A POINT 910.1 FEET SOUTH OF THE NW CORNER OF THE NW1/4,
OF SAID SECTION 4, T17S R3W; THENCE EAST AT A RIGHT ANGLE FROM
SECTION LINE 385.0 FEET; THENCE SOUTH PARALLEL WITH SECTION LINE
236.9 FEET; THENCE WEST 385.0 FEET; THENCE NORTH 236.9 FEET TO PLACE
OF BEGINNING SAID TRACT OF LAND CONTAINS 2.1 ACRES MORE OR LESS, AND
THAT THE ACCOMPANYING PLAT IS A TRUE EXHIBIT OF SAID SURVEY AS FAR AS
IT IS KNOWN TO ME.

SURVEY CALLED FOR BY ROBERT PETERSON

SIGNED THIS 20 DAY OF JANUARY, 1969

FRANCIS RANKIN
PROFESSIONAL ENGINEER
MCPHERSON, KANSAS



MICROFILM