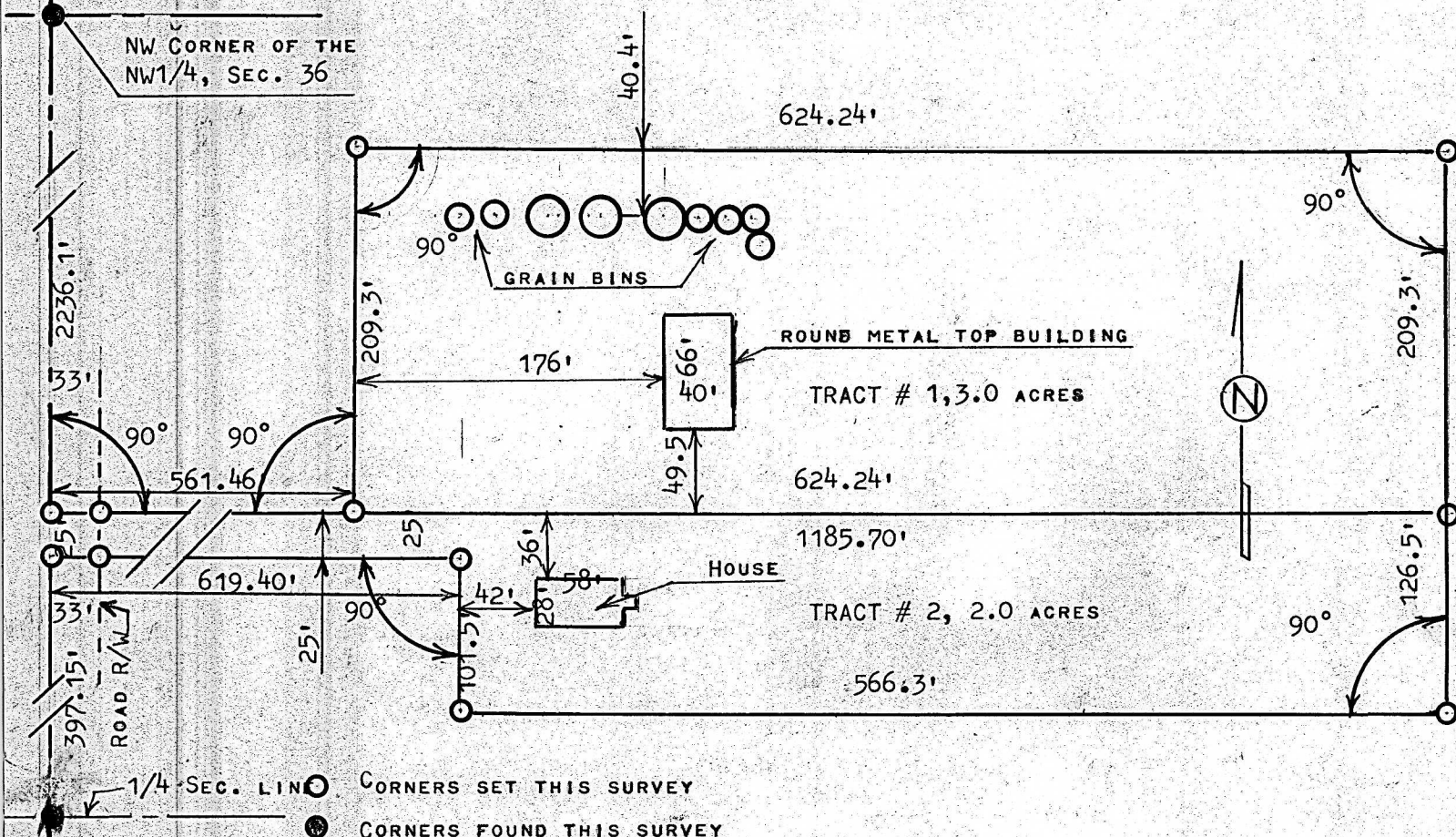


A SURVEY OF A TRACT OF LAND IN THE NW1/4,
SECTION 36, T21S, R4W, MCPHERSON COUNTY, KANSAS



STATE OF KANSAS)
COUNTY OF MCPHERSON) SS

I, MELVIN FERGUSON, PROFESSIONAL ENGINEER OF THE STATE OF KANSAS DO HEREBY CERTIFY THAT UNDER MY SUPERVISION A SURVEY WAS MADE IN THE NW1/4, SECTION 36, T21S, R4W, OF THE 6TH P.M. AND DESCRIBED AS FOLLOWS:

COMMENCING AT THE NW CORNER OF THE NW1/4, OF SAID SECTION 36, T21S R4W; THENCE SOUTH ON SECTION LINE 2236.1 FEET AND RIGHT ANGLE EAST 561.46 FEET FOR PLACE OF BEGINNING; THENCE RIGHT ANGLE NORTH AND PARALLEL WITH SECTION LINE 209.3 FEET; THENCE EAST RIGHT ANGLE AND A DISTANCE OF 624.24 FEET; THENCE SOUTH AT A RIGHT ANGLE AND A DISTANCE OF 209.3 FEET; THENCE WEST AT A RIGHT ANGLE AND A DISTANCE OF 624.24 FEET AND TO PLACE OF BEGINNING SAID TRACT OF LAND CONTAINS 3.0 ACRES MORE OR LESS.

TRACT # 2

COMMENCING AT THE NW CORNER OF THE NW1/4, SECTION 36, T21S, R4W; THENCE SOUTH ON SECTION LINE 2236.1 FEET FOR PLACE OF BEGINNING; THENCE EAST AT A RIGHT ANGLE AND A DISTANCE OF 1185.70 FEET; THENCE SOUTH AT A RIGHT ANGLE AND A DISTANCE OF 126.5 FEET; THENCE WEST AT A RIGHT ANGLE AND A DISTANCE OF 566.3 FEET; THENCE NORTH AT A RIGHT ANGLE AND A DISTANCE OF 101.5 FEET; THENCE WEST AT A RIGHT ANGLE AND A DISTANCE OF 619.40 FEET AND TO SECTION LINE; THENCE NORTH ON SECTION LINE 25 FEET AND TO PLACE OF BEGINNING SAID TRACT OF LAND CONTAINS 2.0 ACRES MORE OR LESS, AND THAT THE ACCOMPANYING PLAT IS A TRUE EXHIBIT OF SAID SURVEY AS FAR AS IT IS KNOWN TO ME.

SIGNED THIS 7TH DAY OF SEPTEMBER, 1982

SURVEY CALLED FOR BY WALDO ENNS

MELVIN FERGUSON
PROFESSIONAL ENGINEER
MCPHERSON

