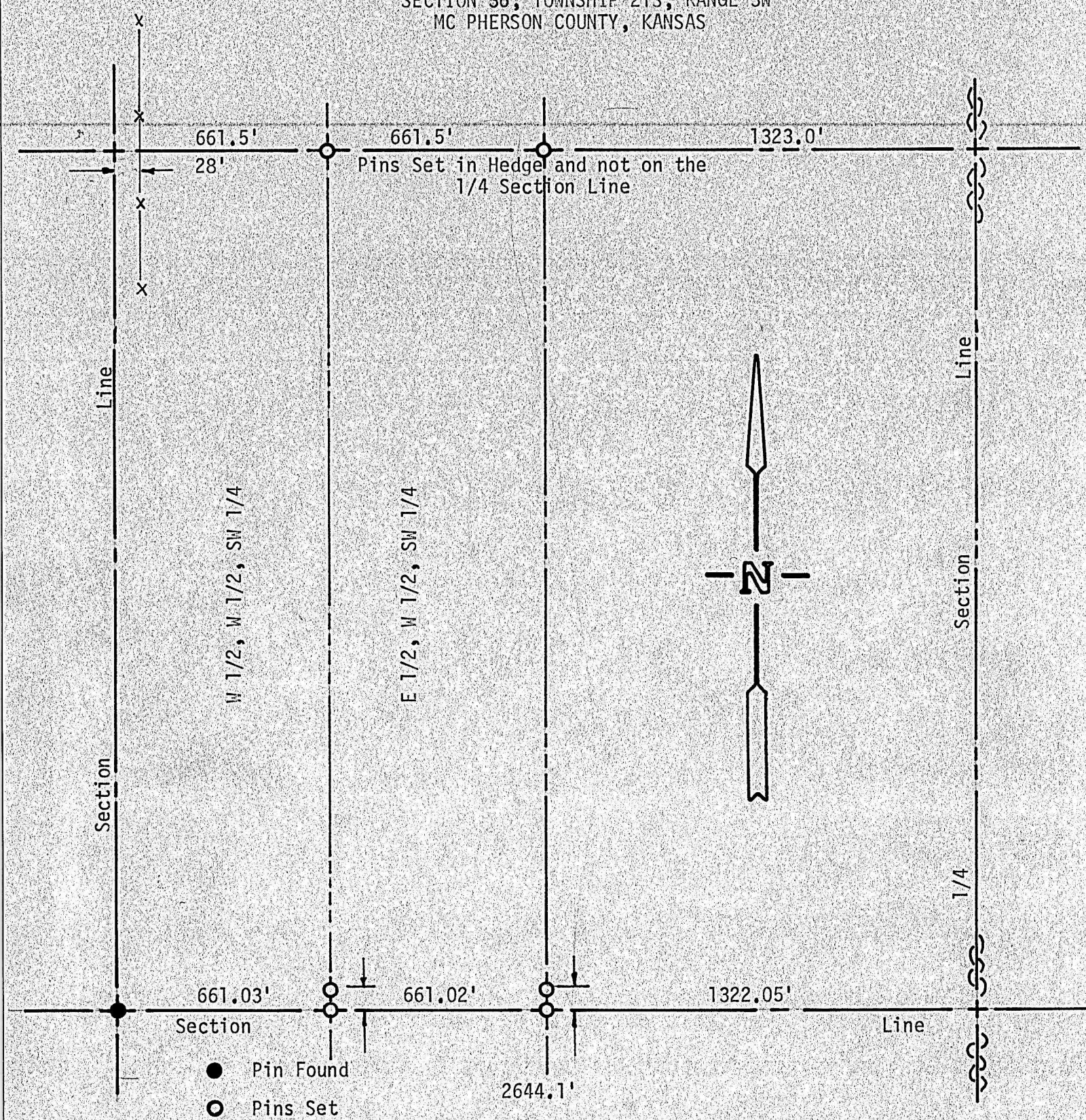


A SURVEY OF THE W 1/2, W 1/2, SW 1/4
SECTION 36, TOWNSHIP 21S, RANGE 3W
MC PHERSON COUNTY, KANSAS



State of Kansas)
County of McPherson) SS

I, F. R. Rankin, County Engineer of McPherson County, Kansas, do hereby certify that under my supervision a survey was made of the W 1/2, W 1/2, SW 1/4 Section 36, T21S, R3W of the 6th P.M. and the above plat is a true exhibit of said survey as far as it is known to me.

Survey called for by Ray Gehring

Signed this 8 day of May, 1972

F. R. Rankin
F. R. Rankin, P. E.
County Engineer
McPherson, Kansas

