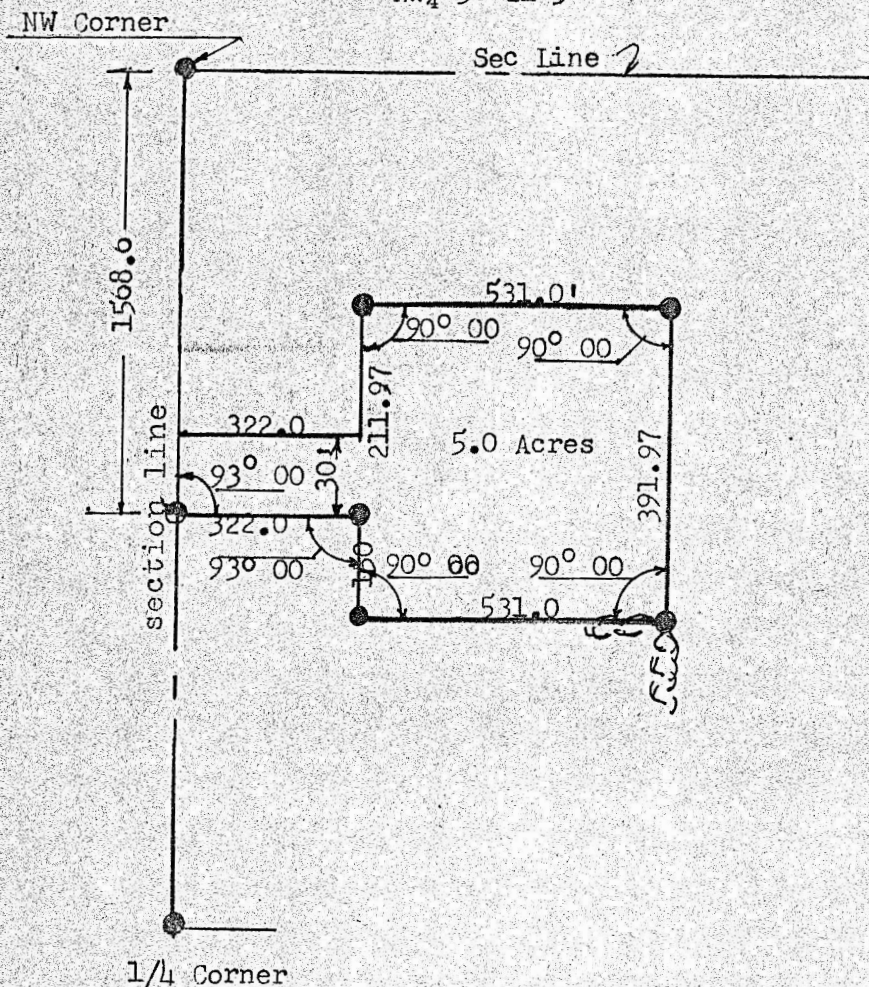


NW $\frac{1}{4}$  36-21-3



No scale

- 1/2" I.P. Set
- 60 D spike set

This survey called for by the Bacon Brothers McPherson, Kansas.

I, F.R. Rankin a licensed professional engineer of the State of Kansas  
 Hereby Certify that a survey was made under my supervision, described  
 as follows: Beginning 1568.6' south of the NW corner of Section 36-  
 Township 21 south; range 3 west, thence on interior angle of 93° 00'  
 East 322.0',-Thence on interior angle 93° 00' south 150.0',- Thence on  
 Interior angle 90° 00' east 531.0',- thence on interior angle 90° 00'  
 North 391.97',- Thence on interior angle 90° 00' West 531.0',-Thence  
 on interior angle 90° 00' south 211.97 to the north line of 30 roadway  
 thence on 87° 00' exterior angle west 322.0' to the west section line  
 thence south on section line 30.0' to the point of beginning. Said  
 tract contains 5.0 acres.

*F.R. Rankin* 7/5/1976  
 F.R. Rankin, E.  
 LICENSED  
 799  
 KANSAS  
 PROFESSIONAL ENGINEER

ENCLOSURE