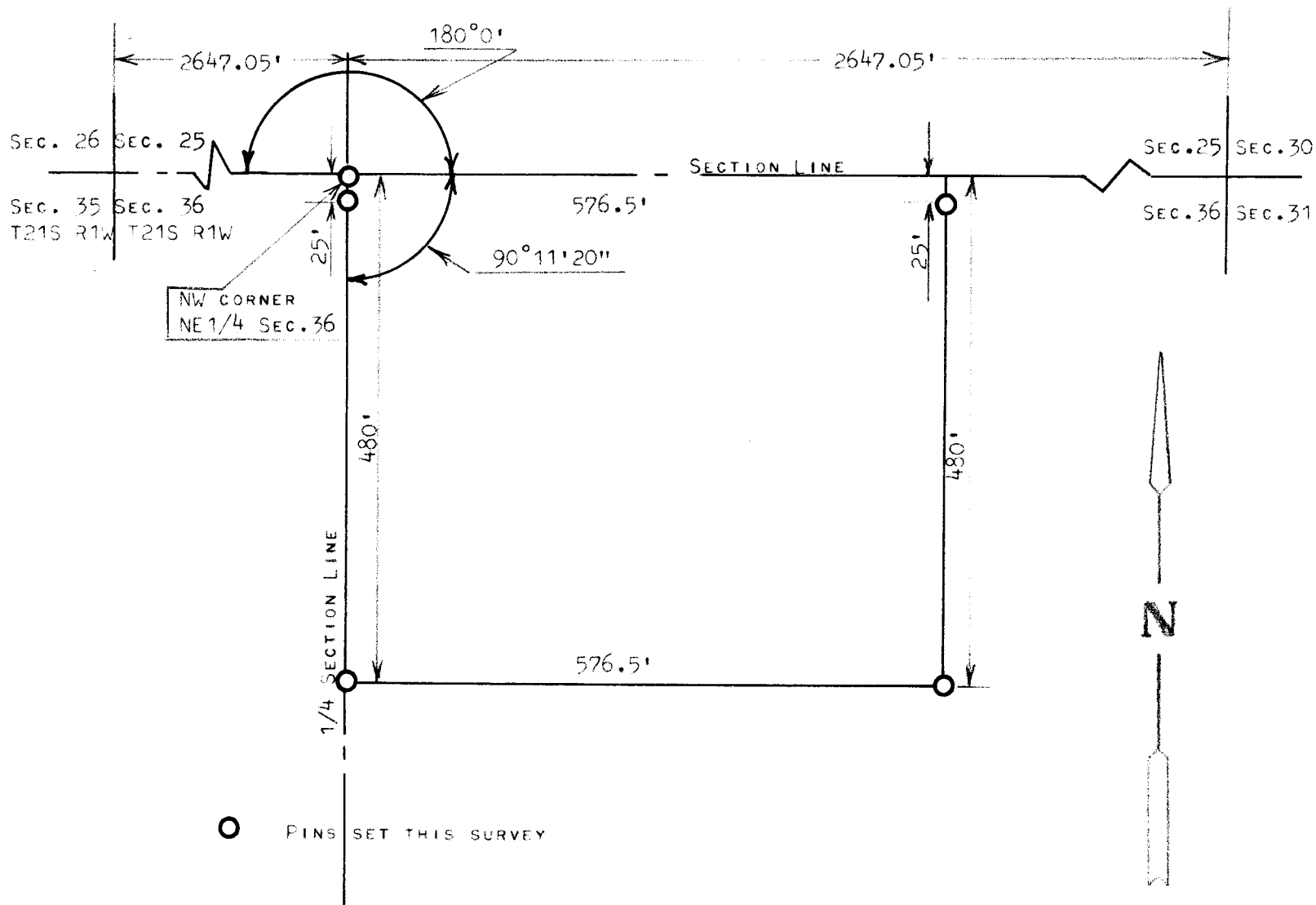


A SURVEY TRACT OF LAND IN THE
NE 1/4, SECTION 36, T21S R1W
COUNTY OF MCPHERSON, KANSAS



STATE OF KANSAS) SS
COUNTY OF MCPHERSON)

I, FRANCIS RANKIN, LICENSED PROFESSIONAL ENGINEER OF THE STATE OF KANSAS DO HEREBY CERTIFY THAT UNDER MY SUPERVISION A SURVEY WAS MADE IN THE NE 1/4 SECTION 36, T21S R1W OF THE 6TH P.M. AND DESCRIBED AS FOLLOWS;
BEGINNING THE NW CORNER OF THE NE 1/4 OF SAID SECTION 36, T21S R1W; THENCE SOUTH ON 1/4 SECTION LINE 480.0 FEET; THENCE EAST PARALLEL WITH SECTION LINE 576.5 FEET; THENCE NORTH TO SECTION LINE 480.0 FEET THENCE WEST ON SECTION LINE 576.5 FEET TO PLACE OF BEGINNING, SAID TRACT OF LAND CONTAINS 6.4 ACRES MORE OR LESS, AND THAT THE ACCOMPANYING PLAT IS A TRUE EXHIBIT OF SAID SURVEY AS FAR AS IT IS KNOWN TO ME.

SURVEY CALLED FOR BY LLOYD RODGERS

SIGNED THIS 8 DAY OF APRIL, 1968

Francis Rankin
FRANCIS RANKIN
PROFESSIONAL ENGINEER
MCPHERSON, KANS.

