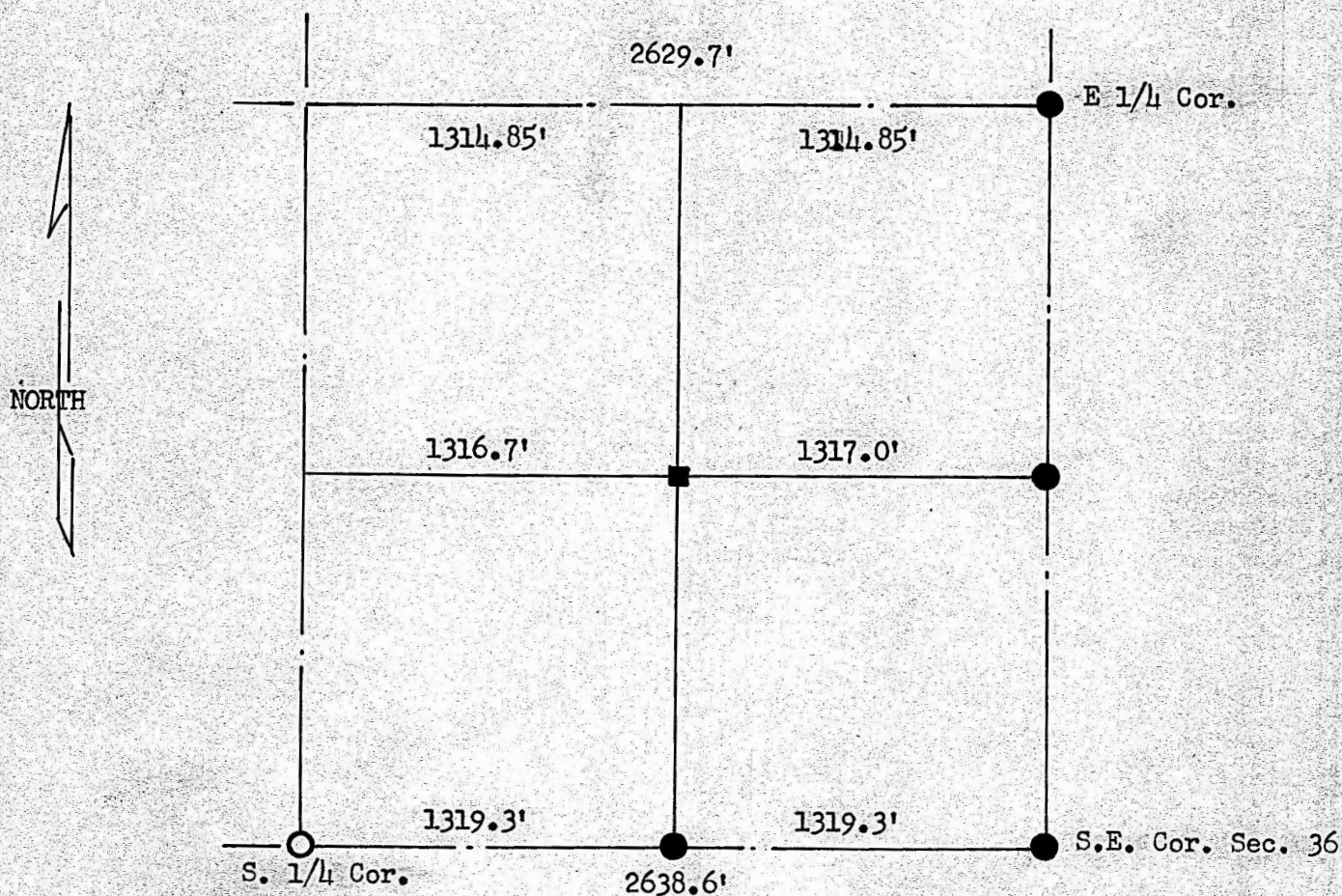


SURVEY IN THE S. E. 1/4
SECTION 36, T. 17 S.; R. 4 W.



- PIN PLACED ON SURVEY
- PIN IN PLACE
- WOODEN HUB

State of Kansas
County of McPherson, S. S.

I, Francis D. Wagner, County Engineer of McPherson County, Kansas, do hereby certify that I did cause to be done on the 22nd day of December 1954, a survey to establish the South 1/16 corner of the South East quarter of Section 36, T. 17 S.; R. 4 W. of the 6th P. M., also to establish the line between the East half and the West half of said 1/4 section, and that the accompanying plat is a true exhibit of said survey.

Francis D. Wagner

Francis D. Wagner
County Engineer
McPherson, Kansas

24th December, 1954