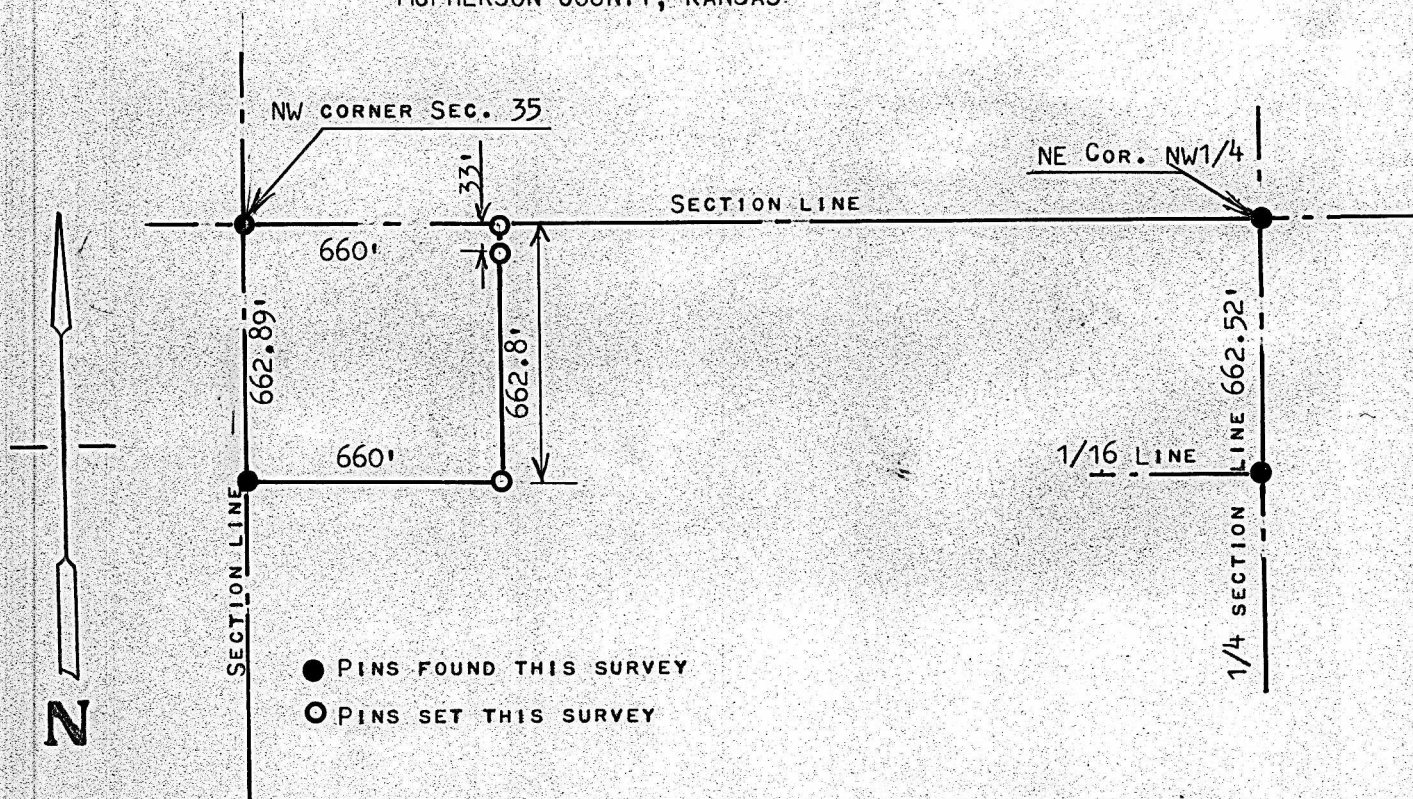


A SURVEY OF A TRACT OF LAND IN THE
NW1/4, SECTION 35, T21S, R5W
MCPHERSON COUNTY, KANSAS



STATE OF KANSAS)
COUNTY OF MCPHERSON) SS

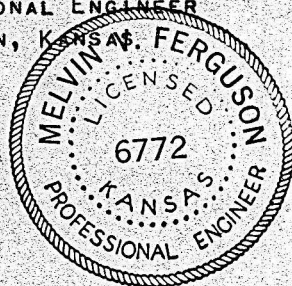
I, MELVIN FERGUSON, PROFESSIONAL ENGINEER OF THE STATE OF KANSAS DO HEREBY CERTIFY THAT UNDER MY SUPERVISION A SURVEY WAS MADE OF A TRACT OF LAND IN THE NW1/4, SECTION 35, T21S, R5W OF THE 6TH P.M. AND DESCRIBED AS FOLLOWS:

THE WEST 660 FEET OF THE NORTH 1/2, NORTH 1/2, NORTHWEST 1/4, OF SAID SECTION 35, T21S, R5W, SAID TRACT OF LAND CONTAINS 10.0 ACRES MORE OR LESS, AND THAT THE ACCOMPANYING PLAT IS A TRUE EXHIBIT OF SAID SURVEY AS FAR AS IT IS KNOWN TO ME.

SURVEY CALLED FOR BY SAM LEWIS

SIGNED THIS 6th DAY OF SEPTEMBER, 1977

Melvin Ferguson
MELVIN FERGUSON
PROFESSIONAL ENGINEER
MCPHERSON, KANSAS



MICROFILM