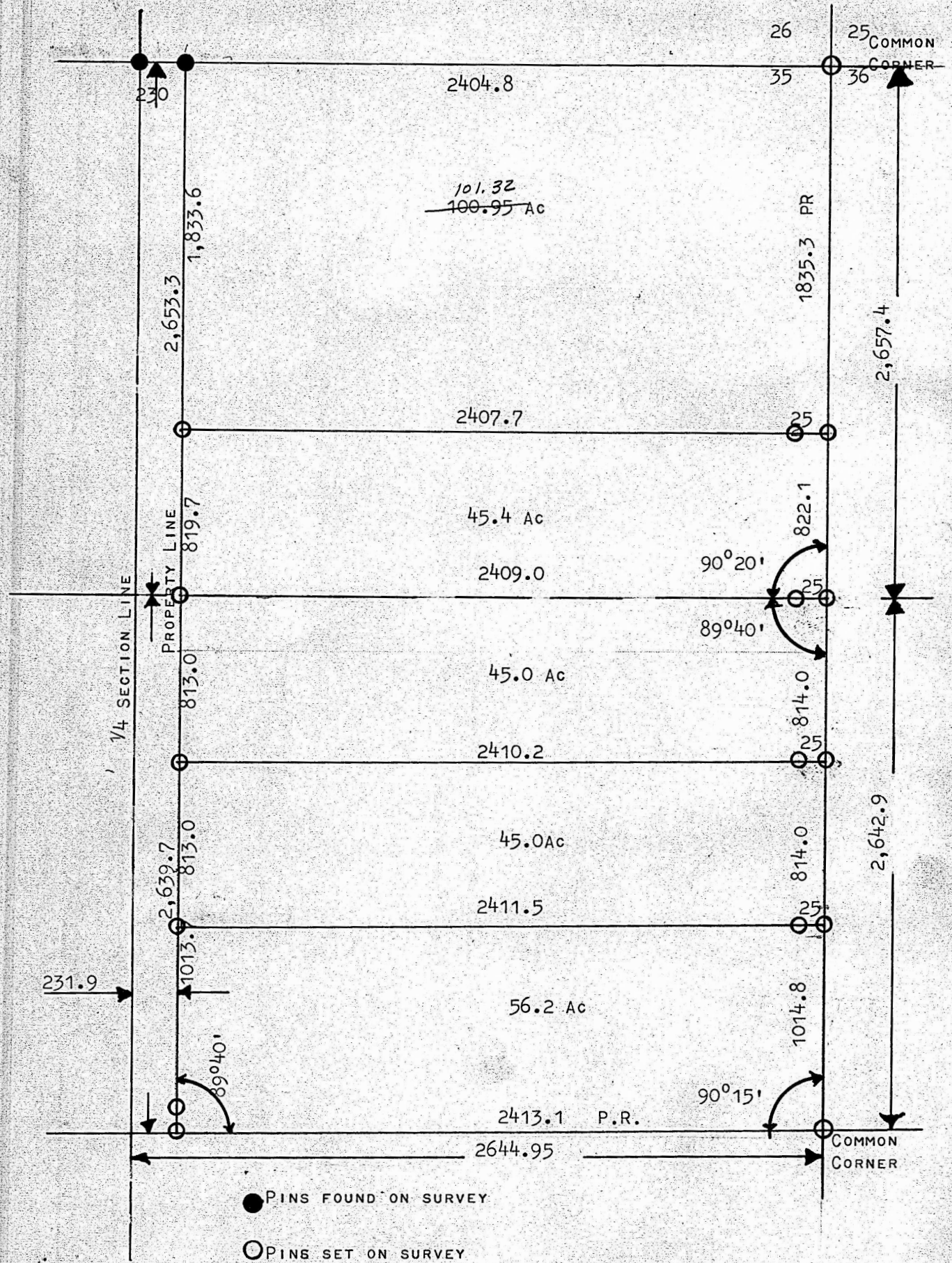


SURVEY OF A TRACT OF LAND
IN THE E¹/₂ SECTION 35-21-4
McPHERSON, KANSAS



STATE OF KANSAS)
COUNTY OF McPHERSON) SS

I, FRANCIS R. RANKIN, COUNTY ENGINEER OF McPHERSON, COUNTY KANSAS, DO HEREBY CERTIFY THAT UNDER MY SUPERVISION A SURVEY WAS MADE IN THE EAST 292.55 ACRES OF THE EAST ¹/₂ SECTION 35-T21s- R4W OF THE 6TH P.M. AND DESCRIBED AS FOLLOWS:

NORTH 100.95 ACRES AND THE SOUTH 45.4 ACRES OF THE EAST 146.35 ACRES OF THE NE¹/₄ SAID SECTION. THE NORTH 45 ACRES OF THE NORTH 90 ACRES OF THE EAST 146.20 ACRES OF THE SE¹/₄ OF SAID SECTION AND THE SOUTH 45 ACRES OF THE NORTH 90 ACRES OF THE EAST 164.20 ACRES OF THE SAID SE¹/₄.

I ALSO CERTIFY THAT THE ABOVE PLAT IS A TRUE EXHIBIT OF THE SURVEY AS FAR AS IT IS KNOWN TO ME.

SIGNED THIS 14 DAY OF JULY 1966

MICROFILM

