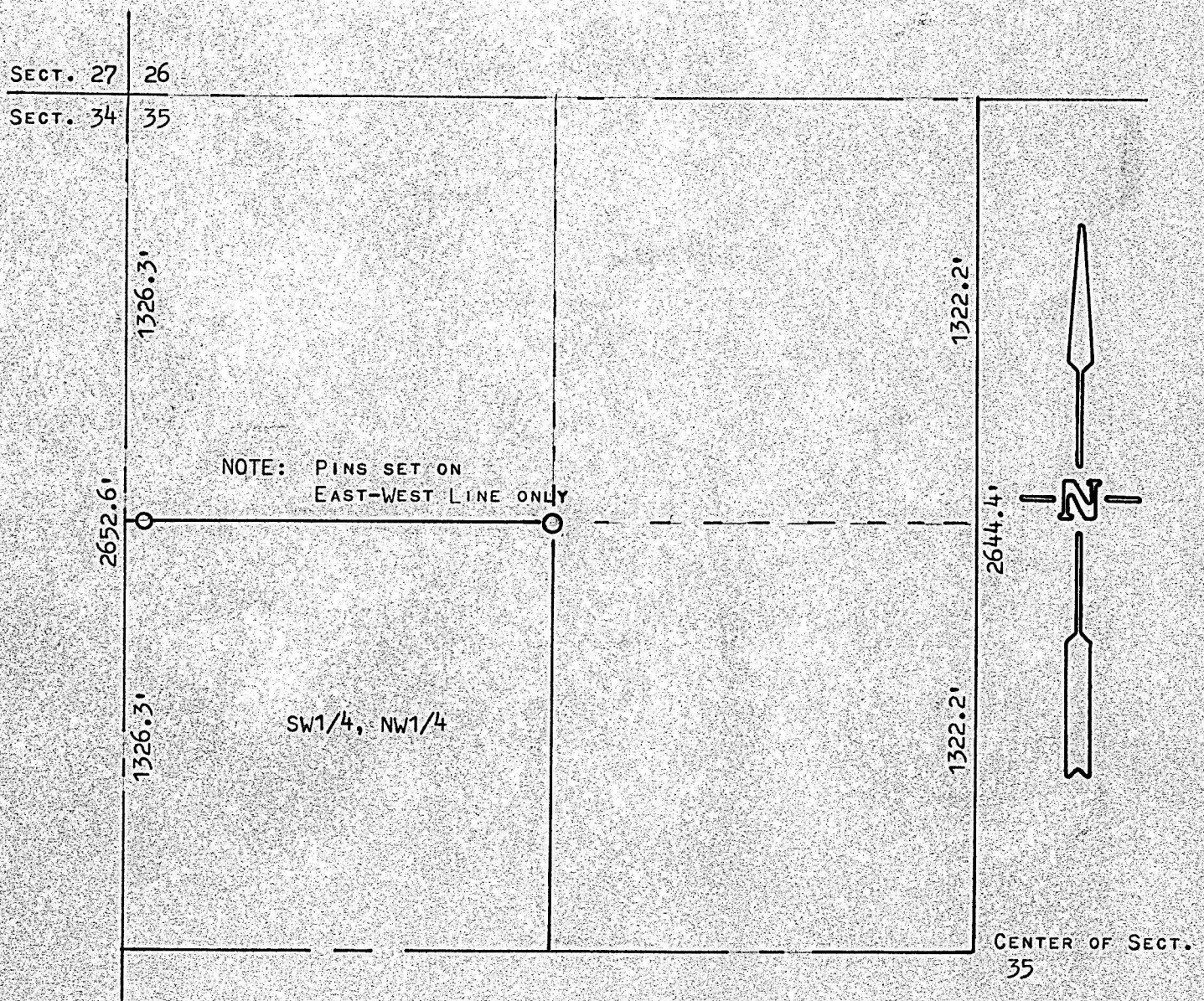


A SURVEY OF THE NORTH LINE OF THE SW1/4, NW1/4
SECTION 35, T21S- R3W
McPHERSON COUNTY, KANSAS



○ PINS SET THIS SURVEY

STATE OF KANSAS)
COUNTY OF McPHERSON)

I, FRANCIS RANKIN, COUNTY ENGINEER OF McPHERSON COUNTY, KANSAS,
DO HEREBY CERTIFY THAT UNDER MY SUPERVISION A SURVEY WAS MADE TO
DETERMINE THE NORTH LINE OF THE SW1/4, NW1/4 OF SECTION 35, T21S-
R3W OF THE 6TH P.M. AND THE ABOVE PLAT IS A TRUE EXHIBIT OF SAID
SURVEY AS FAR AS IT IS KNOWN TO ME.

SURVEY CALLED FOR BY DAVE STUCKY.

SIGNED ON THIS 29 DAY OF AUGUST, 1972.

F. R. Rankin
F. R. RANKIN
COUNTY ENGINEER
McPHERSON Co., KANSAS



MICROFILM

PLAT 2016