

Main Office
2908 North Plum Street
Hutchinson, KS 67502
Office: (620) 665-7032
Fax: (620) 663-7401



Garber Surveying Service, P.A.

Branch Offices
511 North Poplar Street
Newton, KS 67114
Office: (316) 283 - 5053
Fax: (316) 283 - 5073

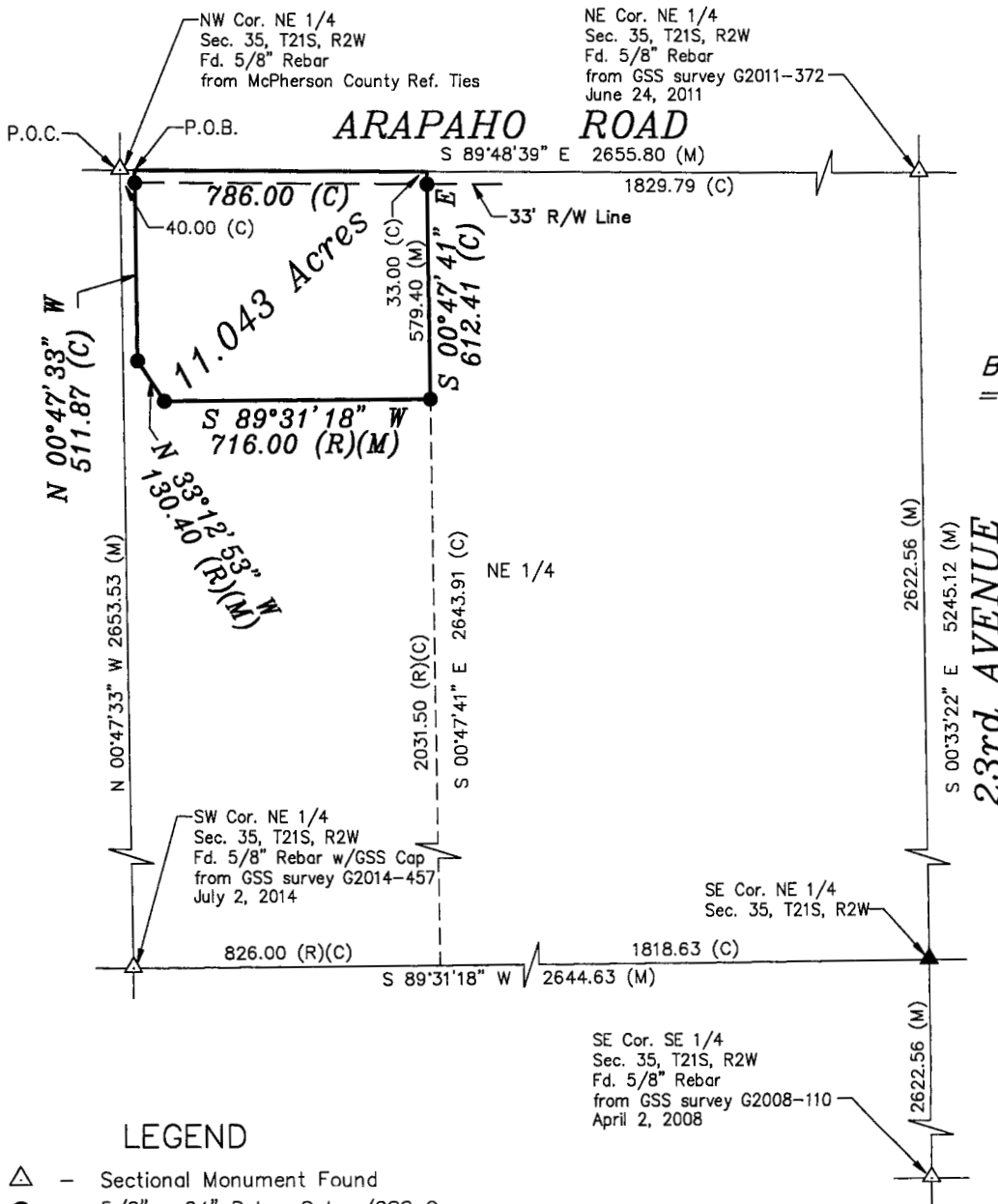
115 East Marlin, Suite 102
McPherson, KS. 67460
Office: (620) 241-4441
Fax: (620) 241-4458

SURVEY FOR: CITY OF MOUNDRIDGE

Project No. G2017-364

DESCRIPTION:

A portion of the Northeast Quarter of Section 35, Township 21 South, Range 2 West of the 6th Principal Meridian, McPherson County, Kansas described as follows:
Commencing at the Northwest Corner of the Northeast Quarter of Section 35, Township 21 South, Range 2 West of the 6th Principal Meridian; thence with a NAD 83 Kansas South Zone bearing of South 89°48'39" East along the North line of said Northeast Quarter 40.00 feet (per Record) for the point of beginning; thence continuing South 89°48'39" East along the North line of said Northeast Quarter 786.00 feet; thence South 00°47'41" East 612.41 feet to a point 2031.50 feet North of the South line of said Northeast Quarter (per Record); thence South 89°31'18" West parallel with the South line of said Northeast Quarter a measured distance of 716.00 feet (per Record); thence North 33°12'53" West 130.40 feet (per Record); thence North 00°47'33" West parallel with the West line of said Northeast Quarter a measured distance of 511.87 feet (previously Recorded as 518.00 feet more or less) to the point of beginning, containing 11.043 Acres, subject to a road Right-of-Way easement across the North 33.00 feet thereof and any other easements of record.



Scale: 1"=500'
BASIS OF BEARING
= NAD 83 KANSAS
SOUTH ZONE

LEGEND

- △ - Sectional Monument Found
- - 5/8" x 24" Rebar Set w/GSS Cap
- (C) - Calculated
- (M) - Measured
- (R) - Record measurement
- P.O.B. - Point of Beginning
- P.O.C. - Point of Commencement

DATE OF FIELD WORK: 6/20/2017

SURVEYOR'S CERTIFICATE:

I hereby certify this plat to be a true, correct and complete representation of the property described above as surveyed under my supervision.
Dated: 6/26/2017

Copyright © 2015 Garber Surveying Service, P.A.

Daniel E. Garber LS #683

