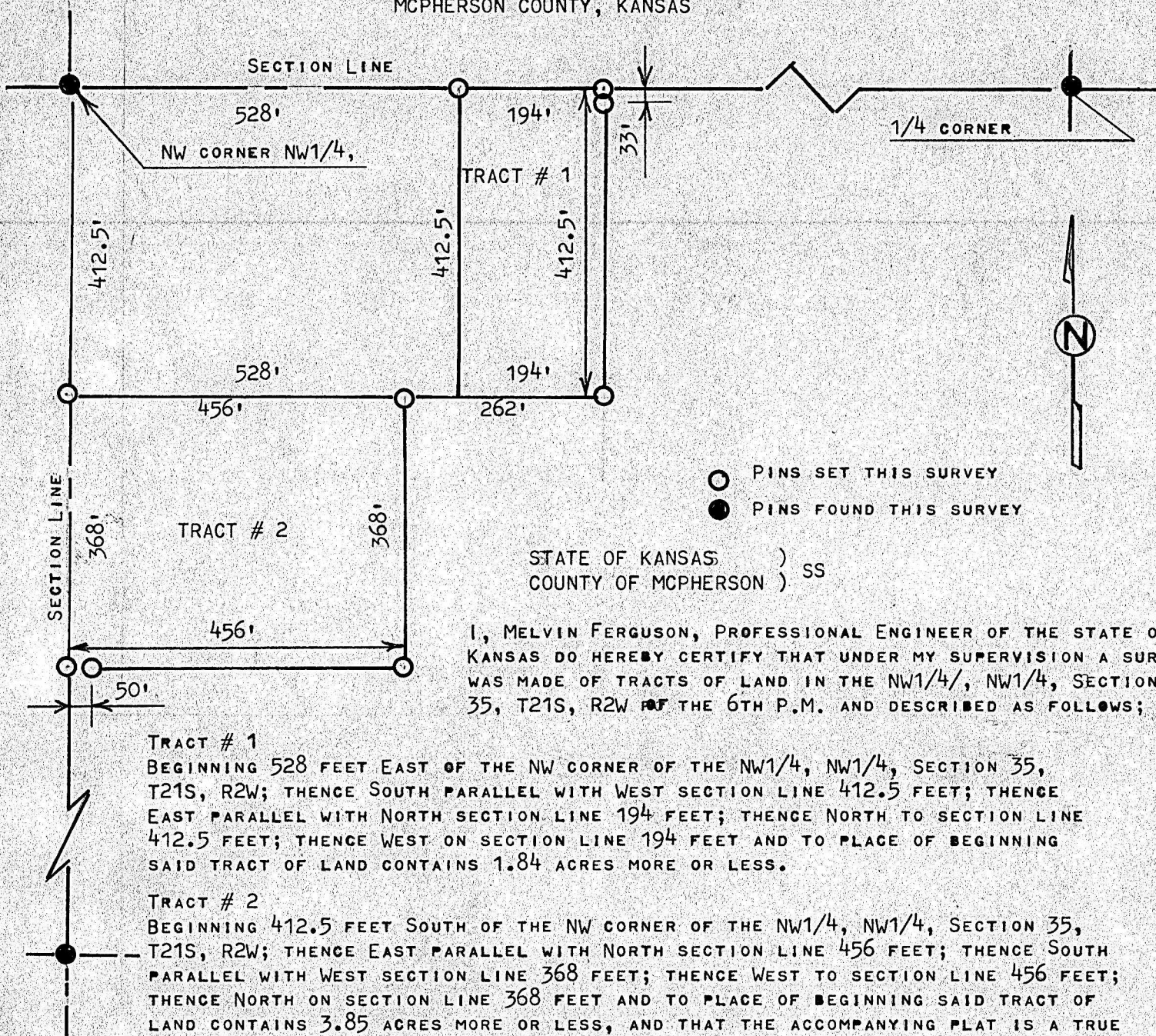


A SURVEY OF TRACTS OF LAND IN THE
NW1/4, NW1/4, SECTION 35, T21S, R2W
MCPHERSON COUNTY, KANSAS



SURVEY CALLED FOR BY MEMORIAL HOME (DAVID SCHRAG)

SIGNED ON THIS DAY OF 26th FEBRUARY, 1981

Melvin Ferguson
MELVIN FERGUSON
PROFESSIONAL ENGINEER
MCPHERSON, KANSAS

