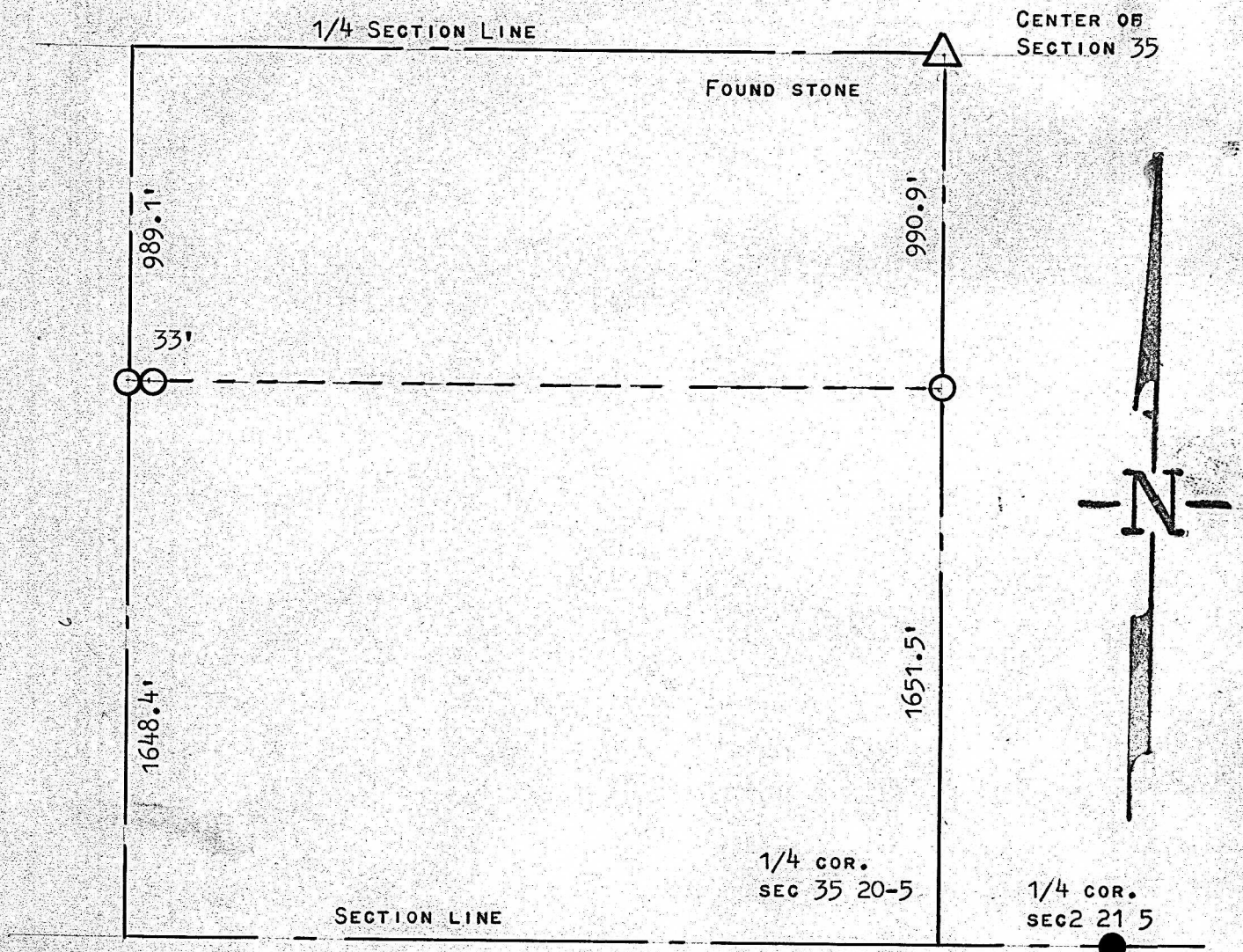


A SURVEY IN THE SW 1/4  
SECTION 35 T20 R5W



- PINS SET THIS SURVEY
- PINS FOUND THIS SURVEY

STATE OF KANSAS )  
COUNTY OF MCPHERSON) SS

I, FRANCIS RANKIN, PROFESSIONAL ENGINEER OF THE STATE OF KANSAS, DO HEREBY CERTIFY THAT UNDER MY SUPERVISION A SURVEY WAS MADE OF THE NORTH 60 ACRES AND THE SOUTH 100 ACRES SECTION 35, T20S-R5W OF THE 6TH P.M. AND THAT THE ACCOMPANYING PLAT IS A TRUE EXHIBIT OF SAID SURVEY AS FAR AS IT IS KNOWN TO ME.

NOTE: PINS WERE SET BY THE EXISTING BOUNDRY LINES.

SURVEY CALLED FOR BY DALE ZIMMERMAN

SIGNED THIS 12 DAY OF MARCH, 1965

*Francis Rankin*  
FRANCIS RANKIN  
PROFESSIONAL ENGINEER  
MCPHERSON, KANSAS  
LICENSED  
799  
KANSAS  
PROFESSIONAL ENGINEER

MICROFILM