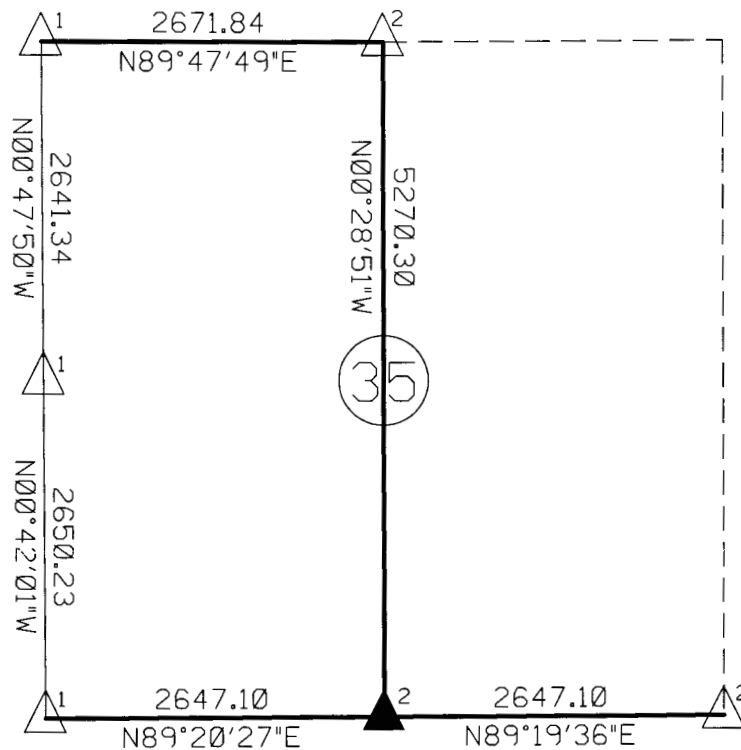


Project Coordinates on Section Corners
 Coords. x 0.99988685 = Kansas South State Plane Coordinates
 NAD 83 (1997 Adjustment)

Pt.	Northing	Easting	Description
35400	1899143.845	1533129.708	N 1/4 Cor. Sec. 35, T 20 S, R 4 W
35700	1893904.838	1535820.866	SE Cor. Sec. 35, T 20 S, R 4 W
35800	1893873.729	1533173.947	S 1/4 Cor. Sec. 35, T 20 S, R 4 W



Twp. 20 S, Rng. 4 W

I hereby certify that this drawing is a true representation of a survey conducted by the Kansas Department of Transportation for project 61-59 K-8253-01, completed April 2005, in McPherson County, Kansas.

KANSAS DEPT. OF TRANSPORTATION

NORTH



LEGEND

No Scale
 Grid Bearings
 Δ^1 = Corners used on KDOT Survey 61-59 K-8253-01 dated August 2004
 Δ^2 = Found, See Filed Land Survey Reference Reports for Origin/Methods
 \blacktriangle^2 = Set 1/2" x 24" Rebar w/ KDOT Alum. Cap, See Filed Land Survey Reference Reports for Origin/Methods
 — = Measured Values from this Survey
 — = Measured Values from KDOT Survey 61-59 K-8253-01 dated August 2004

If the surveyor's signature is not blue colored, the drawing is a copy that should be assumed to contain unauthorized alterations. The certification contained on this document shall not apply to any copies.

Larry Lee Moore
 by Larry Lee Moore
 LS-1174
 4-18-05
 KANSAS
 LAND SURVEYOR