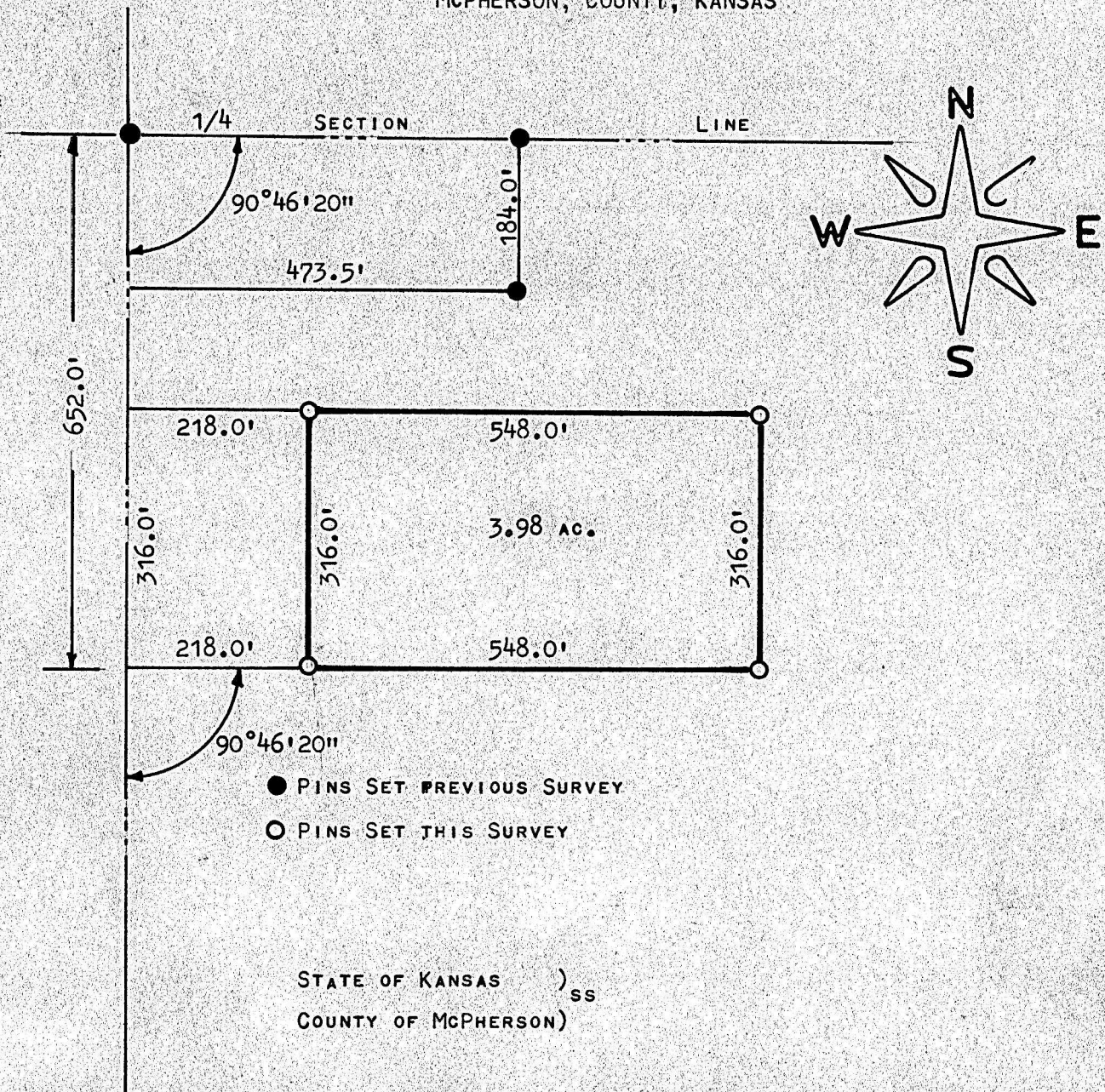


TRACT OF LAND IN THE N1/2, SW1/4
SECTION 35, T20S - R2W
McPHERSON, COUNTY, KANSAS



I, F.R. RANKIN, COUNTY ENGINEER OF McPHERSON, KANSAS, DO HEREBY CERTIFY THAT UNDER MY SUPERVISION A SURVEY WAS MADE IN THE N1/2, SW1/4 OF SECTION 35, T20S - R2W OF THE 6TH P.M. AND DESCRIBED AS FOLLOWS;

COMMENCING AT THE NW CORNER OF THE SW1/4 OF SECTION 35, THENCE SOUTH 652 FEET, THENCE EAST 218 FEET TO A PLACE OF BEGINNING, THENCE EAST 548 FEET, THENCE NORTH 316 FEET, THENCE WEST 548 FEET, THENCE SOUTH 316 FEET TO THE PLACE OF BEGINNING.

THE LAND HEREIN DESCRIBED CONTAINS 3.98 ACRES MORE OR LESS AND THE ABOVE PLAT IS A TRUE EXHIBIT OF SAID SURVEY AS FAR AS IT IS KNOWN TO ME.

SURVEY CALLED FOR BY FRED BECKER.

SIGNED THIS 24 DAY OF FEBRUARY, 1970.

F. R. Rankin
F. R. RANKIN
COUNTY ENGINEER
McPHERSON COUNTY, KANSAS
PROFESSIONAL ENGINEER