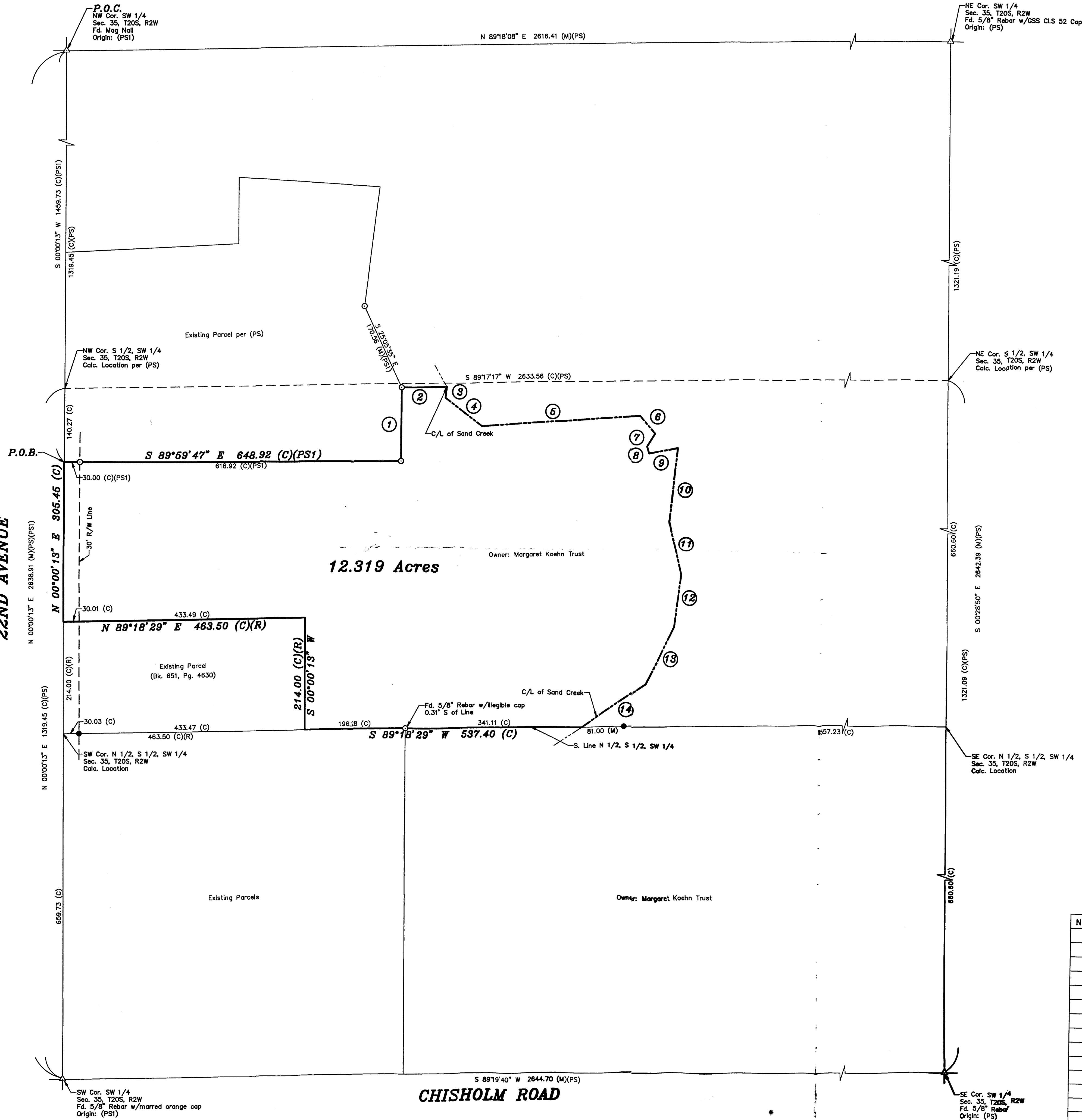
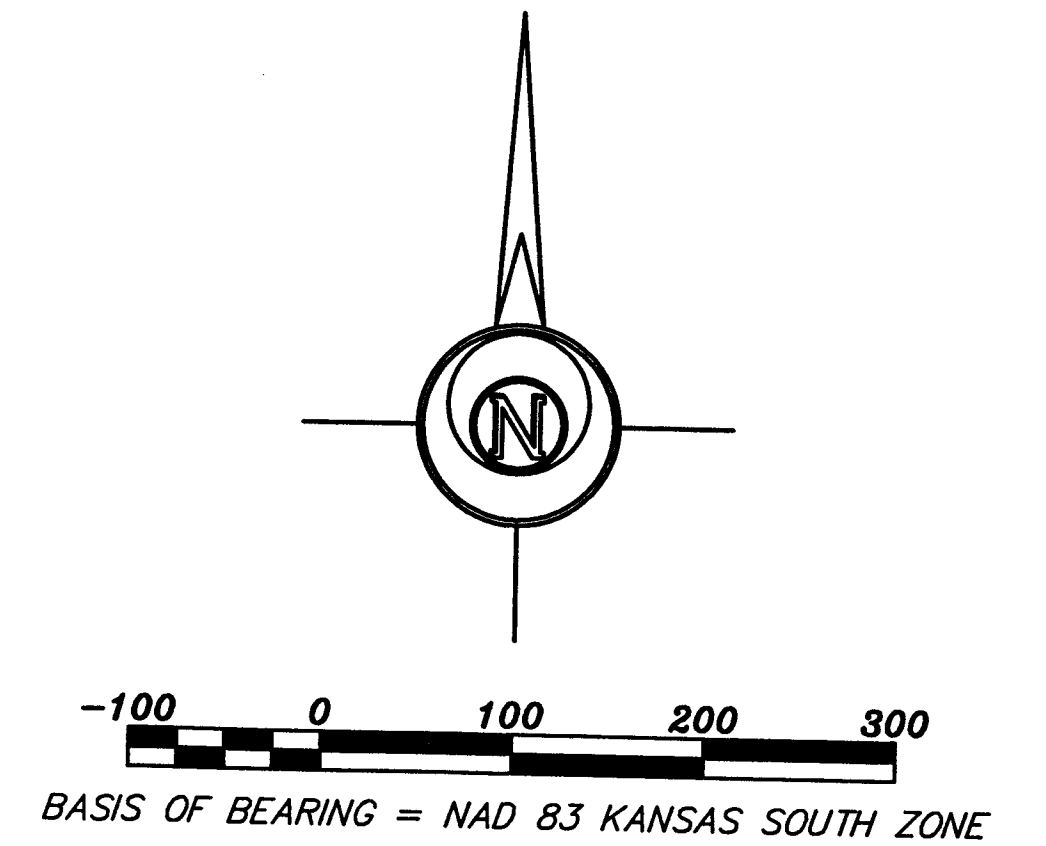


Copyright © 2019 Garber Surveying Service, P.A. Saved 3/21/2019 4:00:09 PM by KZOOK
Plot Date & Time Thursday, March 21, 2019 4:00:52 PM Dwg Path C:\LDD\GSSFILES\2019\20190133M.dwg\20190133.kwE

22ND AVENUE



- LEGEND**
- △ - Sectional Monument Found
 - - Fd. 5/8" Rebar w/GSS CLS 52 Cap unless otherwise noted
 - - 5/8" x 24" Iron Rebar Set w/GSS CLS 52 Cap
 - (C) - Calculated
 - (M) - Measured
 - (PS) - Previous Survey GSS Project #2012-651
 - (PS1) - Previous Survey GSS Project #2016-626
 - (R) - Record measurement
 - P.O.B. - Point of Beginning
 - P.O.C. - Point of Commencement



DESCRIPTION:

A portion of the Southwest Quarter of Section 35, Township 20 South, Range 2 West of the 6th Principal Meridian, McPherson County, Kansas described as follows:

Commencing at the Northwest corner of said Southwest Quarter; thence on a NAD 83 Kansas South Zone bearing of South 00°00'13" West on the West line of said Southwest Quarter a distance of 1459.73 feet (Record) to the point of beginning; thence South 89°59'47" East perpendicular to said West line a distance of 648.92 feet (Record); thence North 00°00'13" East parallel with said West line a distance of 141.08 (Record); thence North 89°17'17" East a distance of 87.00 feet to the centerline of Sand Creek; thence along the centerline of said Sand Creek for the next 12 courses:

South 06°40'21" West a distance of 20.55 feet;
South 52°11'10" East a distance of 89.44 feet;
North 86°13'50" East a distance of 304.90 feet;
South 41°16'05" East a distance of 44.15 feet;
South 31°41'25" West a distance of 28.81 feet;
South 16°11'25" East a distance of 13.84 feet;
North 79°19'00" East a distance of 56.20 feet;
South 05°58'52" West a distance of 141.57 feet;
South 13°16'59" East a distance of 105.61 feet;
South 08°01'37" West a distance of 99.43 feet;
South 26°33'56" West a distance of 121.28 feet;
South 55°43'47" West a distance of 147.76 feet to the South line of the North Half of the South Half of

said Southwest Quarter; thence South 89°18'29" West on said South line a distance of 537.40 feet to the Southeast corner of a parcel described in Book 651, Page 4630 at the McPherson County Register of Deeds Office; thence North 00°00'13" East on the East line of said parcel a distance of 214.00 feet to the Northeast corner of said parcel; thence South 89°18'29" West on the North line of said parcel a distance of 463.50 feet to the West line of said Southwest Quarter; thence North 00°00'13" East on said West line a distance of 305.45 feet to the point of beginning.

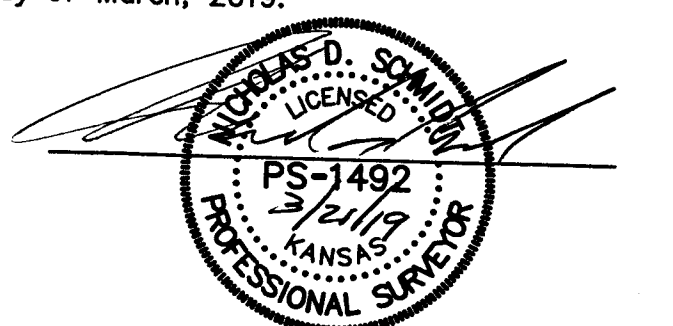
Containing 12.319 Acres and subject to a road right of way easement across the West 30.00 feet thereof, and any other easements or restrictions of record.

LINE TABLE

NUMBER	BEARING	DISTANCE
1	N 00°00'13" E	141.08 (M)(PS1)
2	N 89°17'17" E	87.00 (M)
3	S 06°40'21" W	20.55 (M)
4	S 52°11'10" E	89.44 (M)
5	N 86°13'50" E	304.90 (M)
6	S 41°16'05" E	44.15 (M)
7	S 31°41'25" W	28.81 (M)
8	S 16°11'25" E	13.84 (M)
9	N 79°19'00" E	56.20 (M)
10	S 05°58'52" W	141.57 (M)
11	S 13°16'59" E	105.61 (M)
12	S 08°01'37" W	99.43 (M)
13	S 26°33'56" W	121.28 (M)
14	S 55°43'47" W	147.76 (M)

SURVEYOR'S CERTIFICATE:

I hereby certify this plat to be a true, correct and complete representation of the property described hereon, as surveyed under my supervision, this 21st day of March, 2019.



Prepared For:		Description:	
WHITNEY UNRUH		A PORTION OF THE SW 1/4 SECTION 35, T20S, R2W McPHERSON COUNTY, KANSAS	
Prepared By:		Garber Surveying Service, P.A.	
GSS		HUTCHINSON (Main Office) 2908 North Plum St. 67502 Ph. 620-465-7032 Fax 620-463-7401	
		McPHERSON (Branch Office) 115 East Marlin 67460 Ph. 620-241-4441 Fax 620-241-4458	
		NEWTON (Branch Office) 511 North Poplar St. 67114 Ph. 316-283-5053 Fax 316-283-5073	
		MANHATTAN (Branch Office) 3226 Kimball Ave Ste. #2 66503 Ph. 785-320-4810	
Drawn By:	KDZ	Scale: 1"=100'	Date of Field Work: March 7, 2019
Checked By:	NDS	Date: 03/21/2019	Sheet 1 of 1 Sheet(s)
			Job No: G2019-133