



**511 North Poplar St.  
Newton, Kansas 67114  
Phone 316 283-5053 • FAX 316 283-5073**

**115 East Marlin  
McPherson, Kansas 67460  
Phone 620 241-4441 • FAX 620 241-4458**

**Project No. G2016-626**

Commencing at the Northwest corner of said Southwest Quarter; thence on a NAD 83 Kansas South Zone bearing of South 00°00'13" West on the West line of said Southwest Quarter a distance of 659.73 feet to the Northwest corner of the South Half of the Northwest Quarter of said Southwest Quarter; thence continuing South 00°00'13" West on said West line a distance of 400.00 feet (Record) to the point of beginning; thence North 87°11'52" East a distance of 332.21 feet (Record); thence North 00°01'38" East a distance of 128.00 feet (Record); thence South 85°48'14" East a distance of 272.77 feet (Record); thence South 06°48'50" West a distance of 230.41 feet; thence South 25°05'35" East a distance of 170.56 feet; thence South 00°00'13" West parallel with said West line a distance of 141.08 feet; thence North 89°59'47" West perpendicular to said West line a distance of 648.92 feet to said West line; thence North 00°00'13" East on said West line a distance of 400.00 feet to the point of beginning.

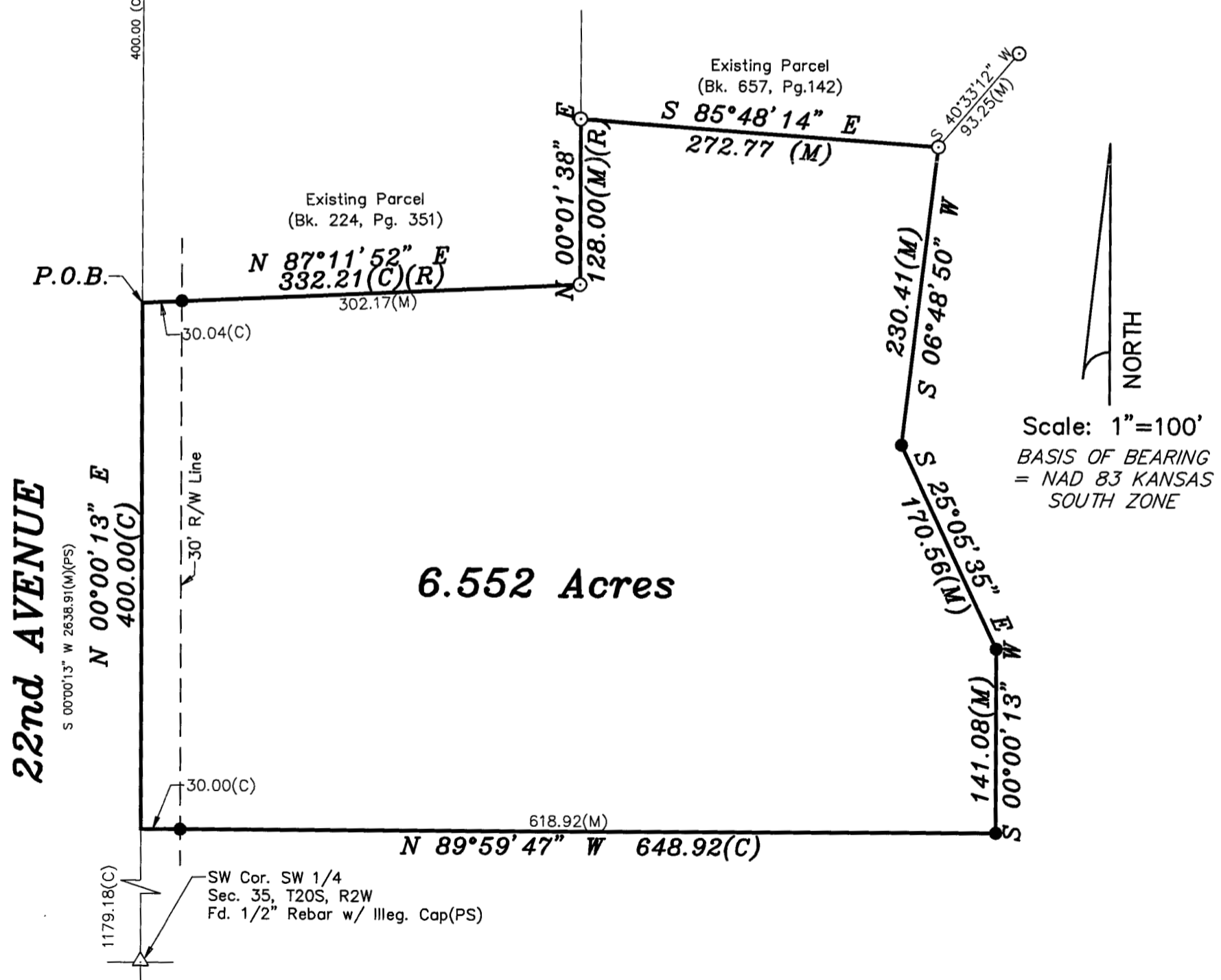
*P.O.C.*

659.73(C)(PS)

NW Cor. SW 1/4  
Sec. 35, T20S, R2W  
Fd. Mag Nail(PS)

NW Cor. S1/2 NW 1/4 SW 1/4  
Sec. 35, T20S, R2W  
Calc. from (PS)

- △ - Sectional Monument Found
- - Fd. 5/8" Rebar w/GSS Cap
- - 5/8" x 24" Iron Rebar Set w/G.S.S. Cap
- (C) - Calculated
- (M) - Measured
- (PS) - Previous Survey, GSS Project #G2012-651
- (R) - Record measurement
- P.O.B. - Point of Beginning
- P.O.C. - Point of Commencement



Dated: November 21, 2016

Nicholas D. Schmidt LS #1492