

NW CORNER SW 1/4
SECTION 35, T19S, R5W
FOUND 1/2" REBAR WITH
ILLEGIBLE CAP 0.5 DEEP
FROM COUNTY TIES

NE CORNER SW 1/4
SECTION 35, T19S, R5W

NE CORNER NW 1/4
SECTION 35, T19S, R5W
FOUND 3/4" REBAR
FROM COUNTY TIES

NE CORNER SE 1/4
SECTION 35, T19S, R5W
FOUND 1/2" REBAR
FROM COUNTY TIES

SE CORNER SE 1/4
SECTION 35, T19S, R5W
FOUND 1/2" REBAR 1.0 DEEP
FROM COUNTY TIES

SW CORNER SW 1/4
SECTION 35, T19S, R5W
FOUND P-K NAIL OVER
RAILROAD SPIKE 0.5 DEEP
FROM COUNTY TIES

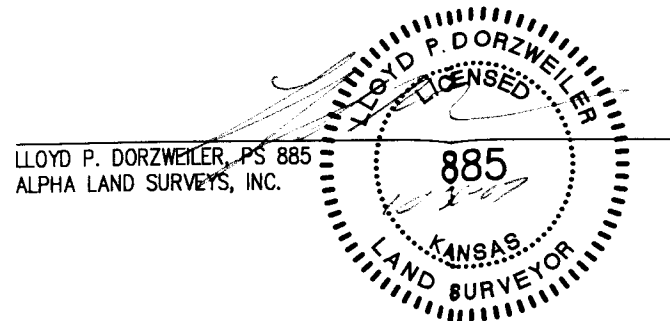
SW CORNER SE 1/4
SECTION 35, T19S, R5W

DESCRIPTION:
THE SOUTHEAST AND SOUTHWEST QUARTERS OF SECTION 35, TOWNSHIP 19 SOUTH, RANGE 5 WEST OF THE 6TH
PRINCIPAL MERIDIAN, MOHPERSON COUNTY, KANSAS.

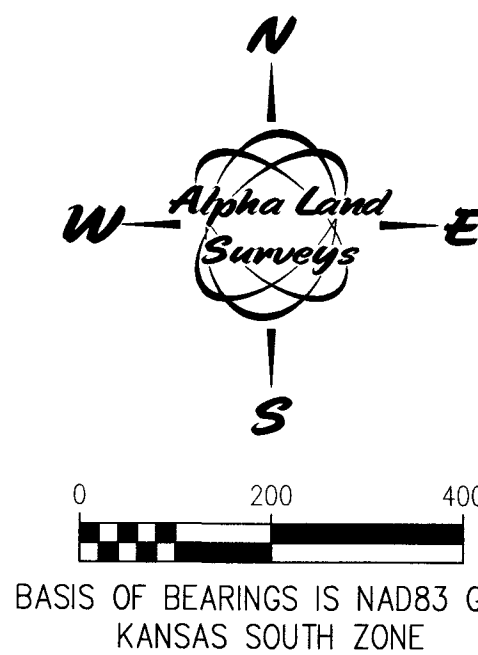
GENERAL NOTES:
1) SECTION CORNER REFERENCE TIES FILED WITH THE KANSAS STATE HISTORICAL SOCIETY AND THE MOHPERSON
COUNTY PUBLIC WORKS DEPARTMENT AS REQUIRED BY KSA 1987 SUPP. 58-2011.
2) NO TITLEWORK WAS PROVIDED BY CLIENT FOR SUBJECT PROPERTY. ALL EASEMENTS AND RIGHTS-OF-WAYS
AFFECTING SUBJECT PROPERTY MAY NOT BE SHOWN.

SURVEYORS CERTIFICATE:
I HEREBY CERTIFY THAT THIS SURVEY WAS MADE UNDER MY SUPERVISION ON OCTOBER 18, 2017.

LLOYD P. DORZWEILER, PS 885
ALPHA LAND SURVEYS, INC.



- LEGEND
- - FOUND SURVEY MONUMENT
 - △ - FOUND SECTION SUBDIVISION CORNER
 - ▽ - FOUND "X" CUT IN CONCRETE
 - - SET 1/2"x24" REBAR WITH CAP STAMPED "ALPHA QLS-184"
 - - SET "X" CUT IN CONCRETE
 - - RIGHT-OF-WAY MARKER
 - R - RECORD
 - M - MEASURED
 - C - CALCULATED MEASURE
 - PRO - PRORATED
 - POB - POINT OF BEGINNING



S. 1/2 Sec 35, T19S-R5W

SURVEY FOR:

NISLY AUCTION

SURVEY TYPE:

BOUNDARY

Alpha Land Surveys, Inc.
216 WEST SECOND AVENUE
HUTCHINSON, KANSAS 67501
PH: (620) 728-0012 FAX: (620) 728-0413

SURVEY DATE: 10/18/2017 PLOT DATE: 10/26/2017

DRAWN BY: RB PROJ. NO.: 1702168

CHECKED BY: LPD SHEET 1 OF 1