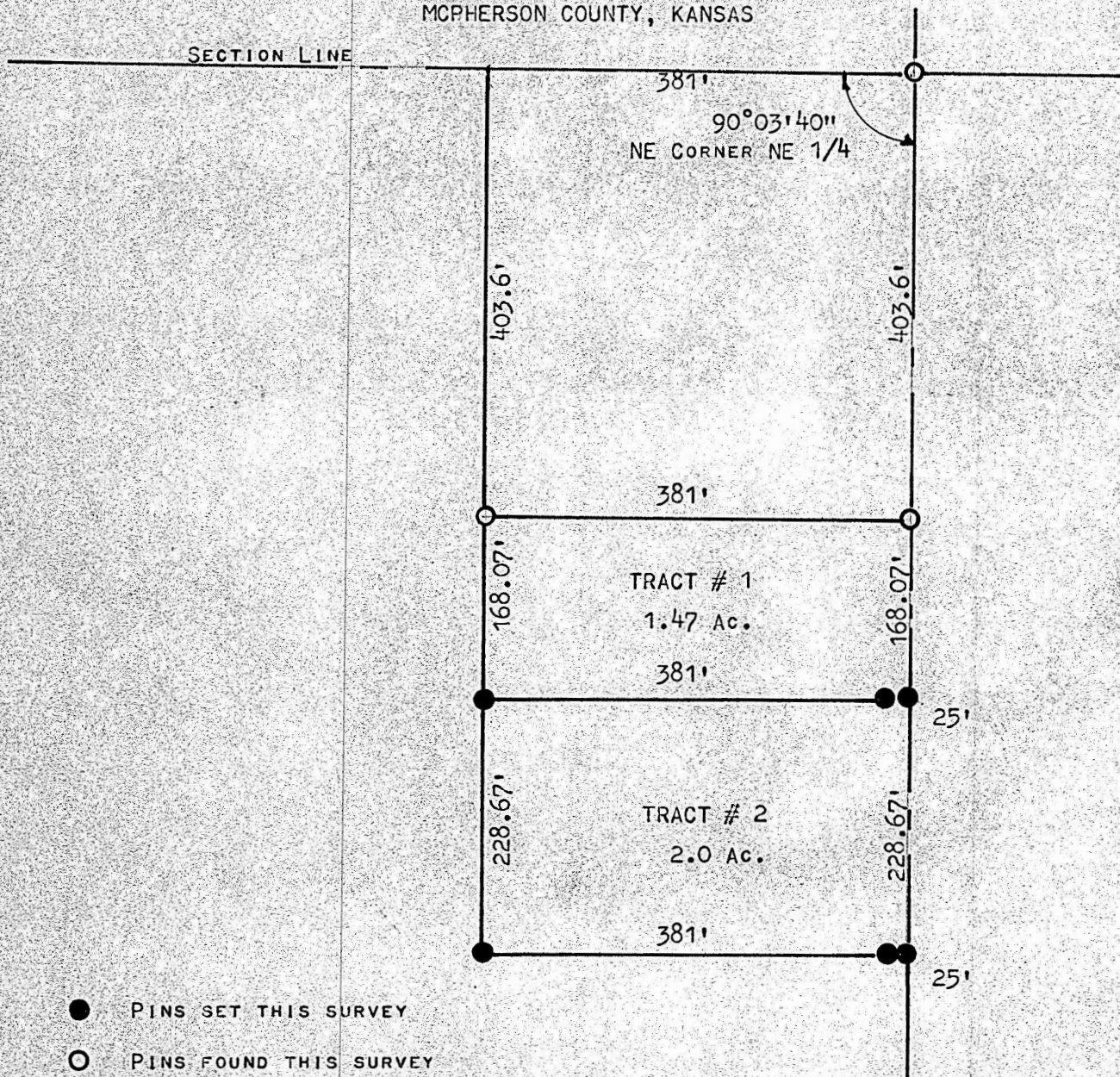


A SURVEY OF A TRACT OF LAND IN THE  
NE1/4, SECTION 35, T19S, R4W  
MCIPHERSON COUNTY, KANSAS



- PINS SET THIS SURVEY
- PINS FOUND THIS SURVEY

STATE OF KANSAS )  
COUNTY OF MCIPHERSON ) SS.

I, FRANCIS RANKIN, PROFESSIONAL ENGINEER OF THE STATE OF KANSAS DO  
HEREBY CERTIFY THAT UNDER MY SUPERVISION A SURVEY WAS MADE IN THE  
NE 1/4, SECTION 35, T19S, R4W OF THE 6TH P.M. AND DESCRIBED AS FOLLOWS:  
TRACT #1 BEGINNING 403.6 FEET SOUTH OF THE NE CORNER OF SAID NE 1/4, SECTION 35,  
T19S, R4W; THENCE WEST PARALLEL WITH SECTION LINE 381.0 FEET; THENCE  
SOUTH 168.07 FEET; THENCE EAST TO SECTION LINE 381.0 FEET; THENCE NORTH  
168.07 FEET AND TO PLACE OF BEGINNING SAID TRACT OF LAND CONTAINS 1.47  
ACRES MORE OR LESS

TRACT# 2  
BEGINNING 571.67 FEET SOUTH OF THE NE CORNER OF SAID NE 1/4, SECTION 35,  
T19S, R4W; THENCE WEST PARALLEL WITH SECTION LINE 381.0 FEET; THENCE  
SOUTH 228.67 FEET; THENCE EAST TO SECTION LINE 381.0 FEET; THENCE NORTH  
228.67 FEET TO PLACE OF BEGINNING SAID TRACT OF LAND CONTAINS 2.0 ACRES  
MORE OR LESS, AND THAT THE ACCOMPANYING PLAT IS A TRUE EXHIBIT OF SAID  
SURVEY AS FAR AS IT IS KNOWN TO ME.

SURVEY CALLED FOR BY DUANE KAUFMAN

SIGNED THIS DAY OF 29 NOVEMBER, 1971

*Francis Rankin*  
FRANCIS RANKIN  
PROFESSIONAL ENGINEER  
MCIPHERSON, KANSAS



MICROFILM

MICROFILM