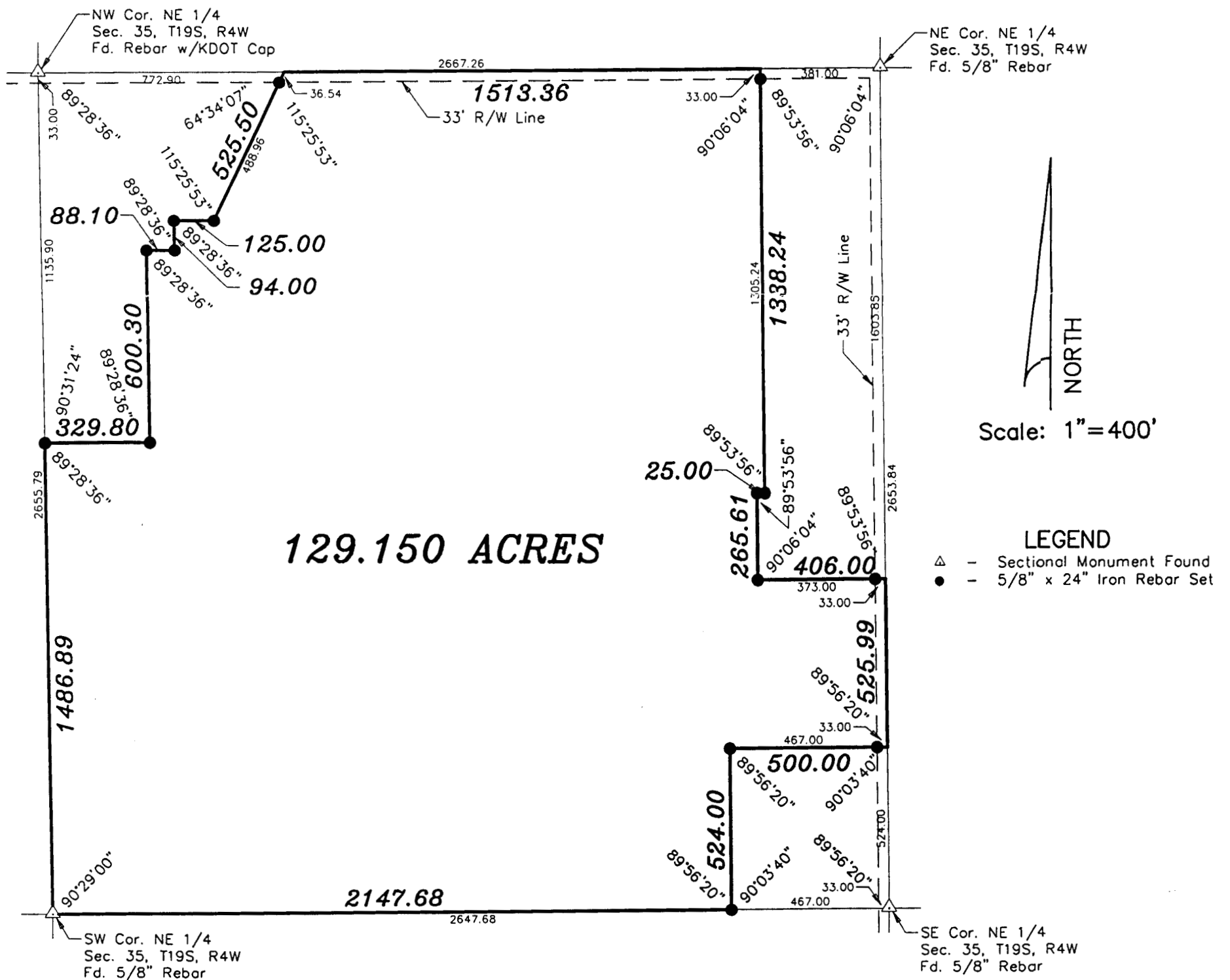




SURVEY FOR: WILLIAM SCHRAGG

DESCRIPTION: A portion of the Northeast Quarter of Section 35, Township 19, South, Range 4 West of the 6th Principal Meridian described as follows:

Commencing at the Northeast corner of the Northeast Quarter of Section 35, Township 19 South, Range 4 West of the 6th Principal Meridian; thence West along the North line of said Northeast Quarter 381.00 feet for the point of beginning; thence with a deflection angle 90°06'04" left-South parallel with the East line of said Northeast Quarter 1338.24 feet; thence with a deflection angle 90°06'04" right-West parallel with the North line of said Northeast Quarter 25.00 feet; thence with a deflection angle 90°06'04" left-South parallel with the East line of said Northeast Quarter 265.61 feet; thence with a deflection angle 89°53'56" left-East 406.00 feet to the East line of said Northeast Quarter; thence with a deflection angle 89°53'56" right-South along the East line of said Northeast Quarter 525.99 feet; thence with a deflection angle 90°03'40" right-West parallel with the South line of said Northeast Quarter 500.00 feet; thence with a deflection angle 90°03'40" left-South parallel with the East line of said Northeast Quarter 524.00 feet to the South line of said Northeast Quarter; thence with a deflection angle 90°03'40" right-West along the South line of said Northeast Quarter 2147.68 feet to the Southwest corner of said Northeast Quarter; thence with a deflection angle 89°31'00" right-North along the West line of said Northeast Quarter 1486.89 feet to a point that is 1168.90 feet South of the Northwest corner of said Northeast Quarter; thence with a deflection angle 90°31'24" right-East parallel with the North line of said Northeast Quarter 329.80 feet; thence with a deflection angle 90°31'24" left-North parallel with the West line of said Northeast Quarter 600.30 feet; thence with a deflection angle 90°31'24" right-East parallel with the North line of said Northeast Quarter 88.10 feet; thence with a deflection angle 90°31'24" left-North parallel with the West line of said Northeast Quarter 94.00 feet; thence with a deflection angle 90°31'24" right-East parallel with the North line of said Northeast Quarter 125.00 feet; thence with a deflection angle 64°34'07" left-Northeast 525.50 feet to the North line of said Northeast Quarter 1513.36 feet to the point of beginning containing 129.150 Acres in McPherson County, Kansas subject to any easements and/or rights-of-way of record.



DATE OF FIELD WORK: August 12, 1997

SURVEYOR'S CERTIFICATE:

I hereby certify this plat to be a true, correct and complete representation of the property described above as surveyed under my supervision.

Dated: January 27, 1998