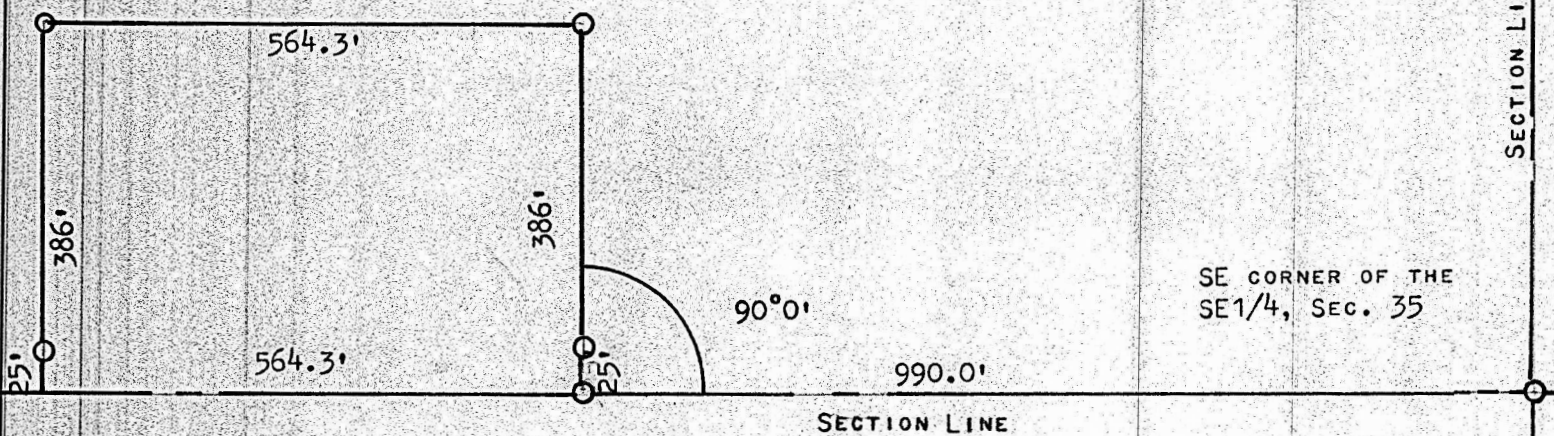


SECTION LINE



STATE OF KANSAS)
COUNTY OF MCPHERSON) SS

BEGINNING AT A POINT 990.0 FEET WEST OF THE SE CORNER OF SAID SE 1/4, SECTION 35, T19S R4W; THENCE RIGHT ANGLE NORTH 386.0 FEET; THENCE WEST 564.3 FEET; THENCE SOUTH TO SECTION LINE 386.0 FEET; THENCE EAST ON SECTION LINE 564.3 FEET TO PLACE OF BEGINNING, SAID TRACT OF LAND CONTAINS 5.0 ACRES MORE OR LESS, AND THAT THE ACCOMPANYING PLAT IS A TRUE EXHIBIT OF SAID SURVEY AS FAR AS IT IS KNOWN TO ME.

SIGNED THIS 16 DAY OF OCTOBER, 1972

A circular professional engineer seal for F. R. Rankin. The outer ring contains the text "F. R. RANKIN" at the top and "PROFESSIONAL ENGINEER" at the bottom. Inside this ring, the word "LICENSED" is at the top and "KANSAS" is at the bottom. In the center of the seal is the license number "799". The seal has a decorative rope-like border.