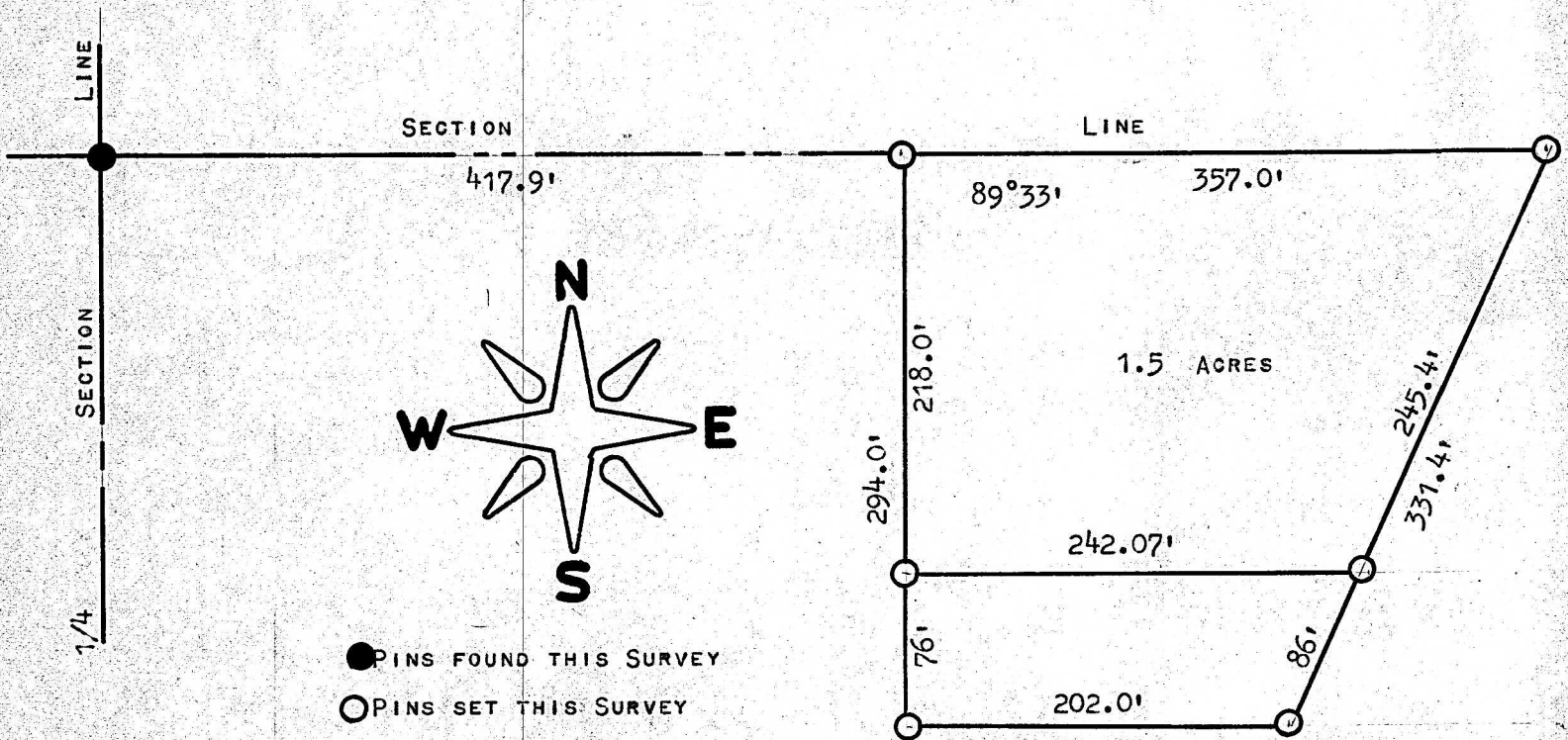


A SURVEY OF A TRACT OF LAND IN
THE NE1/4 OF SECTION 35, T19S - R4W



STATE OF KANSAS)
COUNTY OF MCPHERSON)
SS

I, FRANCIS RANKIN, COUNTY ENGINEER OF MCPHERSON CO., KANSAS, DO HEREBY CERTIFY
THAT UNDER MY SUPERVISION A SURVEY WAS MADE OF A TRACT OF LAND IN THE NE1/4 OF
SECTION 35, T19S - R4W OF THE 6TH P.M., AND DESCRIBED AS FOLLOWS:

COMMENCING AT THE NW CORNER OF SAID NE1/4; THENCE EAST, ON SECTION LINE,
417.9 FEET TO A PLACE OF BEGINNING; THENCE SOUTH, PARALLEL WITH THE 1/4
SECTION LINE, 218.0 FEET; THENCE EAST, PARALLEL WITH SECTION LINE, 242.07
FEET; THENCE NORTHEASTERLY, TO SECTION LINE, 245.4 FEET; THENCE WEST, ON
SECTION LINE, 357.0 FEET TO THE PLACE OF BEGINNING.

SAID TRACT CONTAINS 1.5 ACRES MORE OR LESS AND THE ABOVE PLAT IS A TRUE EXHIBIT OF
SAID SURVEY AS FAR AS IT IS KNOWN TO ME.

SURVEY CALLED FOR BY DUANE KAUFMAN.

SIGNED ON THIS 17 DAY OF JULY, 1973.

F. R. Rankin
F. R. RANKIN
COUNTY ENGINEER
MCPHERSON CO., KANSAS

