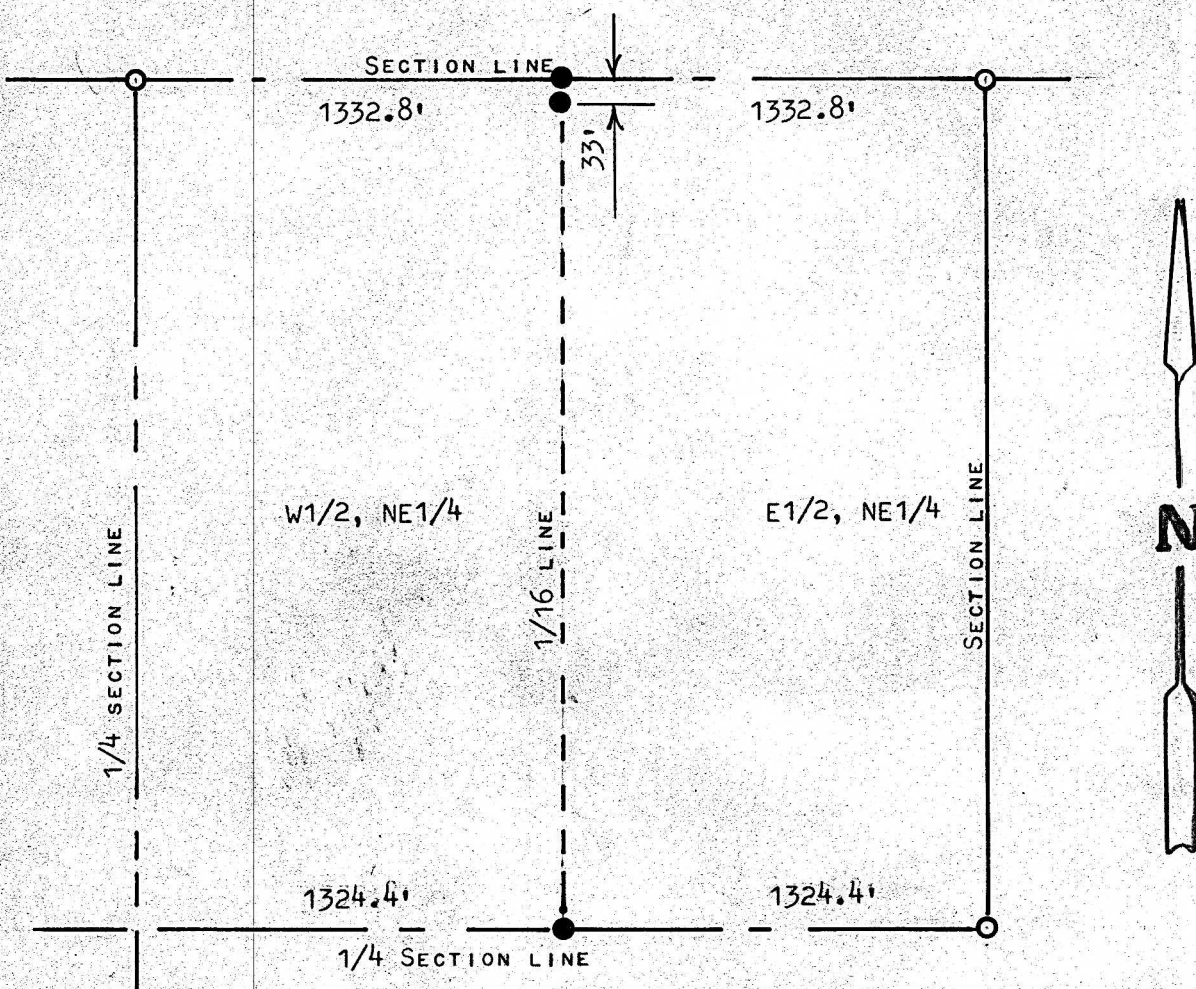


A SURVEY OF THE W1/2 & E1/2, OF THE NE1/4, SEC. 35
T19S, R4W, MCPHERSON COUNTY, KANSAS



○ PINS FOUND THIS SURVEY

● PINS SET THIS SURVEY

STATE OF KANSAS)
COUNTY OF MCPHERSON) SS

I, MELVIN FERGUSON, PROFESSIONAL ENGINEER OF THE STATE OF KANSAS
DO HEREBY CERTIFY THAT UNDER MY SUPERVISION A SURVEY WAS MADE
OF A LINE BETWEEN THE W1/2 AND THE E1/2, OF THE NE1/4, OF SECTION
35, T19S, R4W OF THE 6TH P.M. AND THE ABOVE PLAT IS A TRUE
EXHIBIT OF SAID SURVEY AS FAR AS IT IS KNOWN TO ME.

SURVEY CALLED FOR BY DUANE KAUFMAN

SIGNED THIS 22nd DAY OF AUGUST, 1976

Melvin Ferguson
MELVIN FERGUSON
PROFESSIONAL ENGINEER
MCPHERSON, KANSAS



MICROFILM