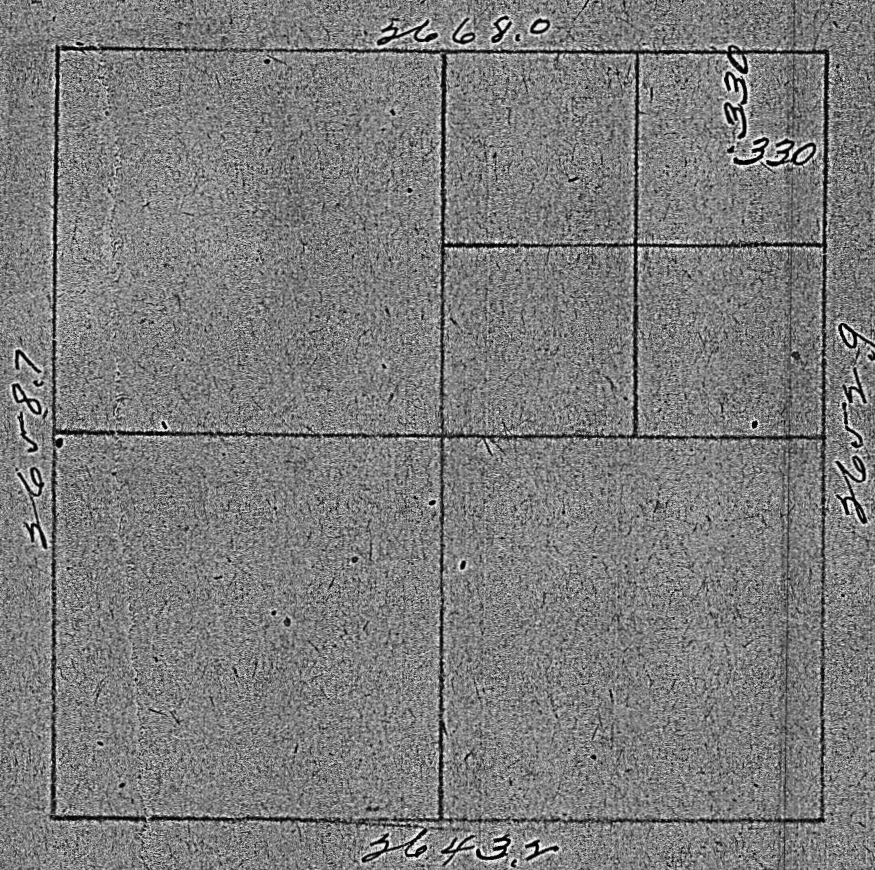


368

NE  $\frac{1}{4}$  Sec 35-19-4.



The above is a plat of a survey made by me for the Falcon-Seaboard Oil Co., 2-8-43, to make a location in the NE  $\frac{1}{4}$  of Sec 35-19-4 as shown and known as the Krehbiel, #1.

Guy Hall, County Engineer.

