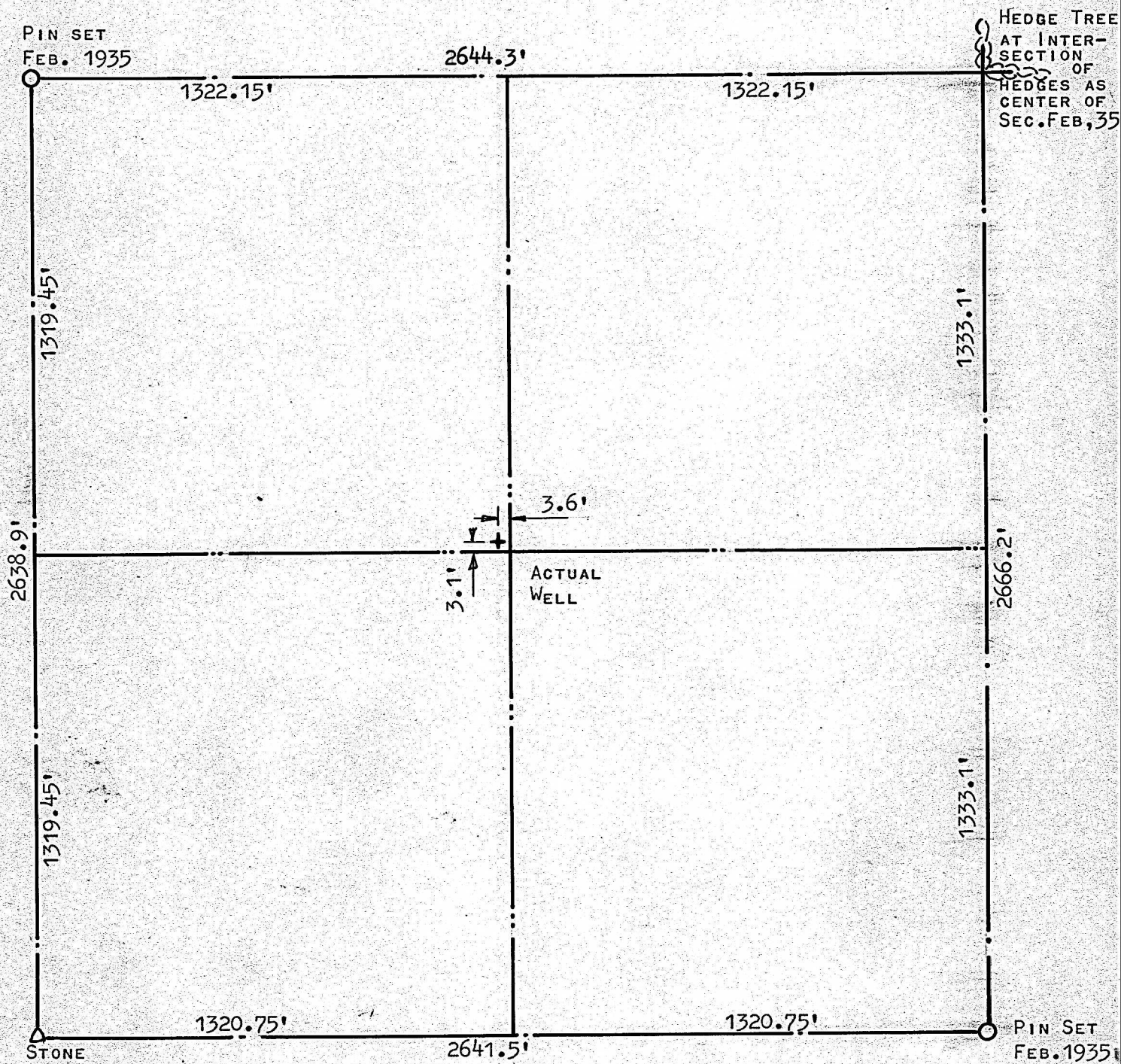


A SURVEY OF THE SW 1/4
SECTION 35 -T19S- R3W



STATE OF KANSAS) SS
COUNTY OF McPHERSON)

I, FRANCIS D. WAGNER, COUNTY ENGINEER OF McPHERSON COUNTY DO HEREBY CERTIFY THAT I DID CAUSE TO BE DONE ON THE 3RD DAY OF MARCH, 1959 A SURVEY OF THE SW QUARTER OF SECTION 35 TOWNSHIP 19 SOUTH, RANGE 3 WEST OF THE 6TH P.M. AND THAT THE ACCOMPANYING PLAT IS A TRUE EXHIBIT OF SAID SURVEY.

Francis D. Wagner

FRANCIS D. WAGNER
COUNTY ENGINEER
McPHERSON COUNTY

3 MARCH, 1959

MICROFILM