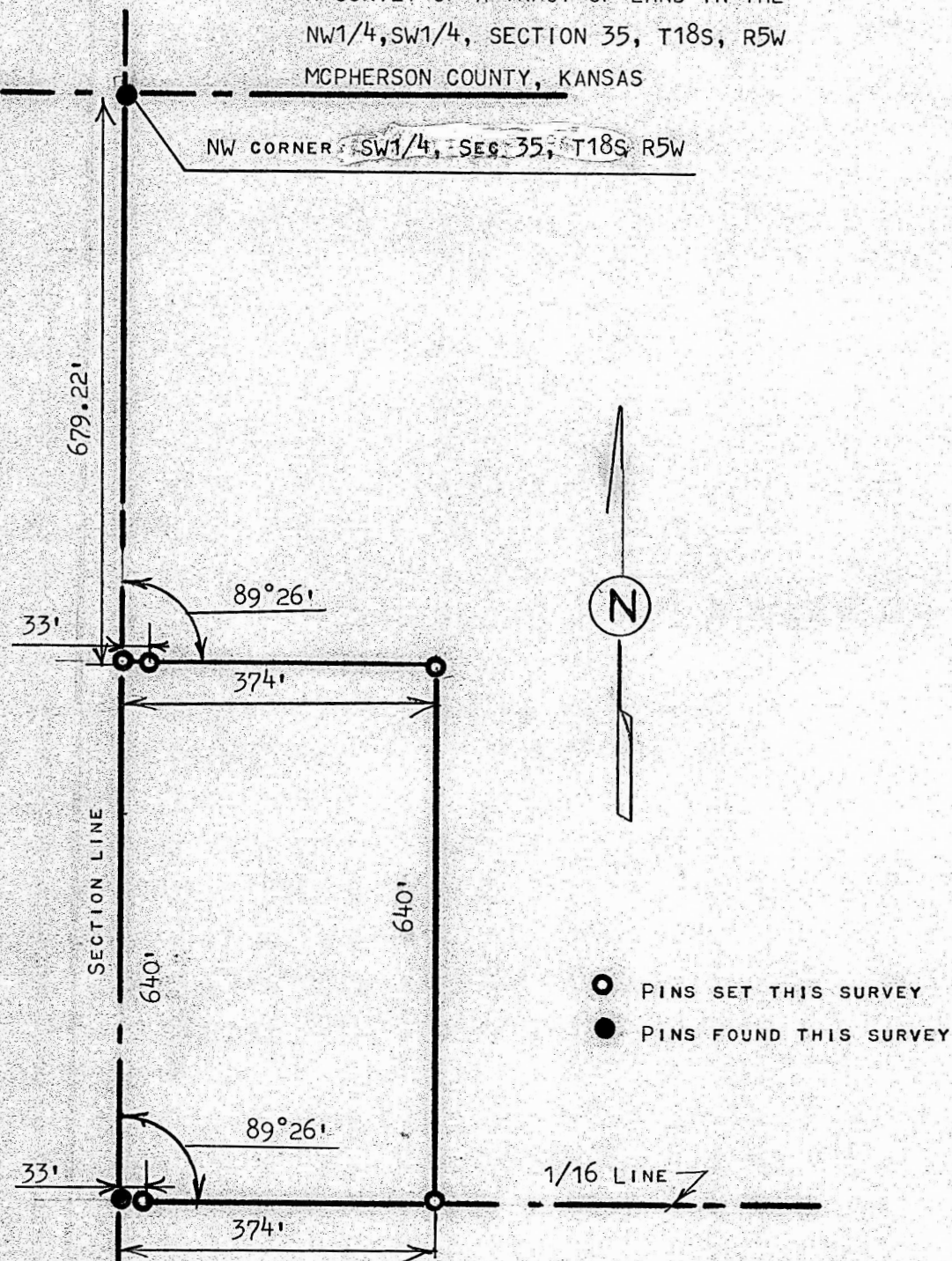


A SURVEY OF A TRACT OF LAND IN THE
NW1/4, SW1/4, SECTION 35, T18S, R5W
MCPHERSON COUNTY, KANSAS



STATE OF KANSAS)
COUNTY OF MCPHERSON) SS

I, MELVIN FERGUSON, PROFESSIONAL ENGINEER OF THE STATE OF KANSAS
DO HEREBY CERTIFY THAT UNDER MY SUPERVISION A SURVEY WAS MADE IN THE
NW1/4, SW1/4, SECTION 35, T18S R5W OF THE 6TH P.M. AND DESCRIBED
AS FOLLOWS;

BEGINNING 679.22 FEET SOUTH OF THE NW CORNER OF SAID SW1/4, SECTION
35, T18S, R5W; THENCE EAST PARALLEL WITH 1/16 LINE A DISTANCE OF
374 FEET; THENCE SOUTH PARALLEL WITH SECTION LINE A DISTANCE OF
640 FEET; AND TO THE 1/16 LINE; THENCE WEST ON 1/16 LINE 374 FEET;
THENCE NORTH ON SECTION LINE 640 FEET AND TO PLACE OF BEGINNING,
SAID TRACT OF LAND CONTAINS 5.5 ACRES MORE OR LESS, AND THAT THE
ACCOMPANYING PLAT IS A TRUE EXHIBIT OF SAID SURVEY AS FAR AS IT IS
KNOWN TO ME.

SURVEY CALLED FOR BY TED HAWKINSON

Melvin Ferguson
MELVIN FERGUSON
PROFESSIONAL ENGINEER
MCPHERSON, KANSAS

