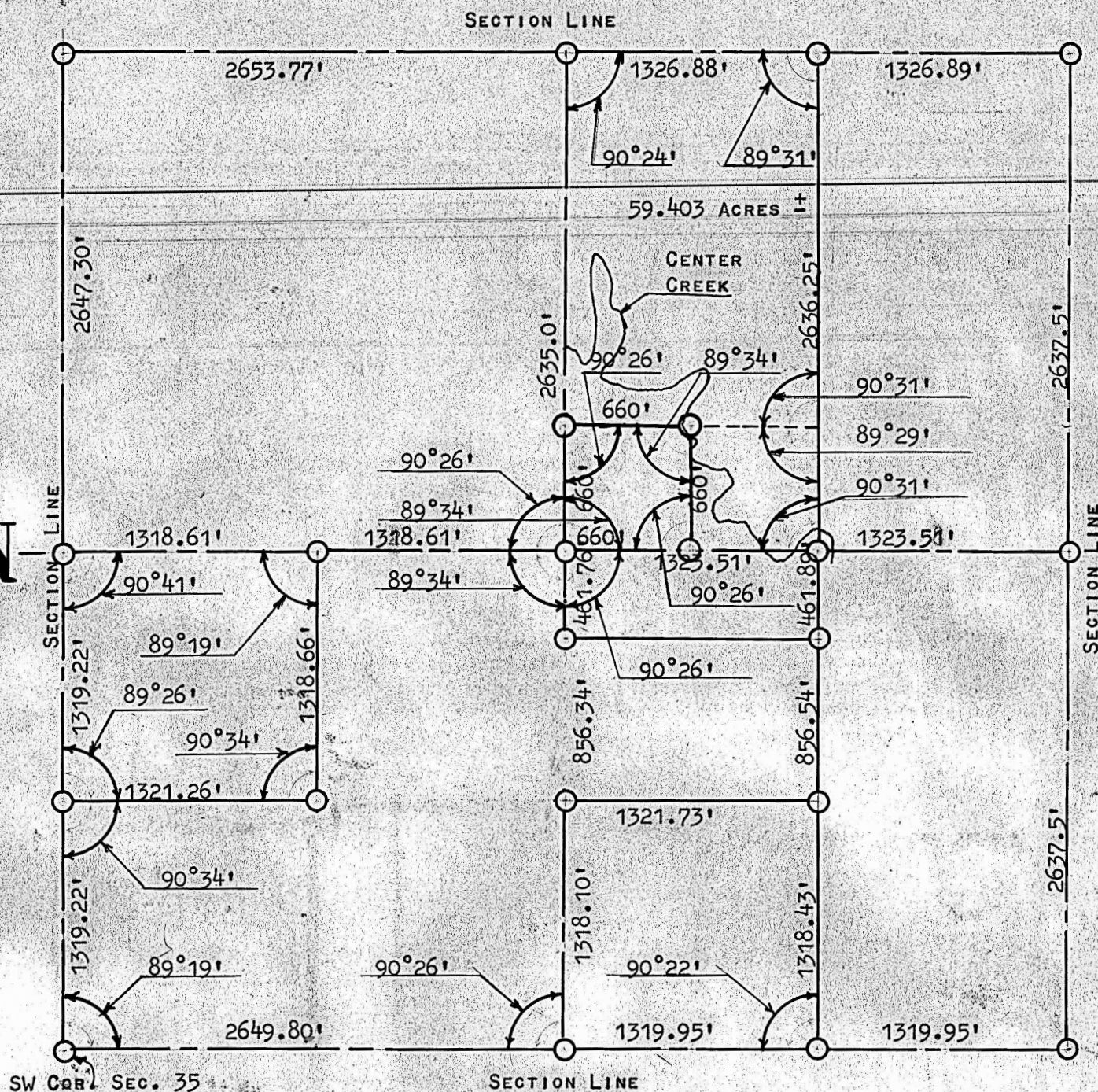


A SURVEY IN SECTION 35, T18S, R5W



○ PINS SET THIS SURVEY

STATE OF KANSAS)
COUNTY OF McPHERSON) SS

I, FRANCIS RANKIN, COUNTY ENGINEER OF McPHERSON COUNTY, KANSAS, DO HEREBY CERTIFY THAT I DID CAUSE TO BE DONE ON THE 15TH DAY OF MARCH, 1962, A SURVEY OF THE S¹/₂, SW¹/₄; THE NE¹/₄, SW¹/₄; SOUTH 26 ACRES OF THE NW¹/₄, SE¹/₄; AND W¹/₂, NE¹/₄ AND THE SW¹/₄, SW¹/₄, NE¹/₄ IN SECTION 35, T18S, R5W OF THE 6TH P.M. AND THAT THE ACCOMPANYING PLAT IS A TRUE EXHIBIT OF SAID SURVEY, AS FAR AS IT IS KNOWN TO ME.

APRIL 5, 1962

FRANCIS RANKIN
COUNTY ENGINEER
McPHERSON COUNTY



MICROFILM