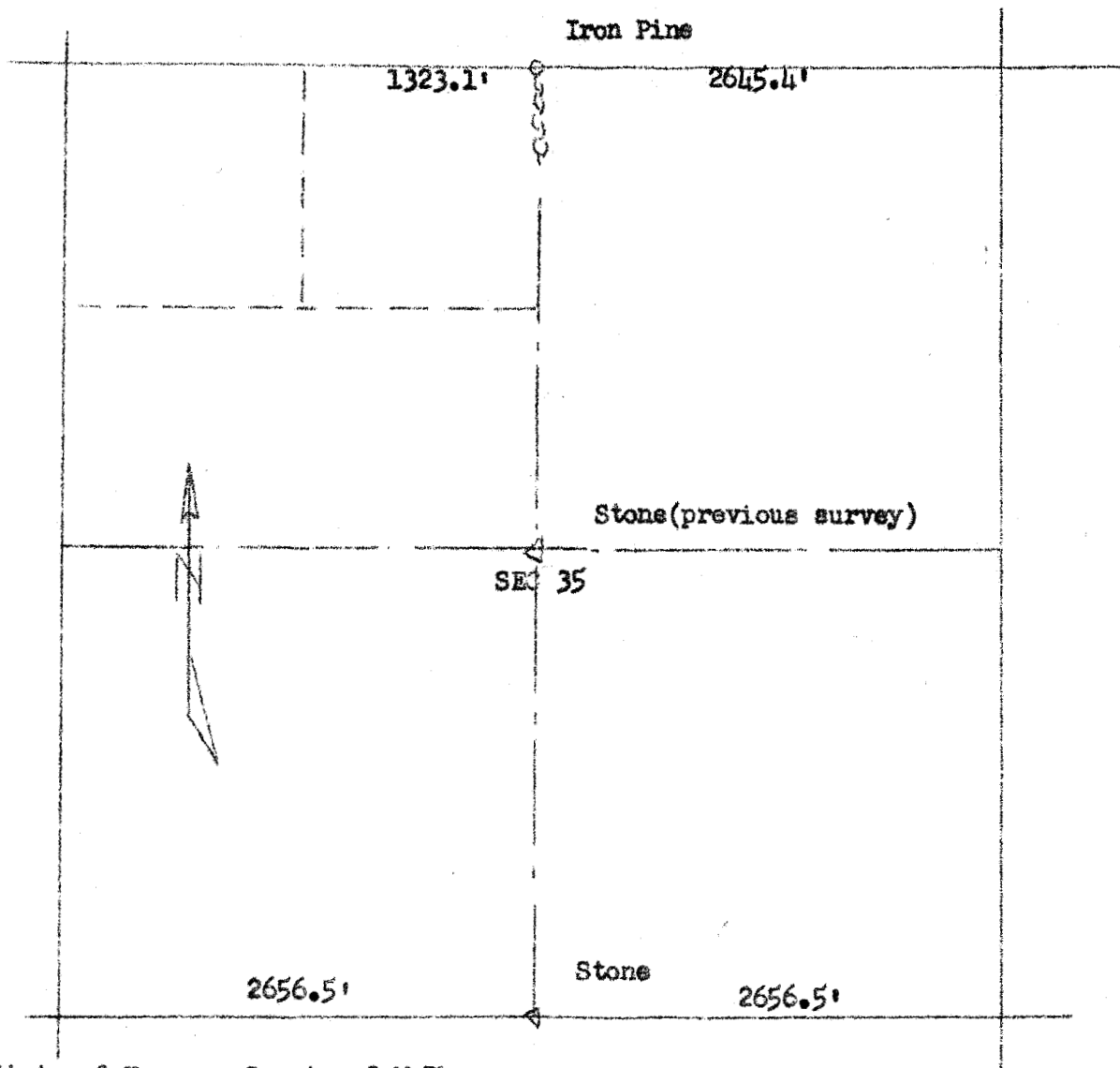


OFFICE OF COUNTY ENGINEER

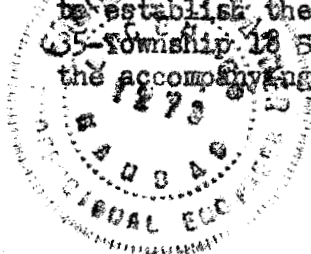
McPherson County  
McPherson, Kans

Survey to establish quarter section line between NW 1/4 and NE 1/4 Sec 35-18-2



State of Kansas, County of McPherson, ss:

I, Francis D Wagner, County Engineer of McPherson County Kansas, do hereby certify that I did cause to be done on the 9th day of February 1952, a survey to establish the quarter section line between the NW 1/4 and the NE 1/4 Sec 35-Township 18 South- Range 2 West of the Sixth Principal Meridian and that the accompanying plat is a true and correct exhibit of said survey.



*Francis D Wagner*

Francis D Wagner  
County Engineer

MICROFILM